

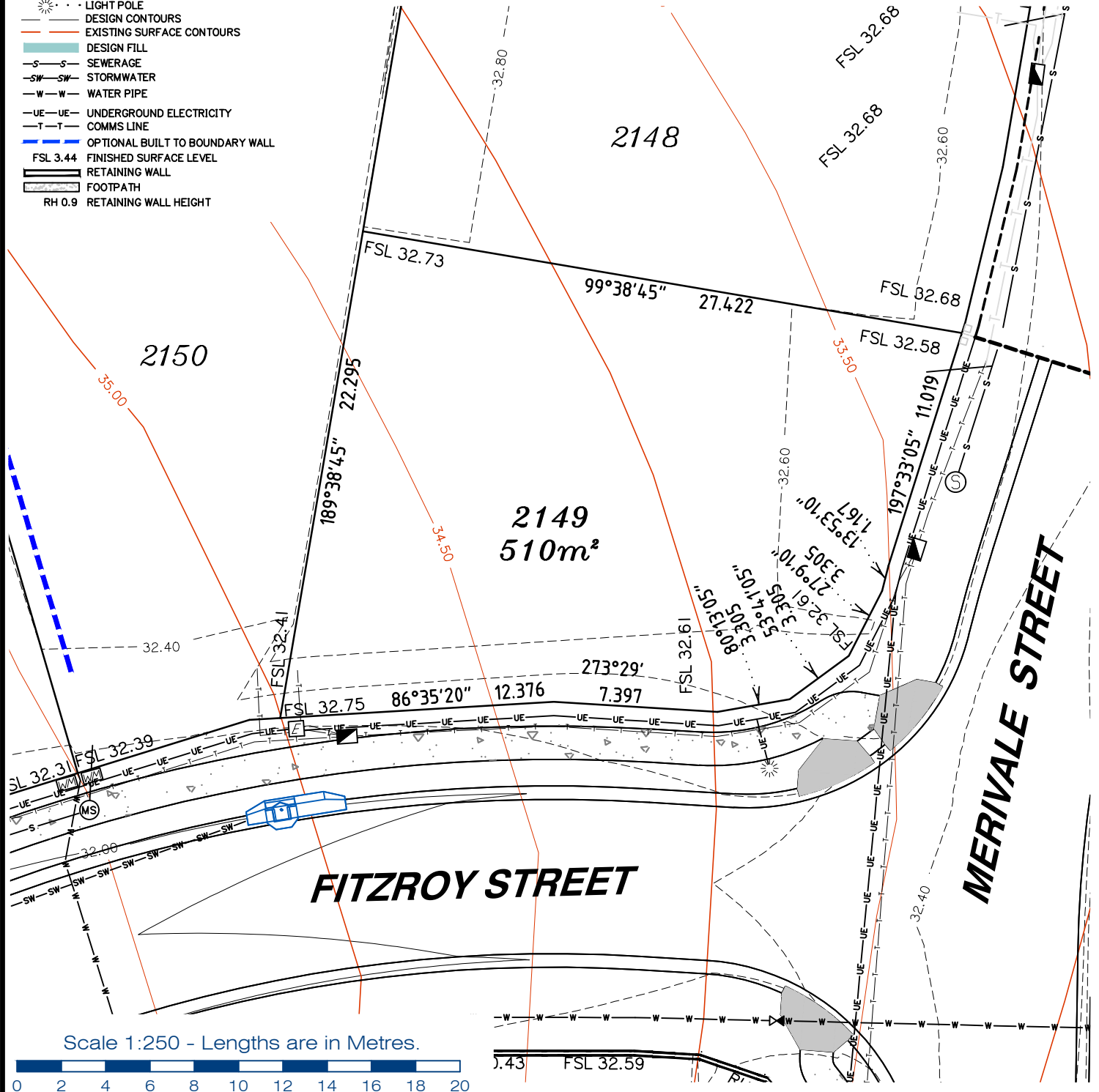


LEGEND

- . . SEWER MANHOLE
- . . SEWER MAINTENANCE SHAFT
- . . SEWER RODDING END
- . . STORMWATER MANHOLE
- . . GULLY TRAP
- . . WATER METER
- . . FIRE HYDRANT
- . . STOP VALVE
- . . ELECTRICITY PILLAR
- . . COMMS PIT
- . . RING MAIN UNIT
- . . LIGHT POLE
- . . DESIGN CONTOURS
- . . EXISTING SURFACE CONTOURS
- . . DESIGN FILL
- . . SEWERAGE
- . . STORMWATER
- . . WATER PIPE
- . . UNDERGROUND ELECTRICITY
- . . COMMS LINE
- . . OPTIONAL BUILT TO BOUNDARY WALL
- FSL 3.44 FINISHED SURFACE LEVEL
- . . RETAINING WALL
- . . FOOTPATH
- RH 0.9 RETAINING WALL HEIGHT

Notes:

- Final areas are subject to design changes, Council approval and field survey and may differ from those shown on this Disclosure Plan.
- Final presentation of areas will comply with requirements of the Registrar of Titles and may vary from the format on this Disclosure Plan
- "The Seller is entitled to make a Permitted Variation (as defined in Special Condition 3 of the contract) to the lot including its location, area, size, dimensions and elevation".
- Design contours are approximate only and may change during construction
- Services have been plotted from design information only and may change during construction
- All earthworks fill to lots has been placed and compacted on Level 1 basis in accordance with Australian Standard AS3798-2007 "Guidelines on earthworks for commercial and residential developments".



planning | environment | landscape | engineering | survey

T: 3807 3333 | F: 3287 5461 | www.gassman.com.au

LOGAN & Logan | 176 Business Street, Yatala QLD | PO Box 392, Beenleigh 4207

| | |
|---------|--|
| Client | AVJENNINGS Pty Ltd |
| Project | DISCLOSURE PLAN LOT 2149 (Survey plan: SP280869) RIVERTON Cusack Lane, Jimboomba |

| | | | |
|------------------------|--------------------|------------------|-------------------------------|
| Locality | JIMBOOMBA | Issue Date | 20/09/2021 |
| Local Govt | LOGAN CITY COUNCIL | Meridian | SP280865 |
| Scale (on A4 original) | 1:250 | Level Datum | AHD |
| | | Contour Interval | 0.2 m Design 0.5m Existing |
| | | Drawn | S.Chowdhury |
| | | Date Drafted | 20/08/2021 |
| | | Checked | A.Geraghty |

Real Property Description:
Lot 701 on SP280865

REFERENCE No. **5544-2C**
PLAN No. **5544 S DC LOT 2149**

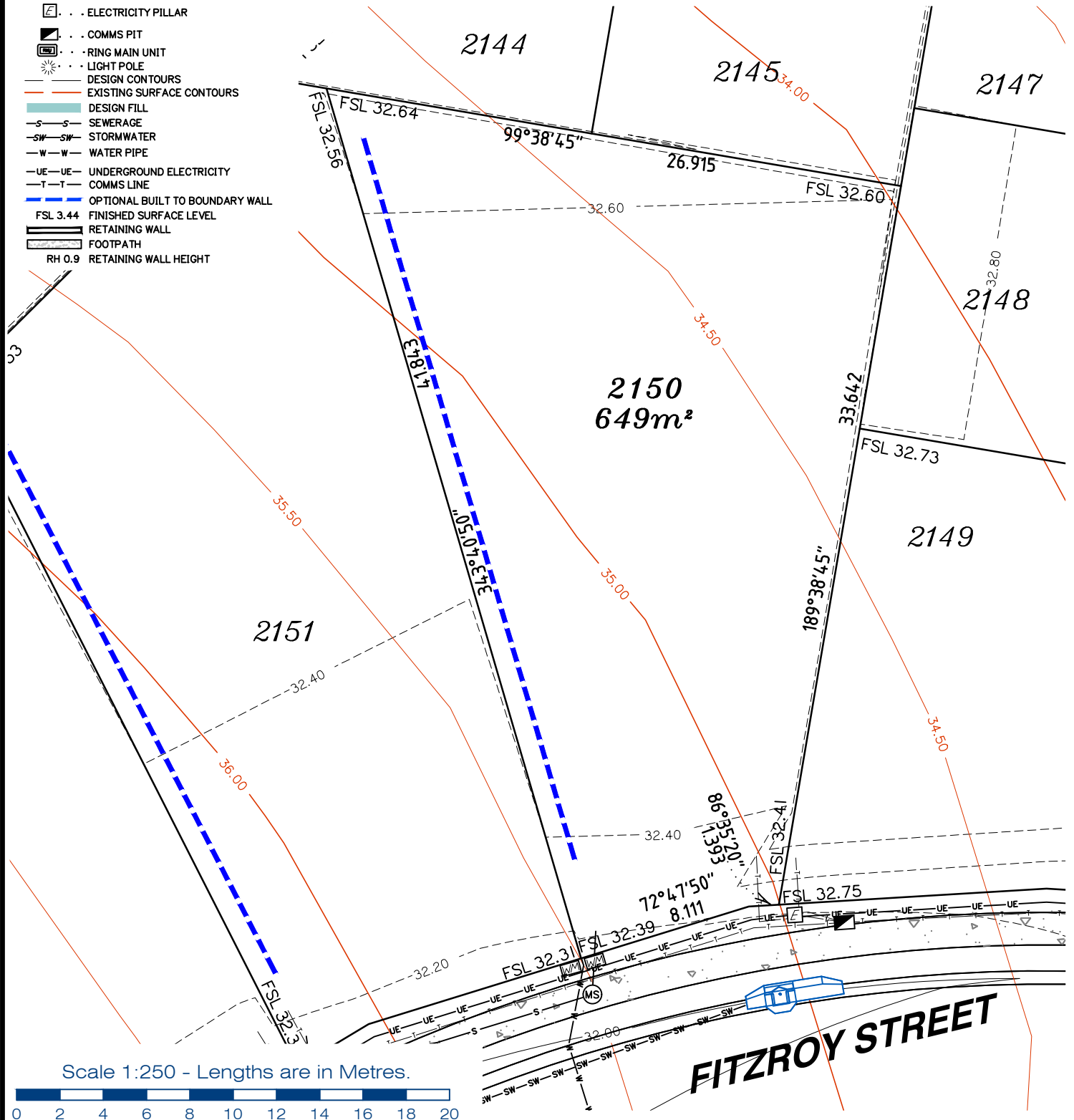


LEGEND

- . SEWER MANHOLE
- . SEWER MAINTENANCE SHAFT
- . SEWER RODDING END
- . STORMWATER MANHOLE
- . GULLY TRAP
- . WATER METER
- . FIRE HYDRANT
- . STOP VALVE
- . ELECTRICITY PILLAR
- . COMMS PIT
- . RING MAIN UNIT
- . LIGHT POLE
- DESIGN CONTOURS
- EXISTING SURFACE CONTOURS
- DESIGN FILL
- S-S SEWERAGE
- SW-SW STORMWATER
- W-W WATER PIPE
- UE-UE UNDERGROUND ELECTRICITY
- T-T COMMS LINE
- OPTIONAL BUILT TO BOUNDARY WALL
- FSL 3.44 FINISHED SURFACE LEVEL
- RETAINING WALL
- FOOTPATH
- RH 0.9 RETAINING WALL HEIGHT

Notes:

- Final areas are subject to design changes, Council approval and field survey and may differ from those shown on this Disclosure Plan.
- Final presentation of areas will comply with requirements of the Registrar of Titles and may vary from the format on this Disclosure Plan
- "The Seller is entitled to make a Permitted Variation (as defined in Special Condition 3 of the contract) to the lot including its location, area, size, dimensions and elevation".
- Design contours are approximate only and may change during construction
- Services have been plotted from design information only and may change during construction
- All earthworks fill to lots has been placed and compacted on Level 1 basis in accordance with Australian Standard AS3798-2007 "Guidelines on earthworks for commercial and residential developments".



Scale 1:250 - Lengths are in Metres.



gassman
development
perspectives

planning | environment | landscape | engineering | survey

T: 3807 3333 | F: 3287 5461 | www.gassman.com.au

LOGAN & Logan | 76 Business Street, Yatala QLD | PO Box 392, Beenleigh 4207

Client

AVJENNINGS Pty Ltd

Project

DISCLOSURE PLAN

LOT 2150

(Survey plan: SP280869)

RIVERTON

Cusack Lane, Jimboomba

Locality

JIMBOOMBA

Local Govt

LOGAN
CITY COUNCIL

Scale (on A4 original)

1:250

Issue Date

20/09/2021

Meridian

SP280865

Level Datum

AHD

Contour Interval

0.2 m Design
0.5m Existing

Drawn

S.Chowdhury

Date Drafted

20/08/2021

Checked

A.Geraghty

Real Property Description:

Lot 701 on SP280865

REFERENCE No.

5544-2C

PLAN No.

5544 S DC LOT 2150

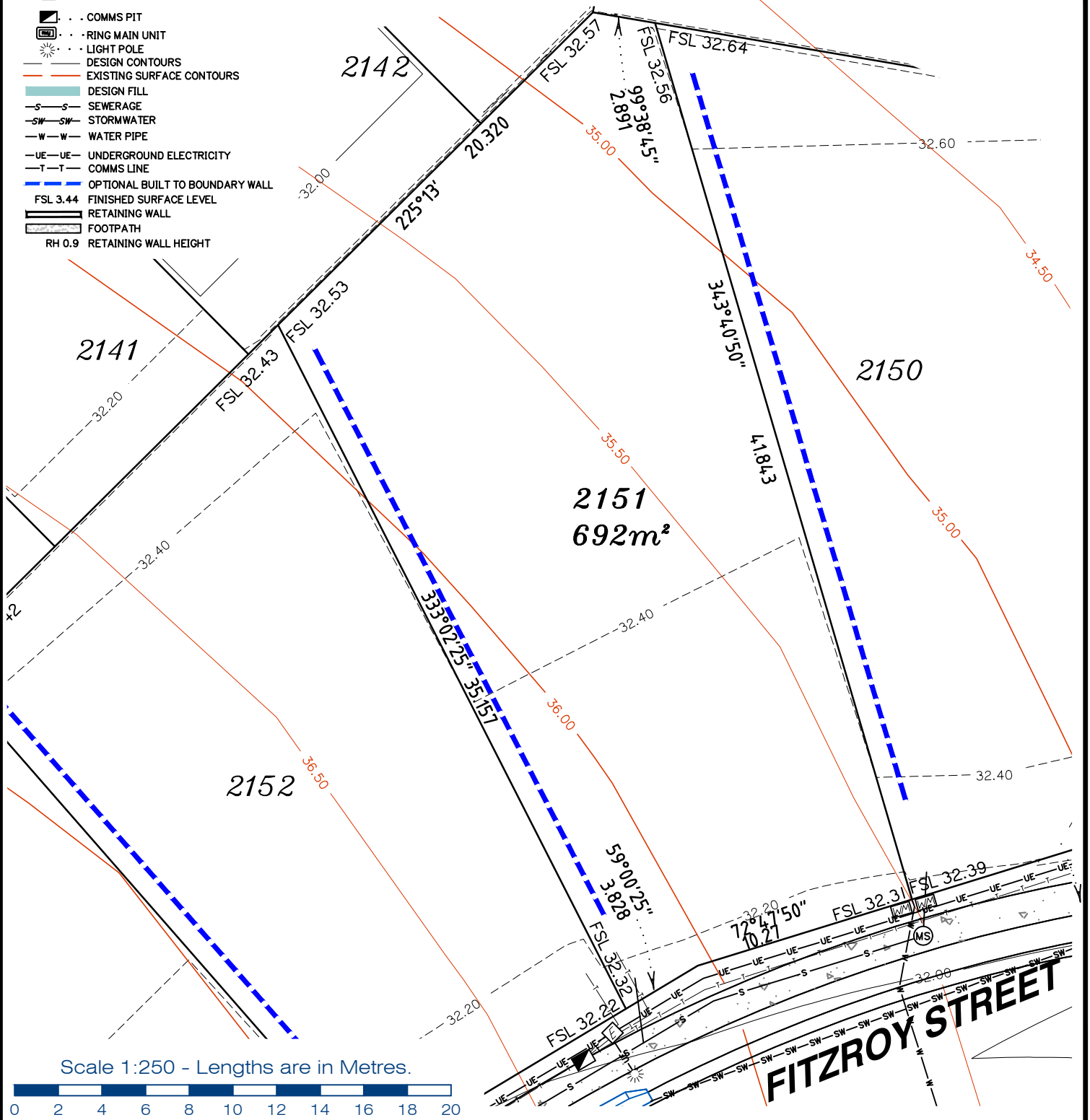


LEGEND

- . SEWER MANHOLE
- . SEWER MAINTENANCE SHAFT
- . SEWER RODDING END
- . STORMWATER MANHOLE
- . GULLY TRAP
- . WATER METER
- . FIRE HYDRANT
- . STOP VALVE
- . ELECTRICITY PILLAR
- . COMMS PIT
- . RING MAIN UNIT
- . LIGHT POLE
- . DESIGN CONTOURS
- . EXISTING SURFACE CONTOURS
- . DESIGN FILL
- . SEWERAGE
- . STORMWATER
- . WATER PIPE
- . UNDERGROUND ELECTRICITY
- . COMMS LINE
- . OPTIONAL BUILT TO BOUNDARY WALL
- . FINISHED SURFACE LEVEL
- . RETAINING WALL
- . FOOTPATH
- . RH 0.9 RETAINING WALL HEIGHT

Notes:

- Final areas are subject to design changes, Council approval and field survey and may differ from those shown on this Disclosure Plan.
- Final presentation of areas will comply with requirements of the Registrar of Titles and may vary from the format on this Disclosure Plan
- "The Seller is entitled to make a Permitted Variation (as defined in Special Condition 3 of the contract) to the lot including its location, area, size, dimensions and elevation".
- Design contours are approximate only and may change during construction
- Services have been plotted from design information only and may change during construction
- All earthworks fill to lots has been placed and compacted on Level 1 basis in accordance with Australian Standard AS3798-2007 "Guidelines on earthworks for commercial and residential developments".



Scale 1:250 - Lengths are in Metres.



gassman development perspectives
 est 1985
 planning | environment | landscape | engineering | survey
 T: 3807 3333 | F: 3287 5461 | www.gassman.com.au
 LOGAN & Logan | 176 Business Street, Yatala QLD | PO Box 392, Beenleigh 4207

| | |
|---------|--|
| Client | AVJENNINGS Pty Ltd |
| Project | DISCLOSURE PLAN LOT 2151 (Survey plan: SP280869) RIVERTON Cusack Lane, Jimboomba |

| | | | |
|------------------------|--------------------|------------------|-------------------------------|
| Locality | JIMBOOMBA | Issue Date | 20/09/2021 |
| Local Govt | LOGAN CITY COUNCIL | Meridian | SP280865 |
| Scale (on A4 original) | 1:250 | Level Datum | AHD |
| | | Contour Interval | 0.2 m Design 0.5m Existing |
| | | Drawn | S.Chowdhury |
| | | Date Drafted | 20/08/2021 |
| | | Checked | A.Geraghty |

Real Property Description:
Lot 701 on SP280865

REFERENCE No. 5544-2C
PLAN No. 5544 S DC LOT 2151

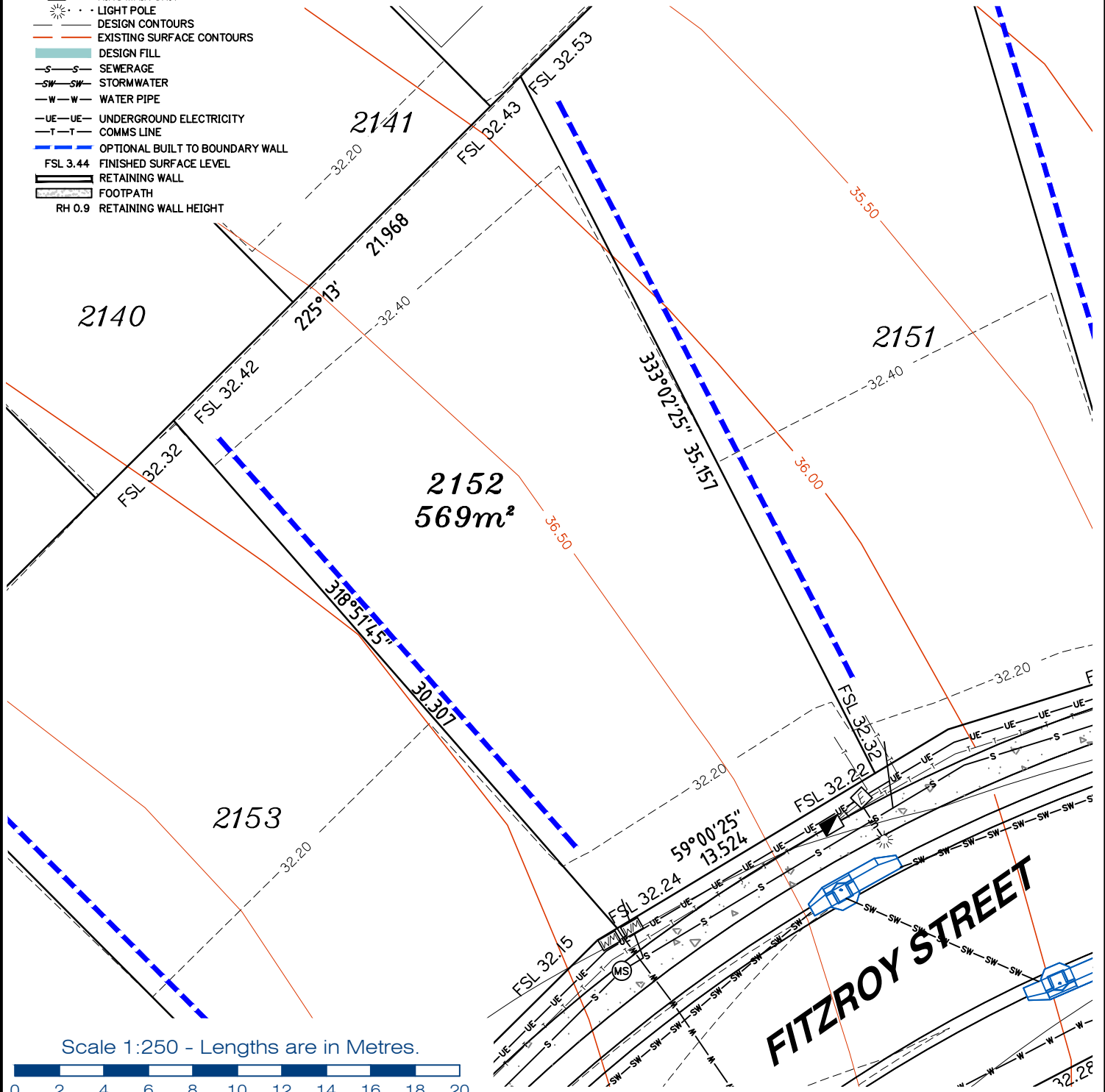


LEGEND

- . . SEWER MANHOLE
- . . SEWER MAINTENANCE SHAFT
- . . SEWER RODDING END
- . . STORMWATER MANHOLE
- . . GULLY TRAP
- . . WATER METER
- . . FIRE HYDRANT
- . . STOP VALVE
- . . ELECTRICITY PILLAR
- . . COMMS PIT
- . . RING MAIN UNIT
- . . LIGHT POLE
- . . DESIGN CONTOURS
- . . EXISTING SURFACE CONTOURS
- . . DESIGN FILL
- . . SEWERAGE
- . . STORMWATER
- . . WATER PIPE
- . . UNDERGROUND ELECTRICITY
- . . COMMS LINE
- . . OPTIONAL BUILT TO BOUNDARY WALL
- . . FINISHED SURFACE LEVEL
- . . RETAINING WALL
- . . FOOTPATH
- . . RH 0.9 RETAINING WALL HEIGHT

Notes:

- Final areas are subject to design changes, Council approval and field survey and may differ from those shown on this Disclosure Plan.
- Final presentation of areas will comply with requirements of the Registrar of Titles and may vary from the format on this Disclosure Plan
- "The Seller is entitled to make a Permitted Variation (as defined in Special Condition 3 of the contract) to the lot including its location, area, size, dimensions and elevation".
- Design contours are approximate only and may change during construction
- Services have been plotted from design information only and may change during construction
- All earthworks fill to lots has been placed and compacted on Level 1 basis in accordance with Australian Standard AS3798-2007 "Guidelines on earthworks for commercial and residential developments".



Scale 1:250 - Lengths are in Metres.



gassman development perspectives
est 1985

planning | environment | landscape | engineering | survey

T: 3807 3333 | F: 3287 5461 | www.gassman.com.au

LOGAN & Logan | 76 Business Street, Yatala QLD | PO Box 392, Beenleigh 4207

| | |
|---------|--|
| Client | AVJENNINGS Pty Ltd |
| Project | DISCLOSURE PLAN LOT 2152 (Survey plan: SP280869) RIVERTON Cusack Lane, Jimboomba |

| | | | |
|------------------------|--------------------|------------------|-------------------------------|
| Locality | JIMBOOMBA | Issue Date | 20/09/2021 |
| Local Govt | LOGAN CITY COUNCIL | Meridian | SP280865 |
| Scale (on A4 original) | 1:250 | Level Datum | AHD |
| | | Contour Interval | 0.2 m Design 0.5m Existing |
| | | Drawn | S.Chowdhury |
| | | Date Drafted | 20/08/2021 |
| | | Checked | A.Geraghty |

Real Property Description:
Lot 701 on SP280865

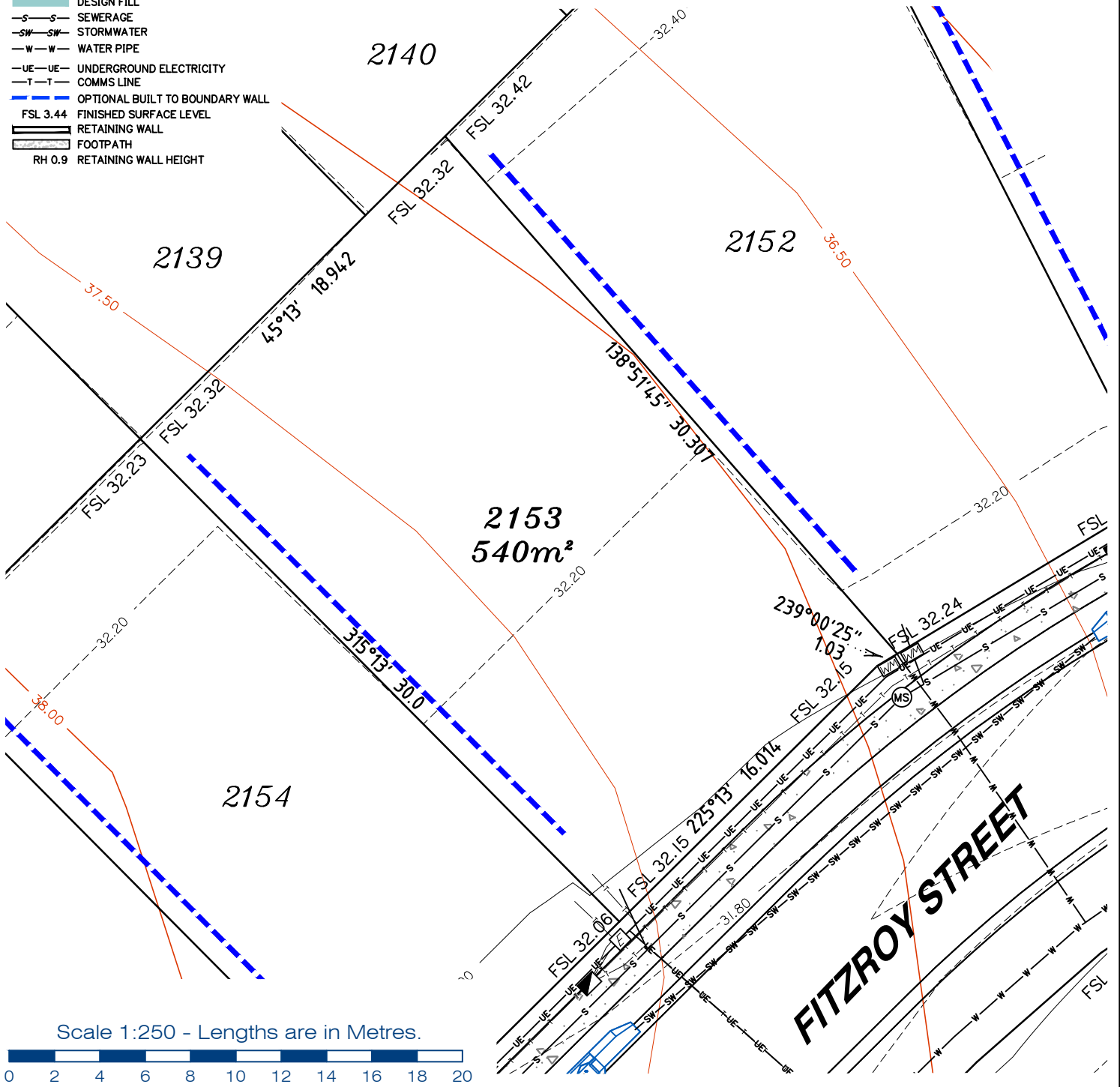
REFERENCE No. 5544-2C
PLAN No. 5544 S DC LOT 2152

LEGEND

- . . SEWER MANHOLE
- . . SEWER MAINTENANCE SHAFT
- . . SEWER RODDING END
- . . STORMWATER MANHOLE
- . . GULLY TRAP
- . . WATER METER
- . . FIRE HYDRANT
- . . STOP VALVE
- . . ELECTRICITY PILLAR
- . . COMMS PIT
- . . RING MAIN UNIT
- . . LIGHT POLE
- DESIGN CONTOURS
- EXISTING SURFACE CONTOURS
- DESIGN FILL
- S-S- SEWERAGE
- SW-SW- STORMWATER
- W-W- WATER PIPE
- UE-UE- UNDERGROUND ELECTRICITY
- T-T- COMMS LINE
- OPTIONAL BUILT TO BOUNDARY WALL
- FSL 3.44 FINISHED SURFACE LEVEL
- RETAINING WALL
- FOOTPATH
- RH 0.9 RETAINING WALL HEIGHT

Notes:

- Final areas are subject to design changes, Council approval and field survey and may differ from those shown on this Disclosure Plan.
- Final presentation of areas will comply with requirements of the Registrar of Titles and may vary from the format on this Disclosure Plan
- "The Seller is entitled to make a Permitted Variation (as defined in Special Condition 3 of the contract) to the lot including its location, area, size, dimensions and elevation".
- Design contours are approximate only and may change during construction
- Services have been plotted from design information only and may change during construction
- All earthworks fill to lots has been placed and compacted on Level 1 basis in accordance with Australian Standard AS3798-2007 "Guidelines on earthworks for commercial and residential developments".



Scale 1:250 - Lengths are in Metres.

gassman development perspectives
est 1985

planning | environment | landscape | engineering | survey

T: 3807 3333 | F: 3287 5461 | www.gassman.com.au

LOGAN & Logan | 176 Business Street, Yatala QLD | PO Box 392, Beenleigh 4207

| | |
|---------|--|
| Client | AVJENNINGS Pty Ltd |
| Project | DISCLOSURE PLAN LOT 2153 (Survey plan: SP280869) RIVERTON Cusack Lane, Jimboomba |

| | | | |
|------------------------|--------------------|------------------|-------------------------------|
| Locality | JIMBOOMBA | Issue Date | 20/09/2021 |
| Local Govt | LOGAN CITY COUNCIL | Meridian | SP280865 |
| Scale (on A4 original) | 1:250 | Level Datum | AHD |
| | | Contour Interval | 0.2 m Design 0.5m Existing |
| | | Drawn | S.Chowdhury |
| | | Date Drafted | 20/08/2021 |
| | | Checked | A.Geraghty |

Real Property Description:
Lot 701 on SP280865

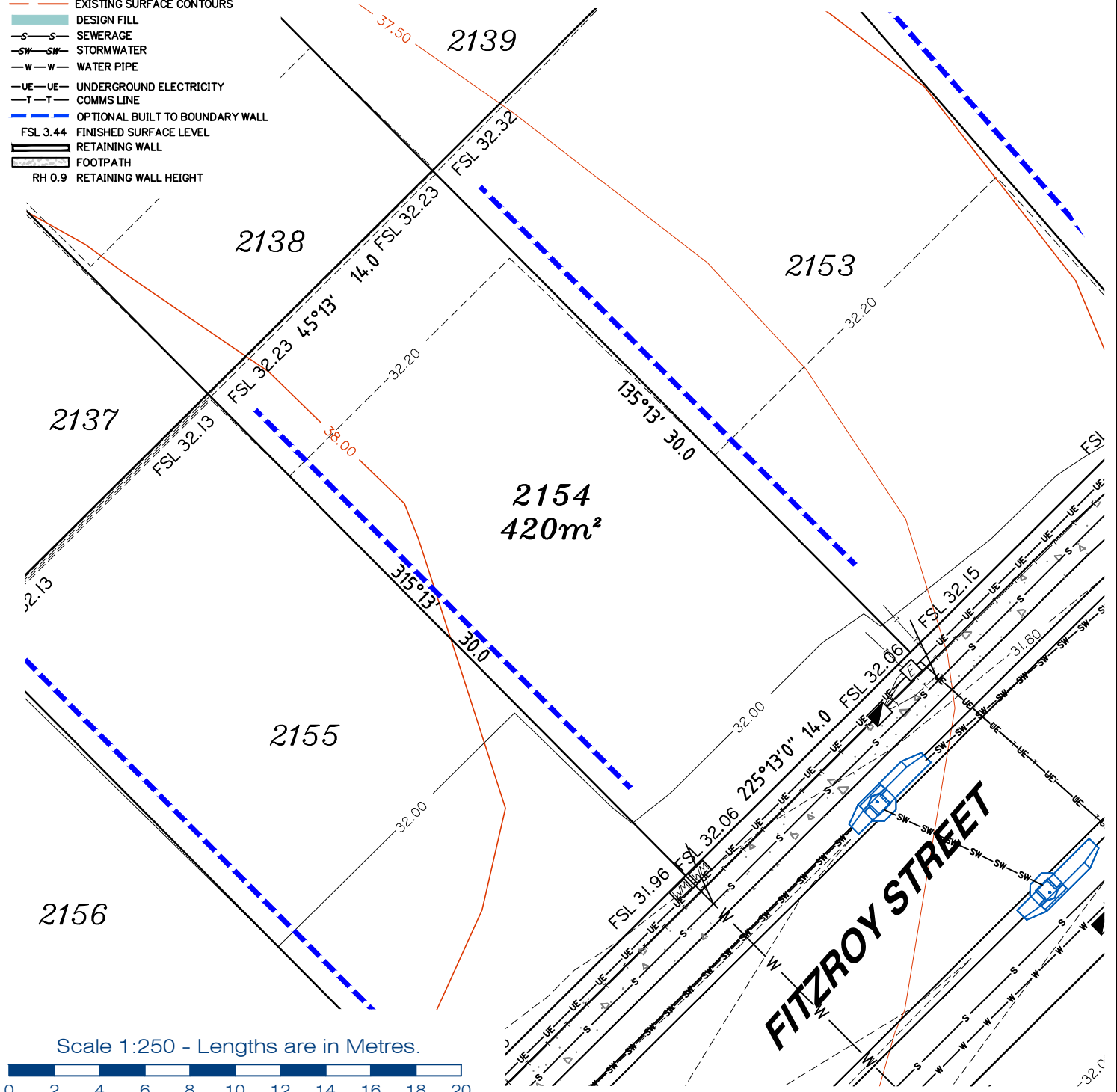
REFERENCE No. **5544-2C**
PLAN No. **5544 S DC LOT 2153**

LEGEND

- . . SEWER MANHOLE
- ⊗ . . SEWER MAINTENANCE SHAFT
- ⊙ . . SEWER RODDING END
- ⊕ . . STORMWATER MANHOLE
- ⊖ . . GULLY TRAP
- ⊗ . . WATER METER
- ⊕ . . FIRE HYDRANT
- ⊖ . . STOP VALVE
- ⊗ . . ELECTRICITY PILLAR
- ⊗ . . COMMS PIT
- ⊗ . . RING MAIN UNIT
- ⊗ . . LIGHT POLE
- . . DESIGN CONTOURS
- . . EXISTING SURFACE CONTOURS
- . . DESIGN FILL
- S—S— . . SEWERAGE
- SW—SW— . . STORMWATER
- W—W— . . WATER PIPE
- UE—UE— . . UNDERGROUND ELECTRICITY
- T—T— . . COMMS LINE
- . . OPTIONAL BUILT TO BOUNDARY WALL
- FSL 3.44 . . FINISHED SURFACE LEVEL
- . . RETAINING WALL
- . . FOOTPATH
- RH 0.9 . . RETAINING WALL HEIGHT

Notes:

- Final areas are subject to design changes, Council approval and field survey and may differ from those shown on this Disclosure Plan.
- Final presentation of areas will comply with requirements of the Registrar of Titles and may vary from the format on this Disclosure Plan
- "The Seller is entitled to make a Permitted Variation (as defined in Special Condition 3 of the contract) to the lot including its location, area, size, dimensions and elevation".
- Design contours are approximate only and may change during construction
- Services have been plotted from design information only and may change during construction
- All earthworks fill to lots has been placed and compacted on Level 1 basis in accordance with Australian Standard AS3798-2007 "Guidelines on earthworks for commercial and residential developments".



Scale 1:250 - Lengths are in Metres.



**gassman
development
perspectives**
est 1985

planning | environment | landscape | engineering | survey

T: 3807 3333 | F: 3287 5461 | www.gassman.com.au

LOGAN & Logan | 176 Business Street, Yatala QLD | PO Box 392, Beenleigh 4207

| | |
|---------|--|
| Client | AVJENNINGS Pty Ltd |
| Project | DISCLOSURE PLAN LOT 2154 (Survey plan: SP280869) RIVERTON Cusack Lane, Jimboomba |

| | | | |
|------------------------|--------------------|------------------|-------------------------------|
| Locality | JIMBOOMBA | Issue Date | 20/09/2021 |
| Local Govt | LOGAN CITY COUNCIL | Meridian | SP280865 |
| Scale (on A4 original) | 1:250 | Level Datum | AHD |
| | | Contour Interval | 0.2 m Design 0.5m Existing |
| | | Drawn | S.Chowdhury |
| | | Date Drafted | 20/08/2021 |
| | | Checked | A.Geraghty |

Real Property Description:
Lot 701 on SP280865

REFERENCE No. **5544-2C**
PLAN No. **5544 S DC LOT 2154**

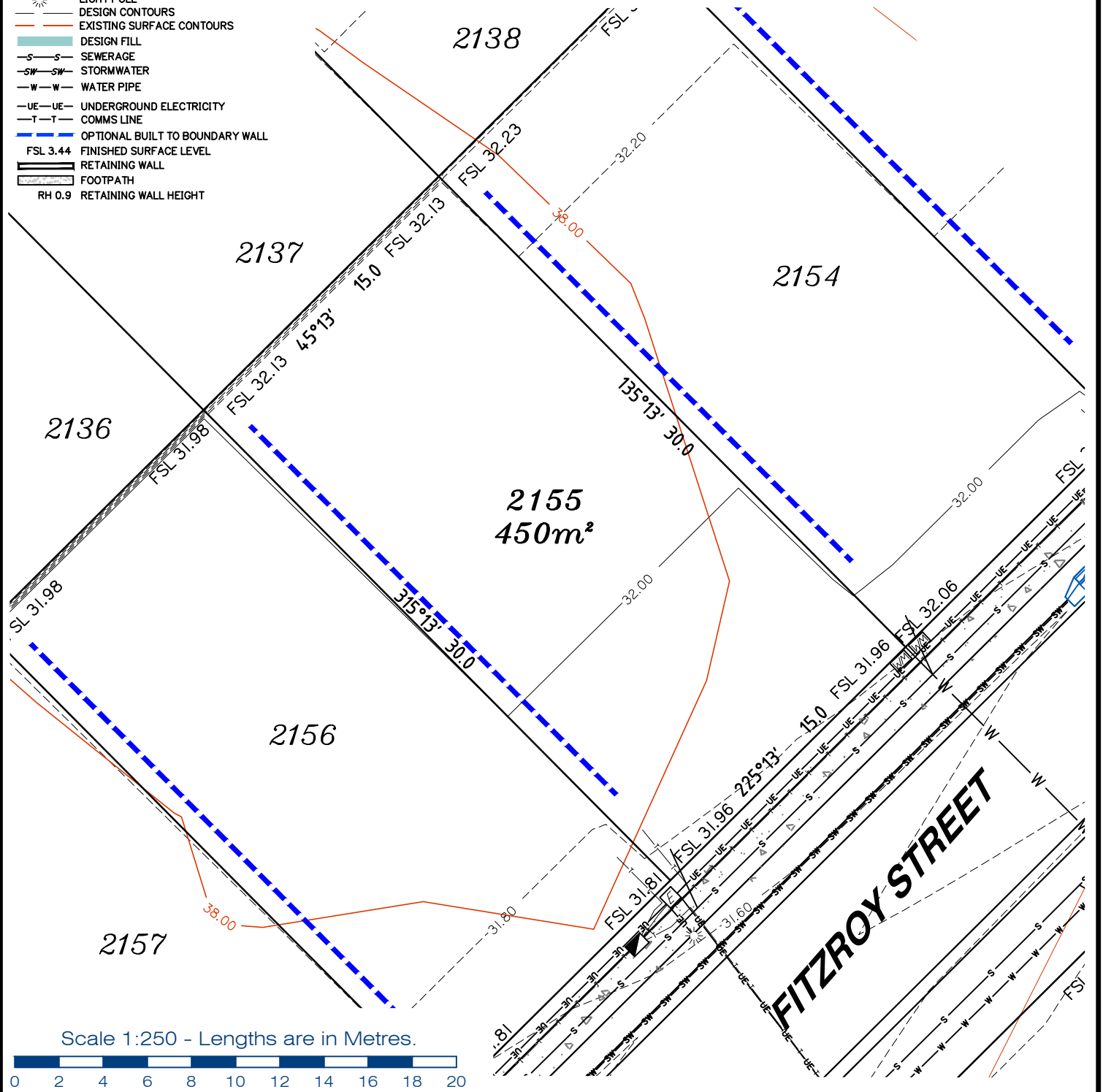


LEGEND

- . . SEWER MANHOLE
- . . SEWER MAINTENANCE SHAFT
- . . SEWER RODDING END
- . . STORMWATER MANHOLE
- . . GULLY TRAP
- . . WATER METER
- . . FIRE HYDRANT
- . . STOP VALVE
- . . ELECTRICITY PILLAR
- . . COMMS PIT
- . . RING MAIN UNIT
- . . LIGHT POLE
- DESIGN CONTOURS
- EXISTING SURFACE CONTOURS
- DESIGN FILL
- SEWERAGE
- STORMWATER
- WATER PIPE
- UNDERGROUND ELECTRICITY
- COMMS LINE
- OPTIONAL BUILT TO BOUNDARY WALL
- FSL 3.44 FINISHED SURFACE LEVEL
- RETAINING WALL
- FOOTPATH
- RH 0.9 RETAINING WALL HEIGHT

Notes:

- Final areas are subject to design changes, Council approval and field survey and may differ from those shown on this Disclosure Plan.
- Final presentation of areas will comply with requirements of the Registrar of Titles and may vary from the format on this Disclosure Plan
- "The Seller is entitled to make a Permitted Variation (as defined in Special Condition 3 of the contract) to the lot including its location, area, size, dimensions and elevation".
- Design contours are approximate only and may change during construction
- Services have been plotted from design information only and may change during construction
- All earthworks fill to lots has been placed and compacted on Level 1 basis in accordance with Australian Standard AS3798-2007 "Guidelines on earthworks for commercial and residential developments".



gassman development perspectives
est 1985

planning | environment | landscape | engineering | survey

T: 3807 3333 | F: 3287 5461 | www.gassman.com.au

LOGAN & Logan | 176 Business Street, Yatala QLD | PO Box 392, Beenleigh 4207

| | |
|---------|--|
| Client | AVJENNINGS Pty Ltd |
| Project | DISCLOSURE PLAN LOT 2155 (Survey plan: SP280869) RIVERTON Cusack Lane, Jimboomba |

| | | | |
|------------------------|--------------------|------------------|-------------------------------|
| Locality | JIMBOOMBA | Issue Date | 20/09/2021 |
| Local Govt | LOGAN CITY COUNCIL | Meridian | SP280865 |
| Scale (on A4 original) | 1:250 | Level Datum | AHD |
| | | Contour Interval | 0.2 m Design 0.5m Existing |
| | | Drawn | S.Chowdhury |
| | | Date Drafted | 20/08/2021 |
| | | Checked | A.Geraghty |

Real Property Description:
Lot 701 on SP280865

REFERENCE No. **5544-2C**
PLAN No. **5544 S DC LOT 2155**

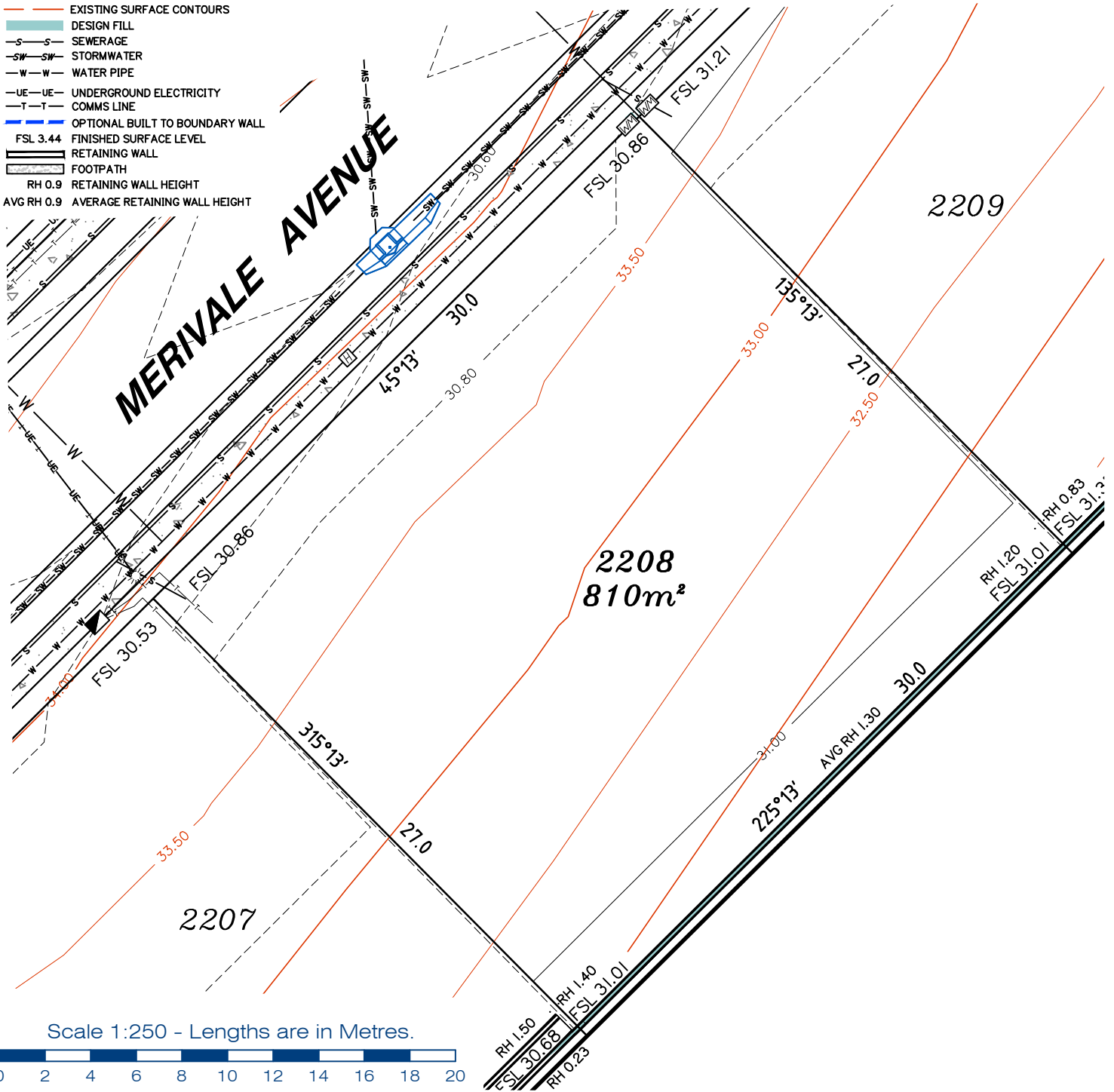


Notes:

- Final areas are subject to design changes, Council approval and field survey and may differ from those shown on this Disclosure Plan.
- Final presentation of areas will comply with requirements of the Registrar of Titles and may vary from the format on this Disclosure Plan
- "The Seller is entitled to make a Permitted Variation (as defined in Special Condition 3 of the contract) to the lot including its location, area, size, dimensions and elevation".
- Design contours are approximate only and may change during construction
- Services have been plotted from design information only and may change during construction
- All earthworks fill to lots has been placed and compacted on Level 1 basis in accordance with Australian Standard AS3798-2007 "Guidelines on earthworks for commercial and residential developments".

LEGEND

- . . SEWER MANHOLE
- . . SEWER MAINTENANCE SHAFT
- . . SEWER RODDING END
- . . STORMWATER MANHOLE
- . . GULLY TRAP
- . . WATER METER
- . . FIRE HYDRANT
- . . STOP VALVE
- . . ELECTRICITY PILLAR
- . . COMMS PIT
- . . RING MAIN UNIT
- . . LIGHT POLE
- DESIGN CONTOURS
- EXISTING SURFACE CONTOURS
- DESIGN FILL
- S-S SEWERAGE
- SW-SW STORMWATER
- W-W WATER PIPE
- UE-UE UNDERGROUND ELECTRICITY
- T-T COMMS LINE
- OPTIONAL BUILT TO BOUNDARY WALL
- FSL 3.44 FINISHED SURFACE LEVEL
- RETAINING WALL
- FOOTPATH
- RH 0.9 RETAINING WALL HEIGHT
- AVG RH 0.9 AVERAGE RETAINING WALL HEIGHT



gassman development perspectives
est 1985

planning | environment | landscape | engineering | survey

T: 3807 3333 | F: 3287 5461 | www.gassman.com.au

LOGAN & Logan | 76 Business Street, Yatala QLD | PO Box 392, Beenleigh 4207

| | |
|---------|--|
| Client | AVJENNINGS Pty Ltd |
| Project | DISCLOSURE PLAN LOT 2208 (Survey plan: SP280871) RIVERTON Cusack Lane, Jimboomba |

| | | | |
|------------------------|--------------------|------------------|-------------------------------|
| Locality | JIMBOOMBA | Issue Date | 21/01/2022 |
| Local Govt | LOGAN CITY COUNCIL | Meridian | SP280865 |
| Scale (on A4 original) | 1:250 | Level Datum | AHD |
| | | Contour Interval | 0.2 m Design 0.5m Existing |
| | | Drawn | S.Chowdhury |
| | | Date Drafted | 10/08/2021 |
| | | Checked | A.Geraghty |

Real Property Description:
Lot 701 on SP280865

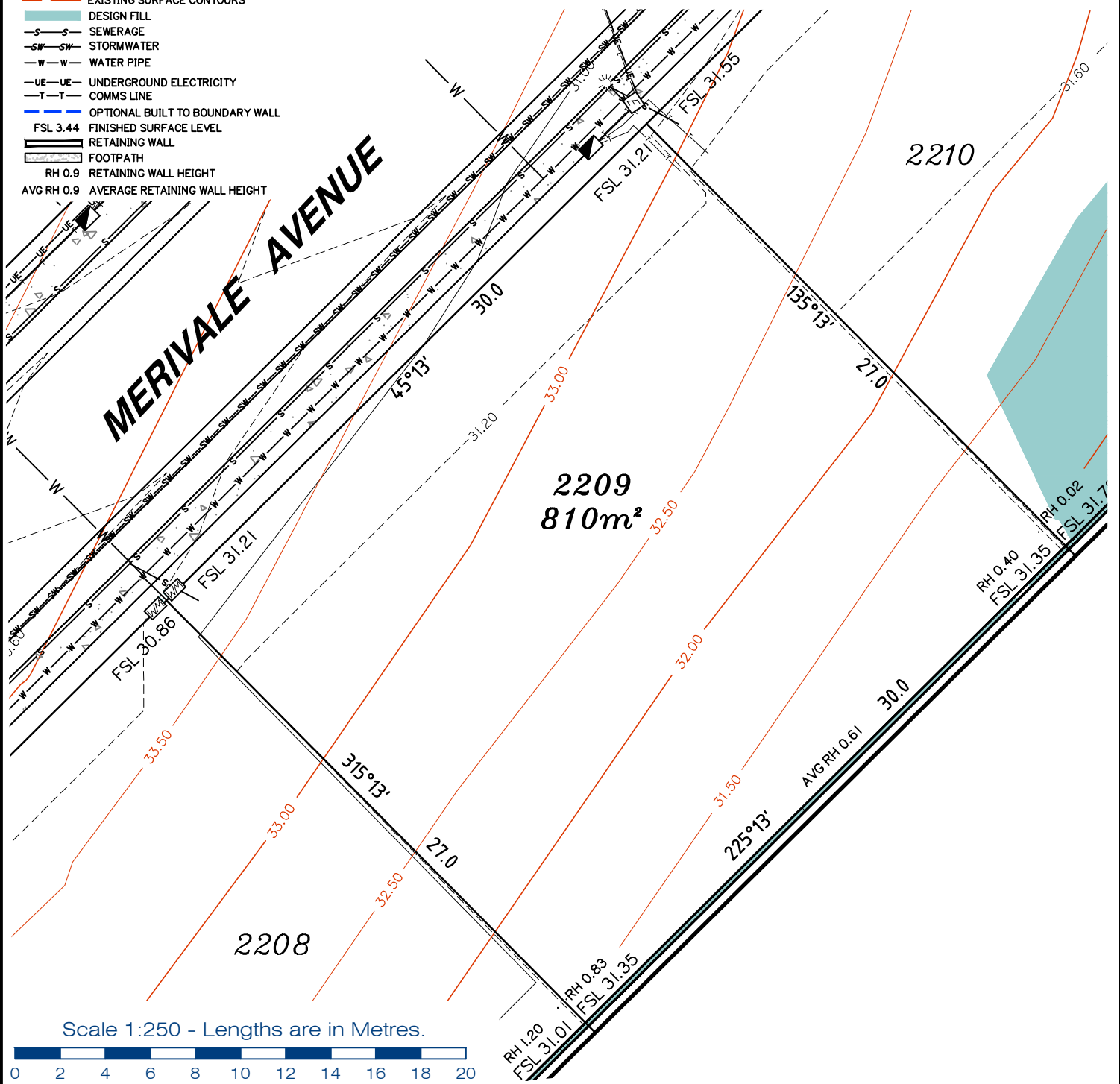
REFERENCE No. **5544-2D**
PLAN No. **5544 S DC LOT 2208 A**

LEGEND

- . . SEWER MANHOLE
- . . SEWER MAINTENANCE SHAFT
- . . SEWER RODDING END
- . . STORMWATER MANHOLE
- . . GULLY TRAP
- . . WATER METER
- . . FIRE HYDRANT
- . . STOP VALVE
- . . ELECTRICITY PILLAR
- . . COMMS PIT
- . . RING MAIN UNIT
- . . LIGHT POLE
- . . DESIGN CONTOURS
- . . EXISTING SURFACE CONTOURS
- . . DESIGN FILL
- . . SEWERAGE
- . . STORMWATER
- . . WATER PIPE
- . . UNDERGROUND ELECTRICITY
- . . COMMS LINE
- . . OPTIONAL BUILT TO BOUNDARY WALL
- . . RETAINING WALL
- . . FOOTPATH
- . . RH 0.9 RETAINING WALL HEIGHT
- . . AVG RH 0.9 AVERAGE RETAINING WALL HEIGHT

Notes:

- Final areas are subject to design changes, Council approval and field survey and may differ from those shown on this Disclosure Plan.
- Final presentation of areas will comply with requirements of the Registrar of Titles and may vary from the format on this Disclosure Plan
- "The Seller is entitled to make a Permitted Variation (as defined in Special Condition 3 of the contract) to the lot including its location, area, size, dimensions and elevation".
- Design contours are approximate only and may change during construction
- Services have been plotted from design information only and may change during construction
- All earthworks fill to lots has been placed and compacted on Level 1 basis in accordance with Australian Standard AS3798-2007 "Guidelines on earthworks for commercial and residential developments".



gassman development perspectives
 est 1985
 planning | environment | landscape | engineering | survey
 T: 3807 3333 | F: 3287 5461 | www.gassman.com.au
 LOGAN & Logan | 76 Business Street, Yatala QLD | PO Box 392, Beenleigh 4207

| | |
|----------------------------|--|
| Client | AVJENNINGS Pty Ltd |
| Project | DISCLOSURE PLAN LOT 2209 (Survey plan: SP280871) RIVERTON Cusack Lane, Jimboomba |
| Real Property Description: | Lot 701 on SP280865 |

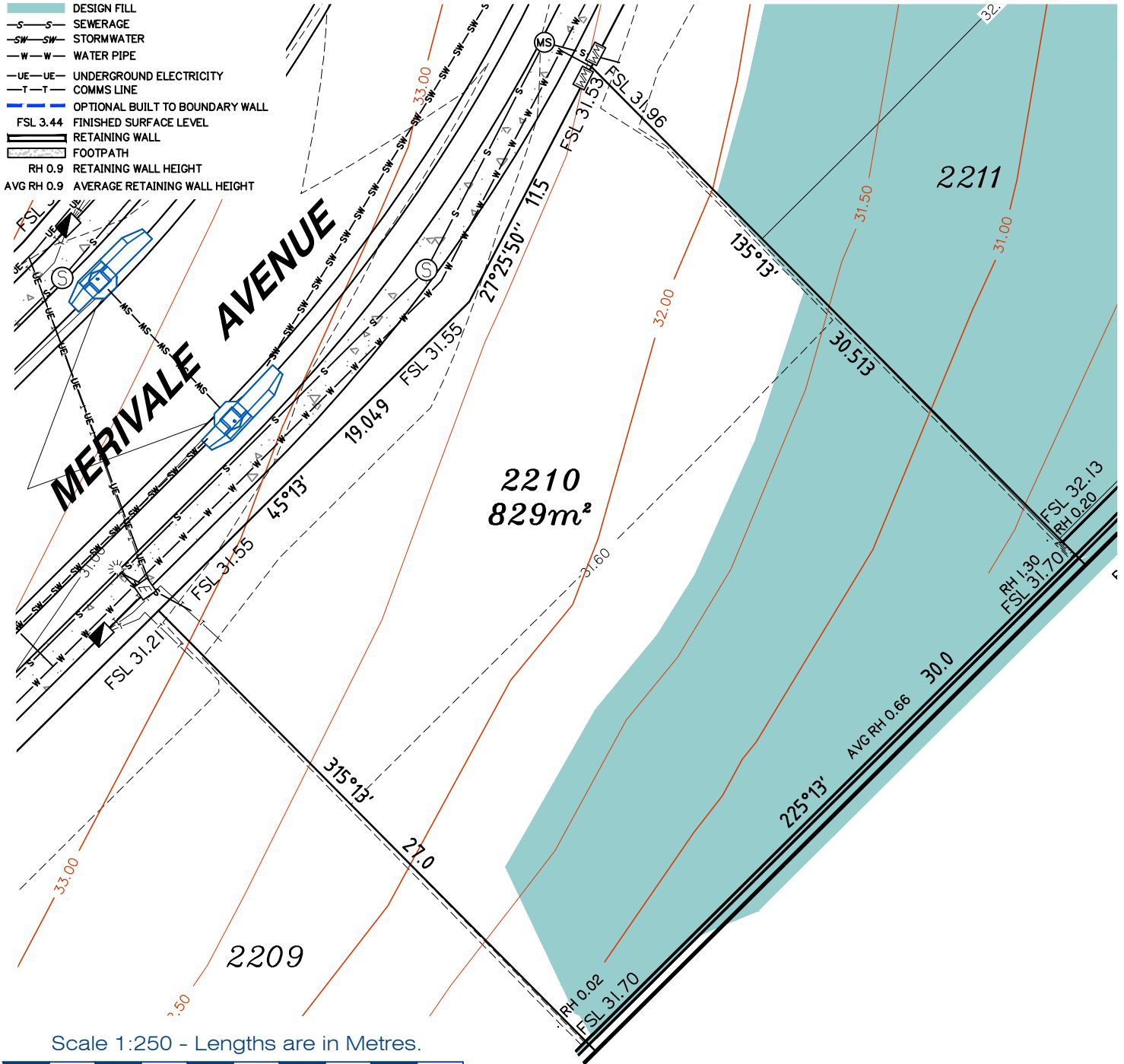
| | | | |
|------------------------|-----------------------------|------------------|-------------------------------|
| Locality | JIMBOOMBA | Issue Date | 24/01/2022 |
| Local Govt | LOGAN CITY COUNCIL | Meridian | SP280865 |
| Scale (on A4 original) | 1:250 | Level Datum | AHD |
| REFERENCE No. | 5544-2D | Contour Interval | 0.2 m Design 0.5m Existing |
| PLAN No. | 5544 S DC LOT 2209 A | Drawn | S.Chowdhury |
| | | Date Drafted | 10/08/2021 |
| | | Checked | A.Geraghty |

LEGEND

- . . . SEWER MANHOLE
- . . . SEWER MAINTENANCE SHAFT
- . . . SEWER RODDING END
- . . . STORMWATER MANHOLE
- . . . GULLY TRAP
- . . . WATER METER
- . . . FIRE HYDRANT
- . . . STOP VALVE
- . . . ELECTRICITY PILLAR
- . . . COMMS PIT
- . . . RING MAIN UNIT
- . . . LIGHT POLE
- . . . DESIGN CONTOURS
- . . . EXISTING SURFACE CONTOURS
- . . . DESIGN FILL
- . . . SEWERAGE
- . . . STORMWATER
- . . . WATER PIPE
- . . . UNDERGROUND ELECTRICITY
- . . . COMMS LINE
- . . . OPTIONAL BUILT TO BOUNDARY WALL
- . . . FSL 3.44 FINISHED SURFACE LEVEL
- . . . RETAINING WALL
- . . . FOOTPATH
- . . . RH 0.9 RETAINING WALL HEIGHT
- . . . AVG RH 0.9 AVERAGE RETAINING WALL HEIGHT

Notes:

- Final areas are subject to design changes, Council approval and field survey and may differ from those shown on this Disclosure Plan.
- Final presentation of areas will comply with requirements of the Registrar of Titles and may vary from the format on this Disclosure Plan
- "The Seller is entitled to make a Permitted Variation (as defined in Special Condition 3 of the contract) to the lot including its location, area, size, dimensions and elevation".
- Design contours are approximate only and may change during construction
- Services have been plotted from design information only and may change during construction
- All earthworks fill to lots has been placed and compacted on Level 1 basis in accordance with Australian Standard AS3798-2007 "Guidelines on earthworks for commercial and residential developments".



Scale 1:250 - Lengths are in Metres.



gassman development perspectives
 est 1985
 planning | environment | landscape | engineering | survey
 T: 3807 3333 | F: 3287 5461 | www.gassman.com.au
 LOGAN & Logan | 76 Business Street, Yatala QLD | PO Box 392, Beenleigh 4207

| | |
|---------|--|
| Client | AVJENNINGS Pty Ltd |
| Project | DISCLOSURE PLAN LOT 2210 (Survey plan: SP280871) RIVERTON Cusack Lane, Jimboomba |

| | | | |
|------------------------|--------------------|------------------|-------------------------------|
| Locality | JIMBOOMBA | Issue Date | 24/01/2022 |
| Local Govt | LOGAN CITY COUNCIL | Meridian | SP280865 |
| Scale (on A4 original) | 1:250 | Level Datum | AHD |
| | | Contour Interval | 0.2 m Design 0.5m Existing |
| | | Drawn | S.Chowdhury |
| | | Date Drafted | 10/08/2021 |
| | | Checked | A.Geraghty |

Real Property Description:
 Lot 701 on SP280865

REFERENCE No. 5544-2D
PLAN No. 5544 S DC LOT 2210 B

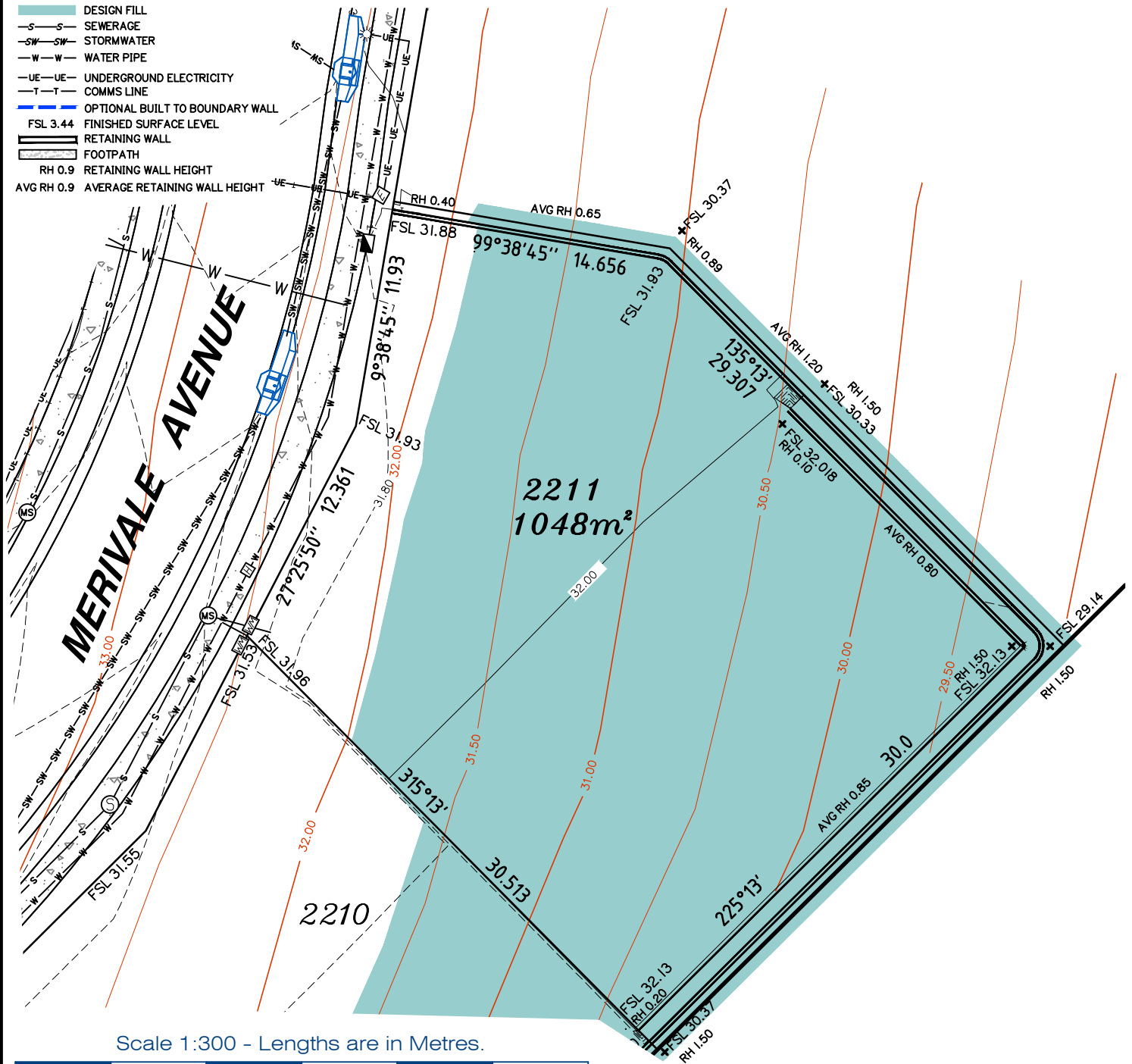


LEGEND

- . . . SEWER MANHOLE
- . . . SEWER MAINTENANCE SHAFT
- . . . SEWER RODDING END
- . . . STORMWATER MANHOLE
- . . . GULLY TRAP
- . . . WATER METER
- . . . FIRE HYDRANT
- . . . STOP VALVE
- . . . ELECTRICITY PILLAR
- . . . COMMS PIT
- . . . RING MAIN UNIT
- . . . LIGHT POLE
- . . . DESIGN CONTOURS
- . . . EXISTING SURFACE CONTOURS
- . . . DESIGN FILL
- . . . SEWERAGE
- . . . STORMWATER
- . . . WATER PIPE
- . . . UNDERGROUND ELECTRICITY
- . . . COMMS LINE
- . . . OPTIONAL BUILT TO BOUNDARY WALL
- . . . FINISHED SURFACE LEVEL
- . . . RETAINING WALL
- . . . FOOTPATH
- . . . RETAINING WALL HEIGHT
- . . . AVERAGE RETAINING WALL HEIGHT

Notes:

- Final areas are subject to design changes, Council approval and field survey and may differ from those shown on this Disclosure Plan.
- Final presentation of areas will comply with requirements of the Registrar of Titles and may vary from the format on this Disclosure Plan
- "The Seller is entitled to make a Permitted Variation (as defined in Special Condition 3 of the contract) to the lot including its location, area, size, dimensions and elevation".
- Design contours are approximate only and may change during construction
- Services have been plotted from design information only and may change during construction
- All earthworks fill to lots has been placed and compacted on Level 1 basis in accordance with Australian Standard AS3798-2007 "Guidelines on earthworks for commercial and residential developments".



gassman
development
perspectives

est 1985

planning | environment | landscape | engineering | survey

T: 3807 3333 | F: 3287 5461 | www.gassman.com.au

LOGAN & Logan | 176 Business Street, Yatala QLD | PO Box 392, Beenleigh 4207

| | |
|----------------|--|
| Client | AVJENNINGS Pty Ltd |
| Project | DISCLOSURE PLAN LOT 2211 (Survey plan: SP280871) RIVERTON Cusack Lane, Jimboomba |

| | | | |
|-------------------------------|--------------------|-------------------------|-------------------------------|
| Locality | JIMBOOMBA | Issue Date | 25/01/2022 |
| Local Govt | LOGAN CITY COUNCIL | Meridian | SP280865 |
| Scale (on A4 original) | 1:300 | Level Datum | AHD |
| | | Contour Interval | 0.2 m Design 0.5m Existing |
| | | Drawn | S.Chowdhury |
| | | Date Drafted | 10/08/2021 |
| | | Checked | A.Geraghty |

Real Property Description:
Lot 701 on SP280865

REFERENCE No. 5544-2D
PLAN No. 5544 S DC LOT 2211 D