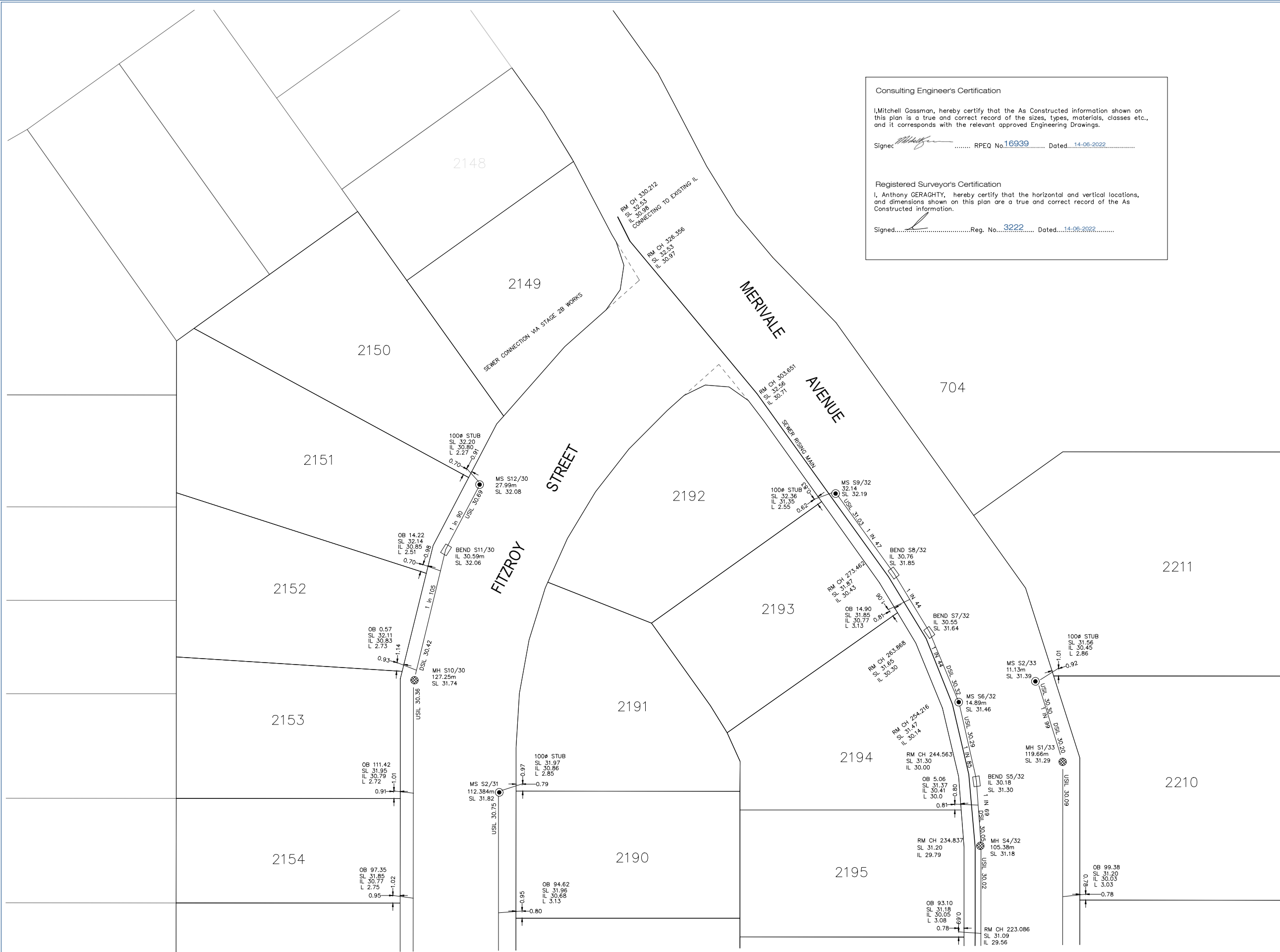




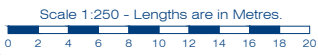
Consulting Engineer's Certification
 I, Mitchell Gassman, hereby certify that the As Constructed information shown on this plan is a true and correct record of the sizes, types, materials, classes etc., and it corresponds with the relevant approved Engineering Drawings.
 Signed: *Mitchell Gassman* RPEQ No. 16939 Dated: 14-06-2022

Registered Surveyor's Certification
 I, Anthony GERAGHTY, hereby certify that the horizontal and vertical locations, and dimensions shown on this plan are a true and correct record of the As Constructed information.
 Signed: *Anthony Geraghty* Reg. No. 3222 Dated: 14-06-2022



NOTES
 ALL SEWER LINES 150Ø uPVC SN8 u.n.o.
 ALL SEWER CONNECTIONS 100Ø uPVC SN6 u.n.o.
 SEWER RISING MAIN 90Ø uPVC SN16 u.n.o.

- LEGEND**
- SEWER MAINTENANCE SHAFT
 - ⊗ SEWER MANHOLE
 - RODDING END
 - SEWER BEND
 - SEWER LINES
 - SEWER HOUSE CONNECTIONS
 - ⊔ SEWER ENDCAP
 - SEWER RISING MAIN LINES



JOINT TO SHEET 2

Issue	Date	Description	SC	AG	DRN	CHK
-	20/05/2022	ORIGINAL ISSUE				

Project: **RIVERTON STAGE 2CD
JIMBOOMBA**

Client: **AVJENNINGS SPV NO. 20 PTY LTD**

©2012 Gassman Development Perspectives. All rights reserved. No part of this document may be reproduced or transmitted in any form or by any means, electronic, mechanical, photocopying, recording, or otherwise, without the written permission of Gassman Development Perspectives.

Scale at A1: **1:250**

Date: **12-09-22**

Surveyed: **TH**

Drawn: **SC**

Checked: **TH**

Drawing Title: **AS CONSTRUCTED PLAN
STAGE 2CD - SEWER
SHEET 1 OF 5**

Drawing No: **5544-250-STG 2CD SEWER** Revision No: **-**

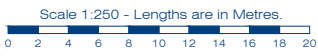


Consulting Engineers Certification
 I, Mitchell Gassman, hereby certify that the As Constructed information shown on this plan is a true and correct record of the sizes, types, materials, classes etc., and it corresponds with the relevant approved Engineering Drawings.
 Signed: *[Signature]* RPEQ No. 16939 Dated: 14-06-2022

Registered Surveyor's Certification
 I, Anthony GERAGHTY, hereby certify that the horizontal and vertical locations, and dimensions shown on this plan are a true and correct record of the As Constructed information.
 Signed: *[Signature]* Reg. No. 3222 Dated: 14-06-2022

NOTES
 ALL SEWER LINES 150Ø uPVC SN8 u.n.o.
 ALL SEWER HOUSE CONNECTIONS 100Ø uPVC SN6 u.n.o.
 SEWER RISING MAIN 90Ø uPVC SN16 u.n.o.

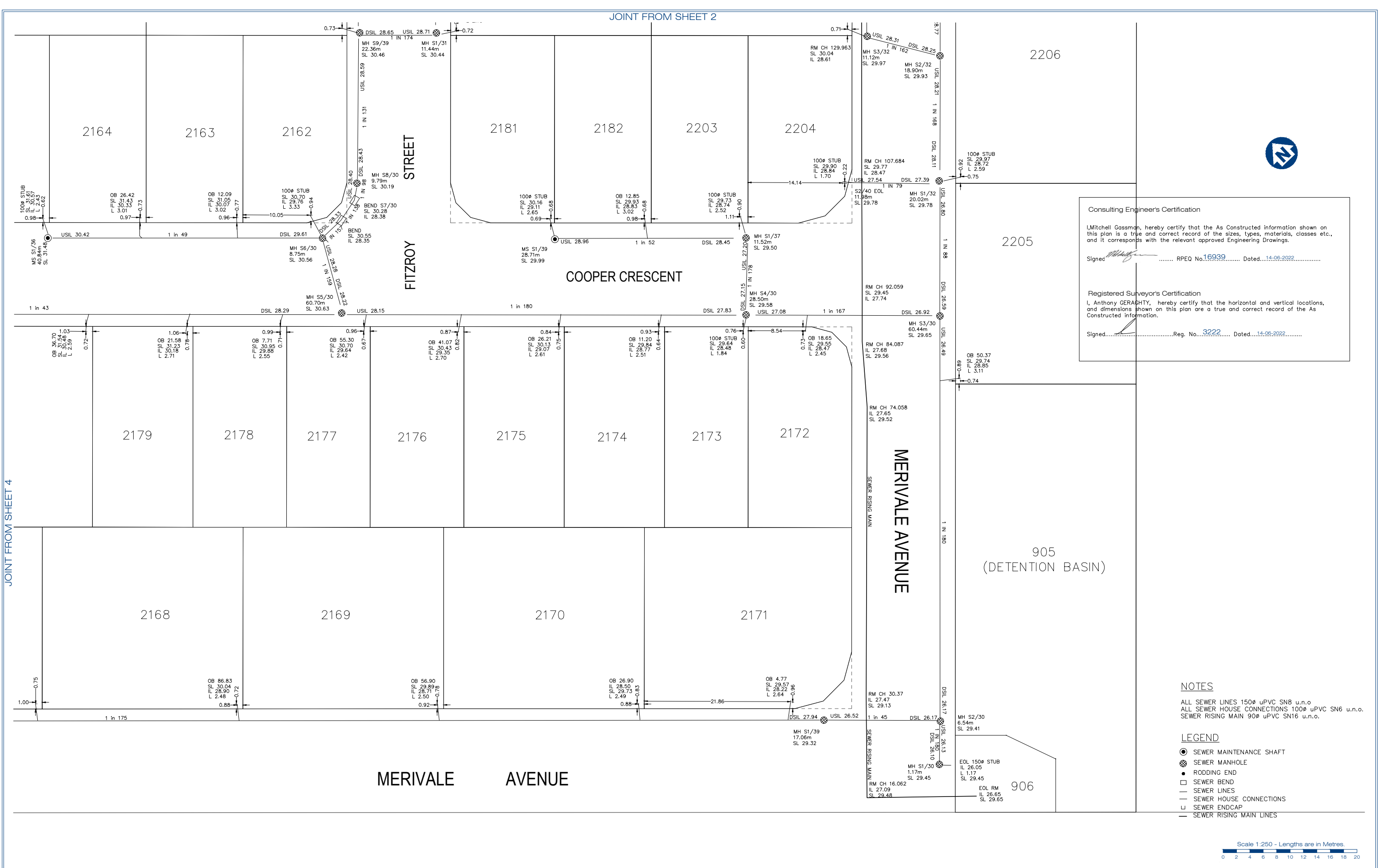
LEGEND
 ● SEWER MAINTENANCE SHAFT
 ● SEWER MANHOLE
 ● RODDING END
 □ SEWER BEND
 — SEWER LINES
 — SEWER HOUSE CONNECTIONS
 ⊥ SEWER ENDCAP
 — SEWER RISING MAIN LINES



JOINT TO SHEET 4

JOINT TO SHEET 3

 <p>gassman development perspectives est. 1985 planning environment landscape engineering survey T: 3807 3333 F: 3287 5461 www.gassman.com.au Gold Coast & Logan 176 Business Street, Yatala QLD PO Box 392, Beenleigh 4207</p>	Project: RIVERTON STAGE 2CD JIMBOOMBA	© 2012 Gassman Development Perspectives All rights reserved. No part of this document may be reproduced or transmitted in any form or by any means, electronic, mechanical, photocopying, recording, or otherwise, without the written permission of Gassman Development Perspectives.	Scale at A1: 1:250	Drawing Title: AS CONSTRUCTED PLAN STAGE 2CD - SEWER SHEET 2 OF 5													
	Client: AVJENNINGS SPV NO. 20 PTY LTD		Date: 12-09-22		Surveyed: TH	Drawing No: 5544-250-STG 2CD SEWER											
<table border="1"> <thead> <tr> <th>Issue</th> <th>Date</th> <th>Description</th> <th>SC</th> <th>TH</th> </tr> </thead> <tbody> <tr> <td>-</td> <td>20/05/2022</td> <td>ORIGINAL ISSUE</td> <td>SC</td> <td>TH</td> </tr> <tr> <td>-</td> <td></td> <td></td> <td>DRN</td> <td>CHK</td> </tr> </tbody> </table>	Issue	Date	Description	SC	TH	-	20/05/2022	ORIGINAL ISSUE	SC	TH	-			DRN	CHK	Checked: TH	Revision No: -
Issue	Date	Description	SC	TH													
-	20/05/2022	ORIGINAL ISSUE	SC	TH													
-			DRN	CHK													

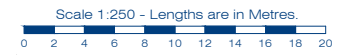


Consulting Engineer's Certification
 I, Mitchell Gassman, hereby certify that the As Constructed information shown on this plan is a true and correct record of the sizes, types, materials, classes etc., and it corresponds with the relevant approved Engineering Drawings.
 Signed: *Mitchell Gassman* RPEQ No. 16939 Dated: 14-06-2022

Registered Surveyor's Certification
 I, Anthony GERAGHTY, hereby certify that the horizontal and vertical locations, and dimensions shown on this plan are a true and correct record of the As Constructed information.
 Signed: *Anthony Geraghty* Reg. No. 3222 Dated: 14-06-2022

NOTES
 ALL SEWER LINES 150# uPVC SN8 u.n.o
 ALL SEWER HOUSE CONNECTIONS 100# uPVC SN6 u.n.o.
 SEWER RISING MAIN 90# uPVC SN16 u.n.o.

LEGEND
 ● SEWER MAINTENANCE SHAFT
 ● SEWER MANHOLE
 ● RODDING END
 □ SEWER BEND
 — SEWER LINES
 — SEWER HOUSE CONNECTIONS
 — SEWER ENDCAP
 — SEWER RISING MAIN LINES



Issue	Date	Description	SC	AG	DRN	CHK
-	20/05/2022	ORIGINAL ISSUE				

Project: **RIVERTON STAGE 2CD**
JIMBOOMBA

Client: **AVJENNINGS SPV NO. 20 PTY LTD**

© 2012 Gassman Development Perspectives. All rights reserved. No part of this document may be reproduced or transmitted in any form or by any means, electronic, mechanical, photocopying, recording, or otherwise, without the written permission of Gassman Development Perspectives.

Scale at A1: **1:250**
 Date: **12-09-22**
 Surveyed: **TH**
 Drawn: **SC**
 Checked: **TH**

Drawing Title: **AS CONSTRUCTED PLAN**
STAGE 2CD - SEWER
SHEET 3 OF 5

Drawing No: **5544-250-STG 2B SEWER** Revision No: **-**

JOINT FROM SHEET 2



MERIVALE AVENUE

COOPER CRESCENT

2092

SEWER CONNECTION VIA STAGE 2B WORKS

2093

2094

2095

2091

2086

MS S3/39
132.65m
SL 32.55

100# STUB
SL 32.74
IL 31.38
L 2.07

USL 31.02

OB 100.90
SL 32.06
IL 30.92
L 2.48

1 in 60

NOTES

ALL SEWER LINES 150# uPVC SN8 u.n.o.
ALL SEWER HOUSE CONNECTIONS 100# uPVC SN6 u.n.o.
SEWER RISING MAIN 90# uPVC SN16 u.n.o.

LEGEND

- SEWER MAINTENANCE SHAFT
- ⊗ SEWER MANHOLE
- RODDING END
- SEWER BEND
- SEWER LINES
- SEWER HOUSE CONNECTIONS
- └ SEWER ENDCAP
- SEWER RISING MAIN LINES



JOINT FROM SHEET 4



planning | environment | landscape | engineering | survey
T: 3807 3333 | F: 3287 5461 | www.gassman.com.au
Gold Coast & Logan | 176 Business Street, Yatala QLD | PO Box 392, Beenleigh 4207

Issue	Date	Description	SC	AG	DRN	CHK
-	20/05/2022	ORIGINAL ISSUE				

Project: **RIVERTON STAGE 2CD
JIMBOOMBA**

Client: **AVJENNINGS SPV NO. 20 PTY LTD**

©2012 Gassman Development Perspectives
All rights reserved. No part of this document may be reproduced or transmitted in any form or by any means, electronic, mechanical, photocopying, recording, or otherwise, without the written permission of Gassman Development Perspectives.

Scale at A1: **1:250**

Date: **12-09-22**

Surveyed: **TH**

Drawn: **SC**

Checked: **TH**

Drawing Title: **AS CONSTRUCTED PLAN
STAGE 2CD - SEWER
SHEET 5 OF 5**

Drawing No: **5544-250-STG 2CD SEWER**

Revision No: **-**