

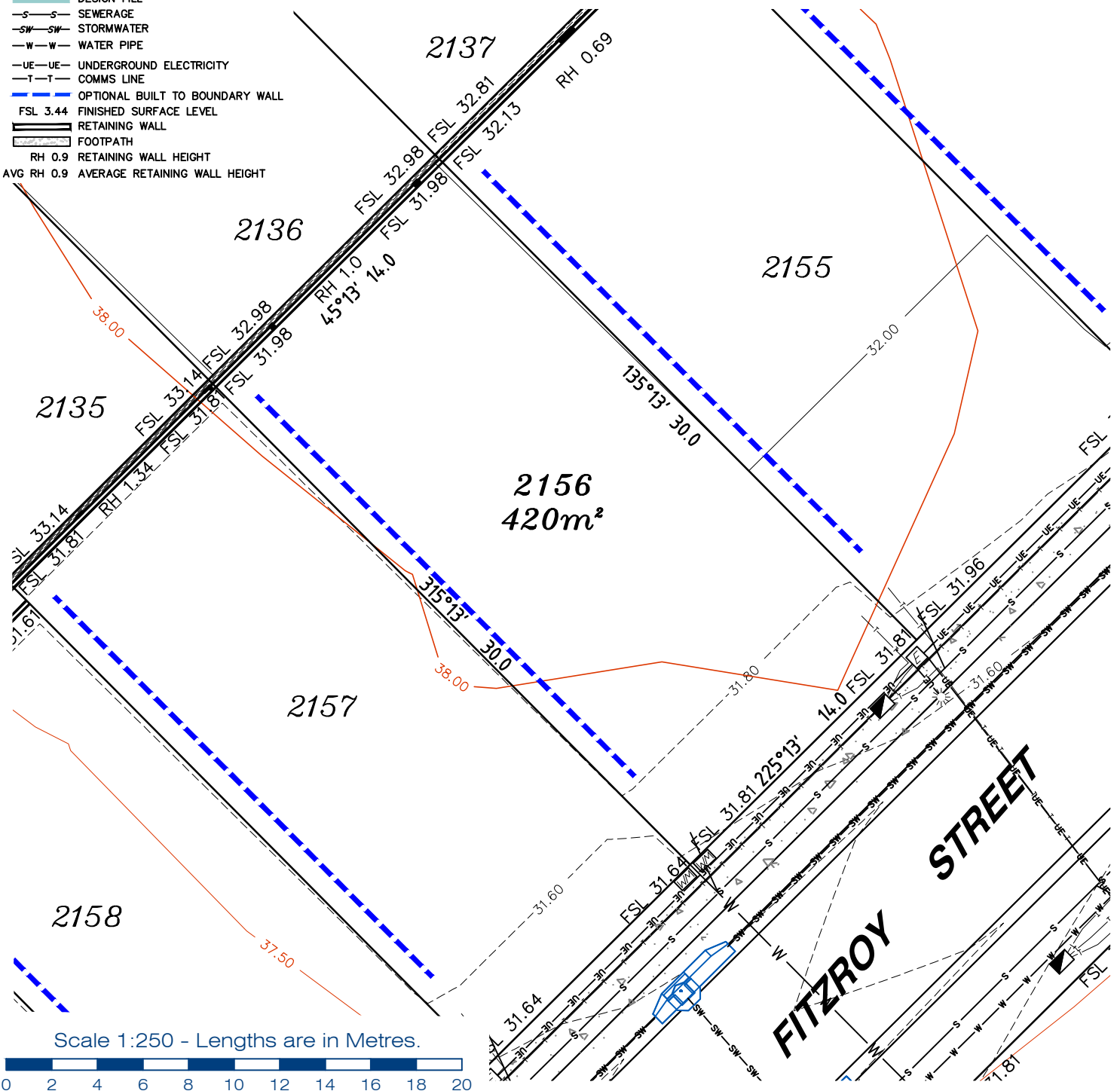
**LEGEND**

- . . SEWER MANHOLE
- ⊗ . . SEWER MAINTENANCE SHAFT
- ⊙ . . SEWER RODDING END
- ⊕ . . STORMWATER MANHOLE
- ⊖ . . GULLY TRAP
- ⊗ . . WATER METER
- ⊕ . . FIRE HYDRANT
- ⊖ . . STOP VALVE
- ⊗ . . ELECTRICITY PILLAR

- ◻ . . COMMS PIT
- ◻ . . RING MAIN UNIT
- ⊙ . . LIGHT POLE
- - - DESIGN CONTOURS
- - - EXISTING SURFACE CONTOURS
- - - DESIGN FILL
- - - SEWERAGE
- SW - SW - STORMWATER
- W - W - WATER PIPE
- UE - UE - UNDERGROUND ELECTRICITY
- T - T - COMMS LINE
- - - OPTIONAL BUILT TO BOUNDARY WALL
- FSL 3.44 FINISHED SURFACE LEVEL
- ▬▬▬ RETAINING WALL
- ▬▬▬ FOOTPATH
- RH 0.9 RETAINING WALL HEIGHT
- AVG RH 0.9 AVERAGE RETAINING WALL HEIGHT

**Notes:**

- Final areas are subject to design changes, Council approval and field survey and may differ from those shown on this Disclosure Plan.
- Final presentation of areas will comply with requirements of the Registrar of Titles and may vary from the format on this Disclosure Plan
- "The Seller is entitled to make a Permitted Variation (as defined in Special Condition 3 of the contract) to the lot including its location, area, size, dimensions and elevation".
- Design contours are approximate only and may change during construction
- Services have been plotted from design information only and may change during construction
- All earthworks fill to lots has been placed and compacted on Level 1 basis in accordance with Australian Standard AS3798-2007 "Guidelines on earthworks for commercial and residential developments".



Scale 1:250 - Lengths are in Metres.



**gassman  
development  
perspectives**

planning | environment | landscape | engineering | survey

T: 3807 3333 | F: 3287 5461 | www.gassman.com.au

LOGAN & Logan | 76 Business Street, Yatala QLD | PO Box 392, Beenleigh 4207

Client

**AVJENNINGS Pty Ltd**

Project

**DISCLOSURE PLAN**

**LOT 2156**

(Survey plan: SP280869)

**RIVERTON**

**Cusack Lane, Jimboomba**

Locality

JIMBOOMBA

Local Govt

LOGAN  
CITY COUNCIL

Scale (on A4 original)

1:250

Issue Date

16/03/2022

Meridian

SP280865

Level Datum

AHD

Contour Interval

0.2 m Design  
0.5m Existing

Drawn

S.Chowdhury

Date Drafted

20/08/2021

Checked

A.Geraghty

**Real Property Description:**

Lot 701 on SP280865

REFERENCE No.

**5544-2C**

PLAN No. **5544 S DC LOT 2156A**

**LEGEND**

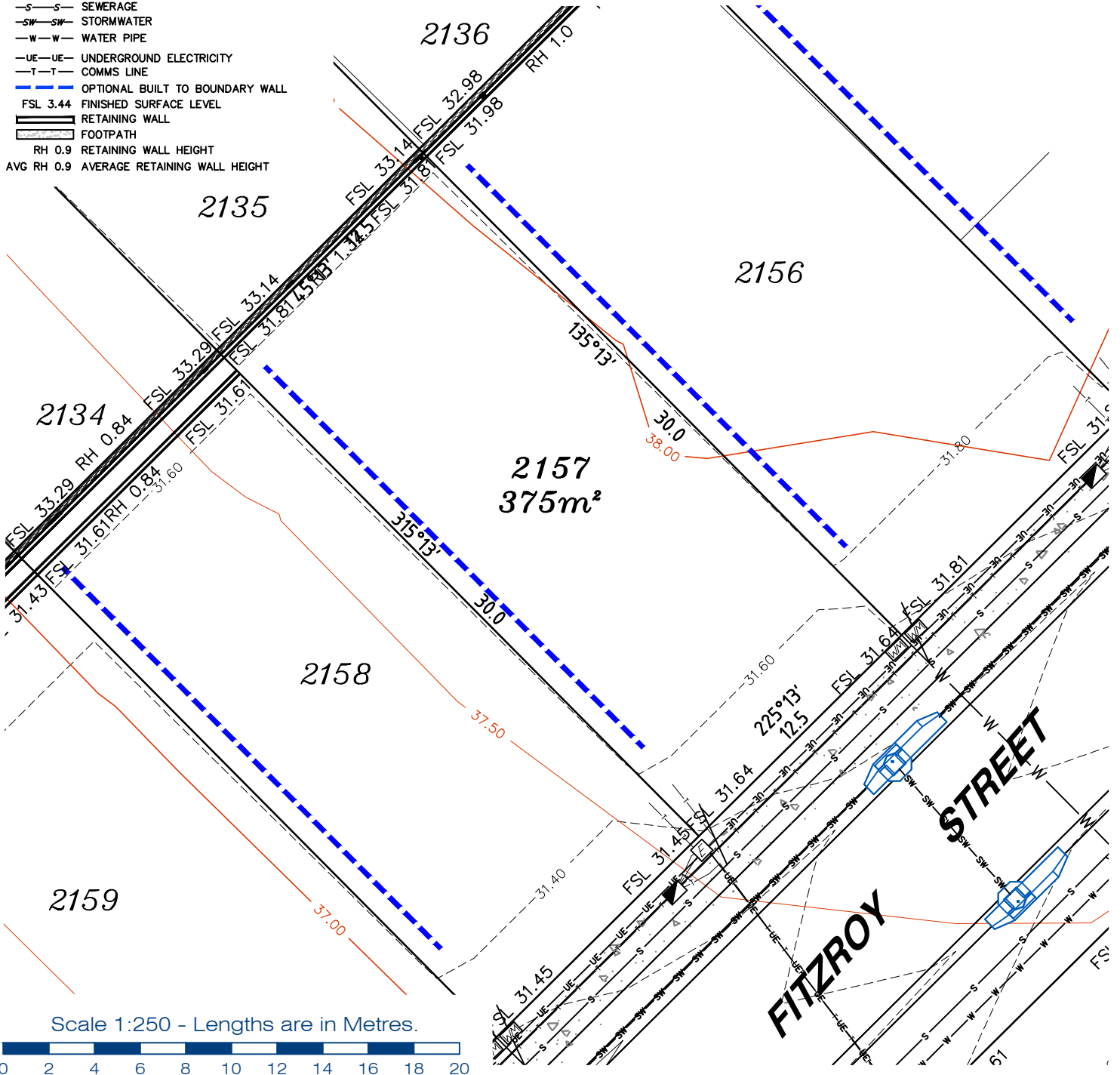
- . . SEWER MANHOLE
- . . SEWER MAINTENANCE SHAFT
- . . SEWER RODDING END
- . . STORMWATER MANHOLE
- . . GULLY TRAP
- . . WATER METER
- . . FIRE HYDRANT
- . . STOP VALVE
- . . ELECTRICITY PILLAR

- . . COMMS PIT
- . . RING MAIN UNIT
- . . LIGHT POLE

- DESIGN CONTOURS
- EXISTING SURFACE CONTOURS
- DESIGN FILL
- S—S— SEWERAGE
- SW—SW— STORMWATER
- W—W— WATER PIPE
- UE—UE— UNDERGROUND ELECTRICITY
- T—T— COMMS LINE
- OPTIONAL BUILT TO BOUNDARY WALL
- FSL 3.44 FINISHED SURFACE LEVEL
- RETAINING WALL
- FOOTPATH
- RH 0.9 RETAINING WALL HEIGHT
- AVG RH 0.9 AVERAGE RETAINING WALL HEIGHT

**Notes:**

- Final areas are subject to design changes, Council approval and field survey and may differ from those shown on this Disclosure Plan.
- Final presentation of areas will comply with requirements of the Registrar of Titles and may vary from the format on this Disclosure Plan
- "The Seller is entitled to make a Permitted Variation (as defined in Special Condition 3 of the contract) to the lot including its location, area, size, dimensions and elevation".
- Design contours are approximate only and may change during construction
- Services have been plotted from design information only and may change during construction
- All earthworks fill to lots has been placed and compacted on Level 1 basis in accordance with Australian Standard AS3798-2007 "Guidelines on earthworks for commercial and residential developments".



**gassman  
development  
perspectives**

planning | environment | landscape | engineering | survey

T: 3807 3333 | F: 3287 5461 | www.gassman.com.au

LOGAN & Logan | 176 Business Street, Yatala QLD | PO Box 392, Beenleigh 4207

Client

**AVJENNINGS Pty Ltd**

Project

**DISCLOSURE PLAN**

**LOT 2157**

(Survey plan: SP280869)

**RIVERTON**

**Cusack Lane, Jimboomba**

Locality JIMBOOMBA  
Local Govt LOGAN CITY COUNCIL

Scale (on A4 original)  
**1:250**

Issue Date 16/03/2021  
Meridian SP280865  
Level Datum AHD  
Contour Interval 0.2 m Design  
0.5m Existing  
Drawn S.Chowdhury  
Date Drafted 20/08/2021  
Checked A.Geraghty

**Real Property Description:**

Lot 701 on SP280865

REFERENCE No. **5544-2C**

PLAN No. **5544 S DC LOT 2157A**



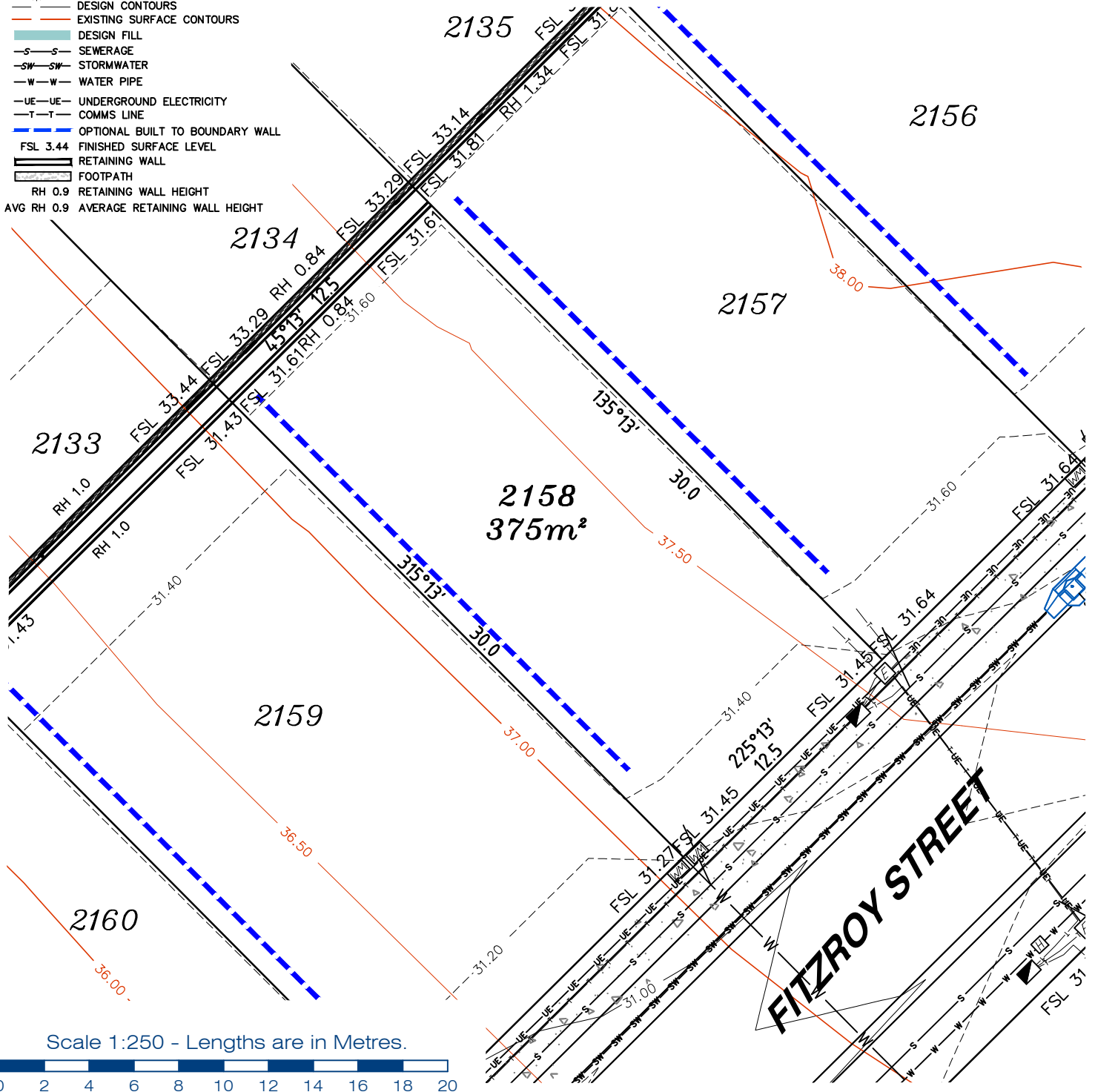
**LEGEND**

- . . SEWER MANHOLE
- . . SEWER MAINTENANCE SHAFT
- . . SEWER RODDING END
- . . STORMWATER MANHOLE
- . . GULLY TRAP
- . . WATER METER
- . . FIRE HYDRANT
- . . STOP VALVE
- . . ELECTRICITY PILLAR

- . . COMMS PIT
- . . RING MAIN UNIT
- . . LIGHT POLE
- DESIGN CONTOURS
- EXISTING SURFACE CONTOURS
- DESIGN FILL
- SEWERAGE
- STORMWATER
- WATER PIPE
- UNDERGROUND ELECTRICITY
- COMMS LINE
- OPTIONAL BUILT TO BOUNDARY WALL
- FINISHED SURFACE LEVEL
- RETAINING WALL
- FOOTPATH
- RETAINING WALL HEIGHT
- AVERAGE RETAINING WALL HEIGHT

**Notes:**

- Final areas are subject to design changes, Council approval and field survey and may differ from those shown on this Disclosure Plan.
- Final presentation of areas will comply with requirements of the Registrar of Titles and may vary from the format on this Disclosure Plan
- "The Seller is entitled to make a Permitted Variation (as defined in Special Condition 3 of the contract) to the lot including its location, area, size, dimensions and elevation".
- Design contours are approximate only and may change during construction
- Services have been plotted from design information only and may change during construction
- All earthworks fill to lots has been placed and compacted on Level 1 basis in accordance with Australian Standard AS3798-2007 "Guidelines on earthworks for commercial and residential developments".



Client	<b>AVJENNINGS Pty Ltd</b>
Project	<b>DISCLOSURE PLAN</b> <b>LOT 2158</b> (Survey plan: SP280869) <b>RIVERTON</b> <b>Cusack Lane, Jimboomba</b>

Locality	JIMBOOMBA	Issue Date	16/03/2022
Local Govt	LOGAN CITY COUNCIL	Meridian	SP280865
Scale (on A4 original)	1:250	Level Datum	AHD
		Contour Interval	0.2 m Design 0.5m Existing
		Drawn	S.Chowdhury
		Date Drafted	20/08/2021
		Checked	A.Geraghty

**Real Property Description:**  
Lot 701 on SP280865

REFERENCE No. **5544-2C**  
PLAN No. **5544 S DC LOT 2158A**

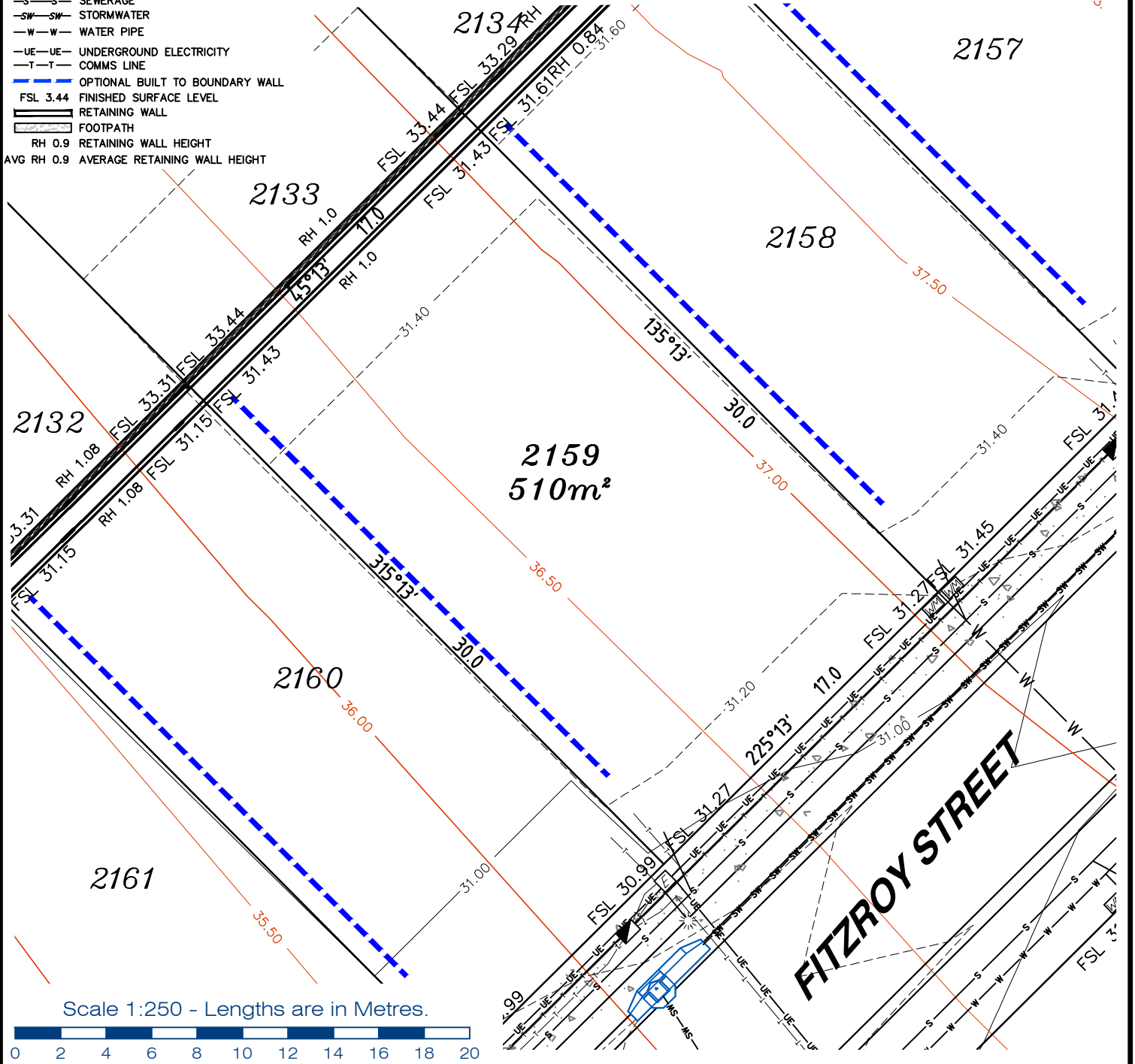
**gassman development perspectives**  
est 1985  
planning | environment | landscape | engineering | survey  
T: 3807 3333 | F: 3287 5461 | www.gassman.com.au  
LOGAN & Logan | 176 Business Street, Yatala QLD | PO Box 392, Beenleigh 4207

**LEGEND**

- . . SEWER MANHOLE
- . . SEWER MAINTENANCE SHAFT
- . . SEWER RODDING END
- . . STORMWATER MANHOLE
- . . GULLY TRAP
- . . WATER METER
- . . FIRE HYDRANT
- . . STOP VALVE
- . . ELECTRICITY PILLAR
- . . COMMS PIT
- . . RING MAIN UNIT
- . . LIGHT POLE
- . . DESIGN CONTOURS
- . . EXISTING SURFACE CONTOURS
- . . DESIGN FILL
- . . SEWERAGE
- . . STORMWATER
- . . WATER PIPE
- . . UNDERGROUND ELECTRICITY
- . . COMMS LINE
- . . OPTIONAL BUILT TO BOUNDARY WALL
- . . FINISHED SURFACE LEVEL
- . . RETAINING WALL
- . . FOOTPATH
- . . RETAINING WALL HEIGHT
- . . AVERAGE RETAINING WALL HEIGHT

**Notes:**

- Final areas are subject to design changes, Council approval and field survey and may differ from those shown on this Disclosure Plan.
- Final presentation of areas will comply with requirements of the Registrar of Titles and may vary from the format on this Disclosure Plan
- "The Seller is entitled to make a Permitted Variation (as defined in Special Condition 3 of the contract) to the lot including its location, area, size, dimensions and elevation".
- Design contours are approximate only and may change during construction
- Services have been plotted from design information only and may change during construction
- All earthworks fill to lots has been placed and compacted on Level 1 basis in accordance with Australian Standard AS3798-2007 "Guidelines on earthworks for commercial and residential developments".



**gassman development perspectives**  
est 1985

planning | environment | landscape | engineering | survey

T: 3807 3333 | F: 3287 5461 | www.gassman.com.au

LOGAN & Logan | 76 Business Street, Yatala QLD | PO Box 392, Beenleigh 4207

Client	<b>AVJENNINGS Pty Ltd</b>
Project	<b>DISCLOSURE PLAN</b> <b>LOT 2159</b> (Survey plan: SP280869) <b>RIVERTON</b> <b>Cusack Lane, Jimboomba</b>

Locality	JIMBOOMBA	Issue Date	16/03/2022
Local Govt	LOGAN CITY COUNCIL	Meridian	SP280865
Scale (on A4 original)	1:250	Level Datum	AHD
		Contour Interval	0.2 m Design 0.5m Existing
		Drawn	S.Chowdhury
		Date Drafted	10/08/2021
		Checked	A.Geraghty

**Real Property Description:**  
Lot 701 on SP280865

REFERENCE No. **5544-2C**  
PLAN No. **5544 S DC LOT 2159A**

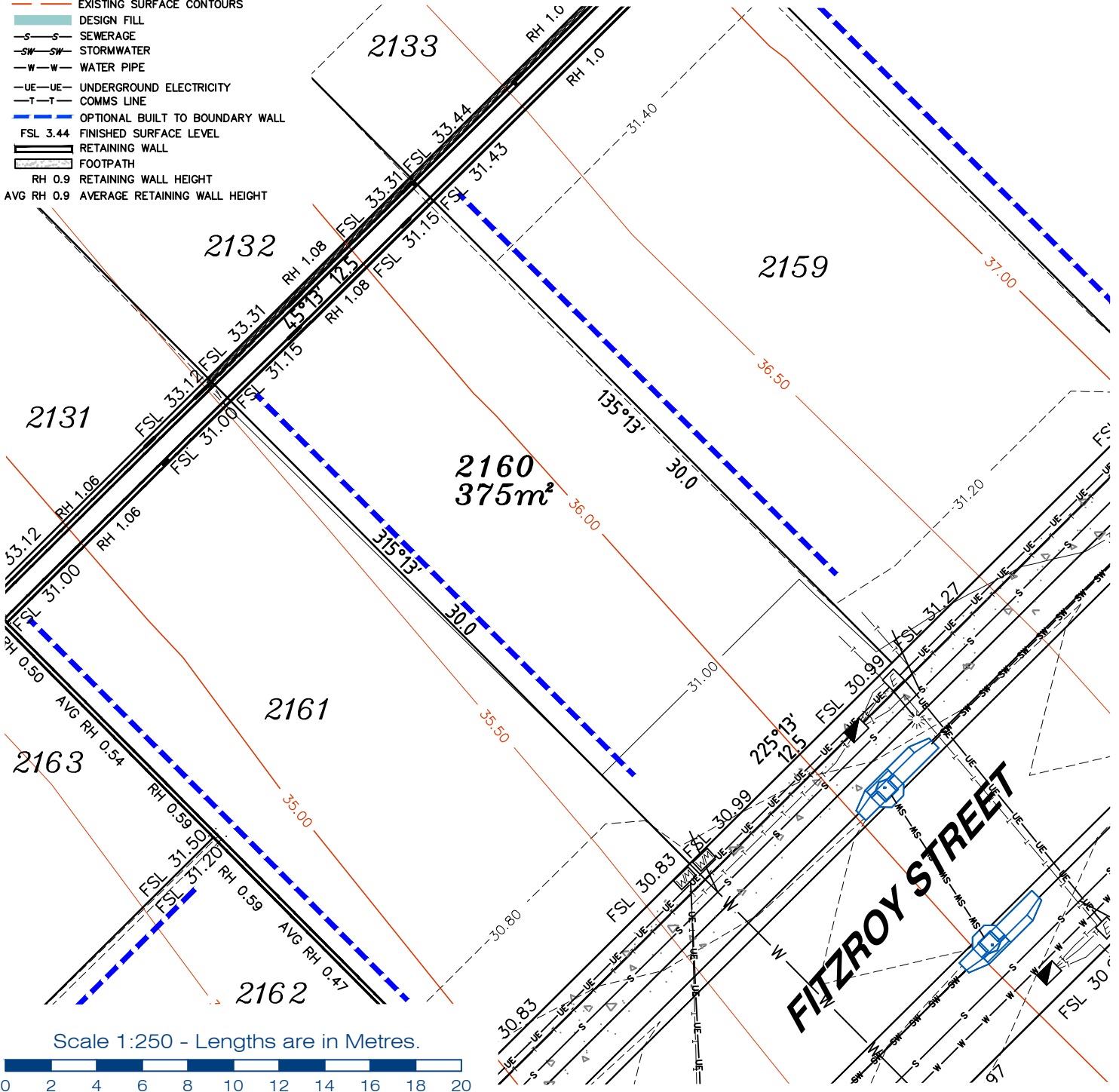


**LEGEND**

- . . SEWER MANHOLE
- . . SEWER MAINTENANCE SHAFT
- . . SEWER RODDING END
- . . STORMWATER MANHOLE
- . . GULLY TRAP
- . . WATER METER
- . . FIRE HYDRANT
- . . STOP VALVE
- . . ELECTRICITY PILLAR
- . . COMMS PIT
- . . RING MAIN UNIT
- . . LIGHT POLE
- . . DESIGN CONTOURS
- . . EXISTING SURFACE CONTOURS
- . . DESIGN FILL
- . . SEWERAGE
- . . STORMWATER
- . . WATER PIPE
- . . UNDERGROUND ELECTRICITY
- . . COMMS LINE
- . . OPTIONAL BUILT TO BOUNDARY WALL
- . . FINISHED SURFACE LEVEL
- . . RETAINING WALL
- . . FOOTPATH
- . . RH 0.9 RETAINING WALL HEIGHT
- . . AVG RH 0.9 AVERAGE RETAINING WALL HEIGHT

**Notes:**

- Final areas are subject to design changes, Council approval and field survey and may differ from those shown on this Disclosure Plan.
- Final presentation of areas will comply with requirements of the Registrar of Titles and may vary from the format on this Disclosure Plan
- "The Seller is entitled to make a Permitted Variation (as defined in Special Condition 3 of the contract) to the lot including its location, area, size, dimensions and elevation".
- Design contours are approximate only and may change during construction
- Services have been plotted from design information only and may change during construction
- All earthworks fill to lots has been placed and compacted on Level 1 basis in accordance with Australian Standard AS3798-2007 "Guidelines on earthworks for commercial and residential developments".



**gassman**  
**development**  
**perspectives**

est 1985

planning | environment | landscape | engineering | survey

T: 3807 3333 | F: 3287 5461 | www.gassman.com.au

LOGAN & Logan | 176 Business Street, Yatala QLD | PO Box 392, Beenleigh 4207

Client	<b>AVJENNINGS Pty Ltd</b>
Project	<b>DISCLOSURE PLAN</b> <b>LOT 2160</b> (Survey plan: SP280869) <b>RIVERTON</b> <b>Cusack Lane, Jimboomba</b>

Locality	JIMBOOMBA	Issue Date	16/03/2022
Local Govt	LOGAN CITY COUNCIL	Meridian	SP280865
Scale (on A4 original)	1:250	Level Datum	AHD
		Contour Interval	0.2 m Design 0.5m Existing
		Drawn	S.Chowdhury
		Date Drafted	20/08/2021
		Checked	A.Geraghty

**Real Property Description:**  
Lot 701 on SP280865

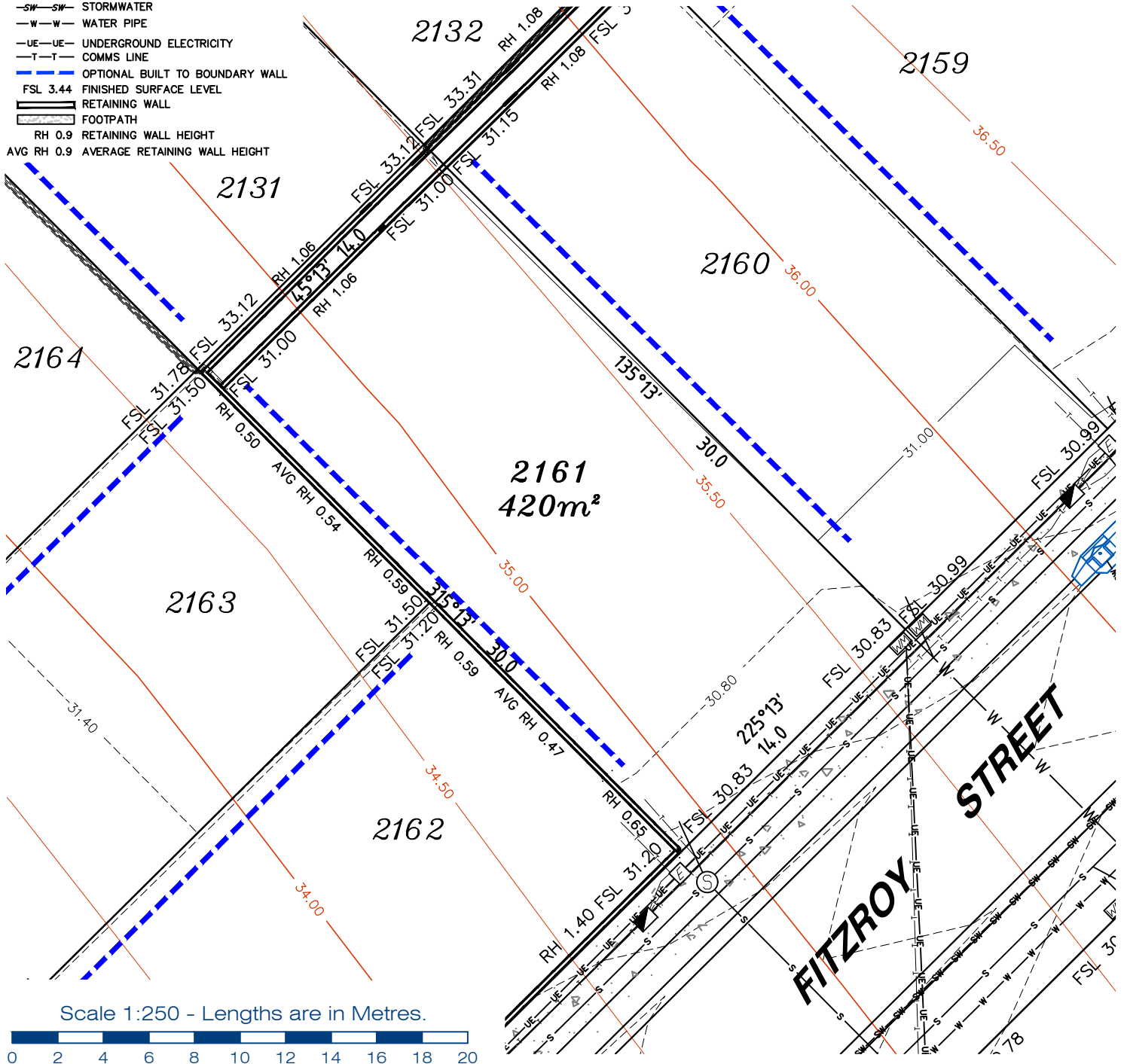
REFERENCE No. **5544-2C**  
PLAN No. **5544 S DC LOT 2160A**

**LEGEND**

- . . SEWER MANHOLE
- . . SEWER MAINTENANCE SHAFT
- . . SEWER RODDING END
- . . STORMWATER MANHOLE
- . . GULLY TRAP
- . . WATER METER
- . . FIRE HYDRANT
- . . STOP VALVE
- . . ELECTRICITY PILLAR
- . . COMMS PIT
- . . RING MAIN UNIT
- . . LIGHT POLE
- DESIGN CONTOURS
- EXISTING SURFACE CONTOURS
- DESIGN FILL
- SEWERAGE
- SW--- SW--- STORMWATER
- W--- W--- WATER PIPE
- UE--- UE--- UNDERGROUND ELECTRICITY
- T--- T--- COMMS LINE
- OPTIONAL BUILT TO BOUNDARY WALL
- FSL 3.44 FINISHED SURFACE LEVEL
- RETAINING WALL
- FOOTPATH
- RH 0.9 RETAINING WALL HEIGHT
- AVG RH 0.9 AVERAGE RETAINING WALL HEIGHT

**Notes:**

- Final areas are subject to design changes, Council approval and field survey and may differ from those shown on this Disclosure Plan.
- Final presentation of areas will comply with requirements of the Registrar of Titles and may vary from the format on this Disclosure Plan
- "The Seller is entitled to make a Permitted Variation (as defined in Special Condition 3 of the contract) to the lot including its location, area, size, dimensions and elevation".
- Design contours are approximate only and may change during construction
- Services have been plotted from design information only and may change during construction
- All earthworks fill to lots has been placed and compacted on Level 1 basis in accordance with Australian Standard AS3798-2007 "Guidelines on earthworks for commercial and residential developments".



Scale 1:250 - Lengths are in Metres.



gassman  
development  
perspectives

est 1985

planning | environment | landscape | engineering | survey

T: 3807 3333 | F: 3287 5461 | www.gassman.com.au

LOGAN & Logan | 176 Business Street, Yatala QLD | PO Box 392, Beenleigh 4207

Client	AVJENNINGS Pty Ltd
Project	<b>DISCLOSURE PLAN</b> <b>LOT 2161</b> (Survey plan: SP280869) <b>RIVERTON</b> <b>Cusack Lane, Jimboomba</b>

Locality	JIMBOOMBA	Issue Date	16/03/2022
Local Govt	LOGAN CITY COUNCIL	Meridian	SP280865
Scale (on A4 original)	1:250	Level Datum	AHD
		Contour Interval	0.2 m Design 0.5m Existing
		Drawn	S.Chowdhury
		Date Drafted	20/08/2021
		Checked	A.Geraghty

**Real Property Description:**  
Lot 701 on SP280865

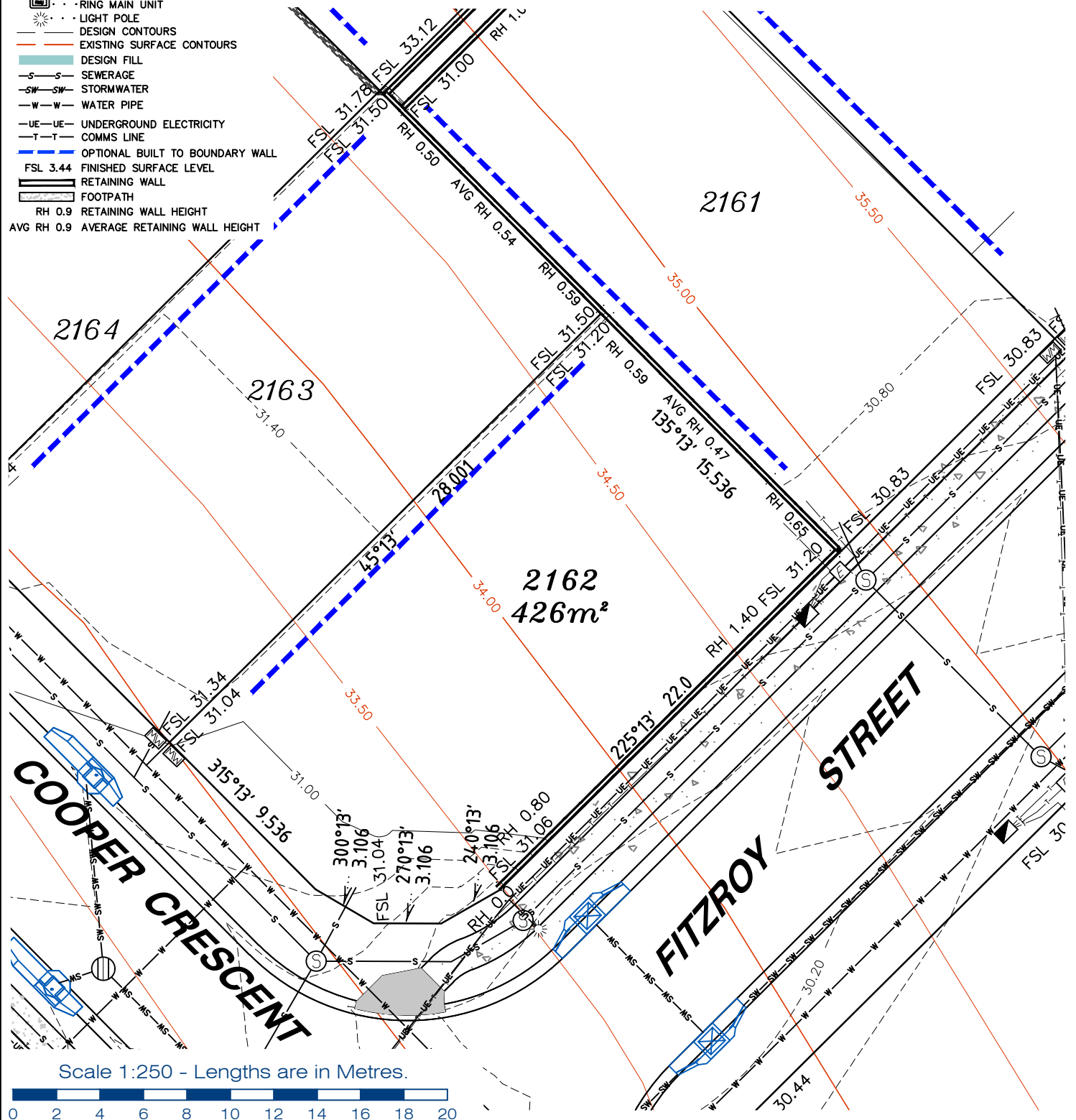
REFERENCE No. **5544-2C**  
PLAN No. **5544 S DC LOT 2161A**

LEGEND

- . . SEWER MANHOLE
- . . SEWER MAINTENANCE SHAFT
- . . SEWER RODDING END
- . . STORMWATER MANHOLE
- . . GULLY TRAP
- . . WATER METER
- . . FIRE HYDRANT
- . . STOP VALVE
- . . ELECTRICITY PILLAR
- . . COMMS PIT
- . . RING MAIN UNIT
- . . LIGHT POLE
- — DESIGN CONTOURS
- — EXISTING SURFACE CONTOURS
- — DESIGN FILL
- S — SEWERAGE
- SW — SW — STORMWATER
- W — W — WATER PIPE
- UE — UE — UNDERGROUND ELECTRICITY
- T — T — COMMS LINE
- — OPTIONAL BUILT TO BOUNDARY WALL
- FSL 3.44 FINISHED SURFACE LEVEL
- — RETAINING WALL
- — FOOTPATH
- RH 0.9 RETAINING WALL HEIGHT
- AVG RH 0.9 AVERAGE RETAINING WALL HEIGHT

Notes:

- Final areas are subject to design changes, Council approval and field survey and may differ from those shown on this Disclosure Plan.
- Final presentation of areas will comply with requirements of the Registrar of Titles and may vary from the format on this Disclosure Plan
- "The Seller is entitled to make a Permitted Variation (as defined in Special Condition 3 of the contract) to the lot including its location, area, size, dimensions and elevation".
- Design contours are approximate only and may change during construction
- Services have been plotted from design information only and may change during construction
- All earthworks fill to lots has been placed and compacted on Level 1 basis in accordance with Australian Standard AS3798-2007 "Guidelines on earthworks for commercial and residential developments".



T: 3807 3333 | F: 3287 5461 | www.gassman.com.au  
 LOGAN & Logan | 76 Business Street, Yatala QLD | PO Box 392, Beenleigh 4207

Client	AVJENNINGS Pty Ltd
Project	<b>DISCLOSURE PLAN</b> <b>LOT 2162</b> (Survey plan: SP280869) <b>RIVERTON</b> <b>Cusack Lane, Jimboomba</b>

Locality	JIMBOOMBA	Issue Date	16/03/2021
Local Govt	LOGAN CITY COUNCIL	Meridian	SP280865
Scale (on A4 original)	1:250	Level Datum	AHD
		Contour Interval	0.2 m Design 0.5m Existing
		Drawn	S.Chowdhury
		Date Drafted	20/08/2021
		Checked	A.Geraghty

**Real Property Description:**  
 Lot 701 on SP280865

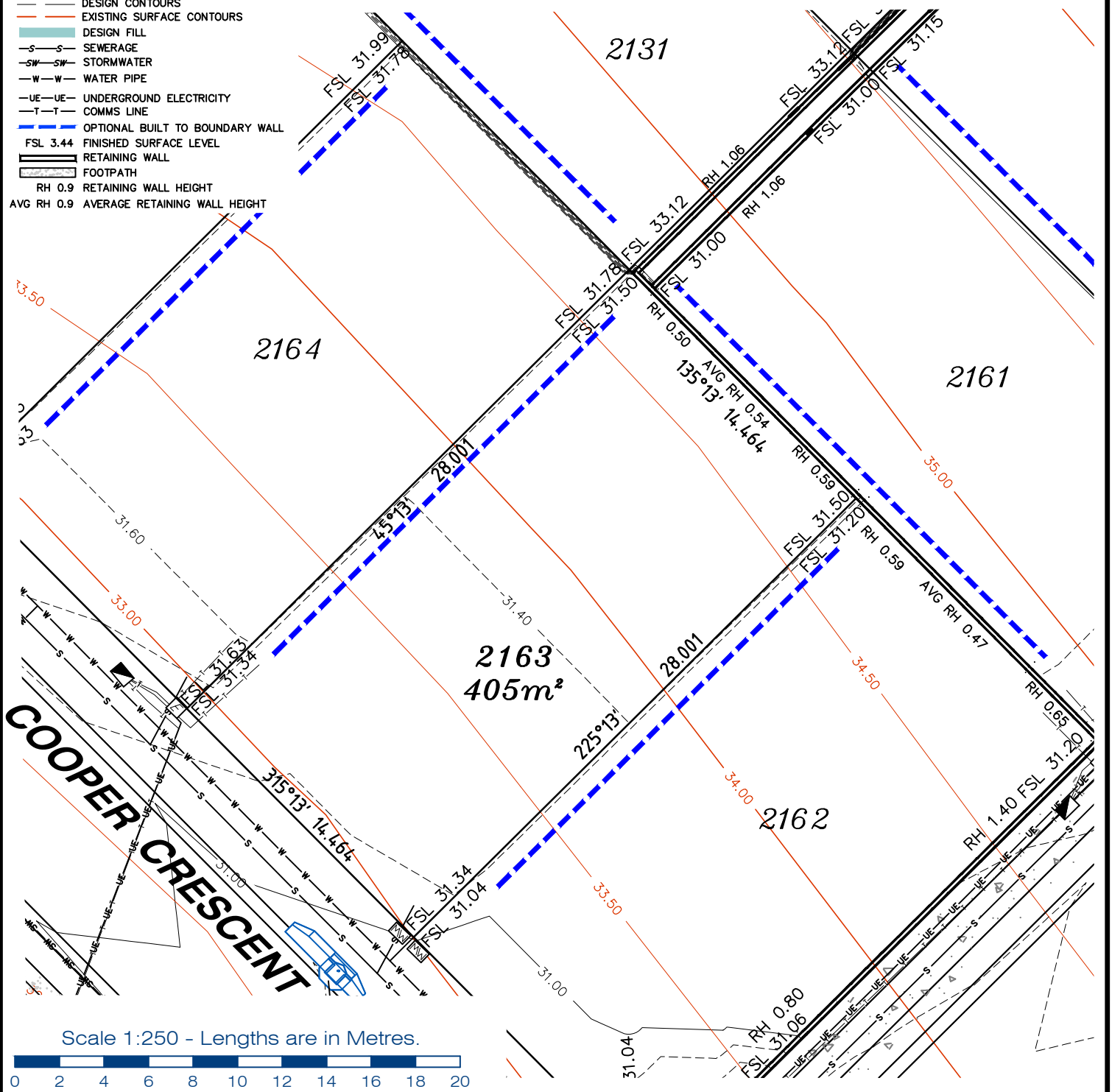
REFERENCE No. **5544-2C**  
 PLAN No. **5544 S DC LOT 2162A**

**LEGEND**

- . . . SEWER MANHOLE
- ⊙ . . . SEWER MAINTENANCE SHAFT
- ⊕ . . . SEWER RODDING END
- ⊖ . . . STORMWATER MANHOLE
- ⊗ . . . GULLY TRAP
- ⊘ . . . WATER METER
- ⊙ . . . FIRE HYDRANT
- ⊙ . . . STOP VALVE
- ⊙ . . . ELECTRICITY PILLAR
- ⊙ . . . COMMS PIT
- ⊙ . . . RING MAIN UNIT
- ⊙ . . . LIGHT POLE
- — — DESIGN CONTOURS
- — — EXISTING SURFACE CONTOURS
- — — DESIGN FILL
- — — SEWERAGE
- — — STORMWATER
- — — WATER PIPE
- — — UNDERGROUND ELECTRICITY
- — — COMMS LINE
- — — OPTIONAL BUILT TO BOUNDARY WALL
- FSL 3.44 FINISHED SURFACE LEVEL
- — — RETAINING WALL
- — — FOOTPATH
- RH 0.9 RETAINING WALL HEIGHT
- AVG RH 0.9 AVERAGE RETAINING WALL HEIGHT

**Notes:**

- Final areas are subject to design changes, Council approval and field survey and may differ from those shown on this Disclosure Plan.
- Final presentation of areas will comply with requirements of the Registrar of Titles and may vary from the format on this Disclosure Plan
- "The Seller is entitled to make a Permitted Variation (as defined in Special Condition 3 of the contract) to the lot including its location, area, size, dimensions and elevation".
- Design contours are approximate only and may change during construction
- Services have been plotted from design information only and may change during construction
- All earthworks fill to lots has been placed and compacted on Level 1 basis in accordance with Australian Standard AS3798-2007 "Guidelines on earthworks for commercial and residential developments".



**gassman development perspectives**  
est 1985

planning | environment | landscape | engineering | survey

T: 3807 3333 | F: 3287 5461 | www.gassman.com.au

LOGAN & Logan | 176 Business Street, Yatala QLD | PO Box 392, Beenleigh 4207

Client	<b>AVJENNINGS Pty Ltd</b>
Project	<b>DISCLOSURE PLAN</b> <b>LOT 2163</b> (Survey plan: SP280869) <b>RIVERTON</b> <b>Cusack Lane, Jimboomba</b>

Locality	JIMBOOMBA	Issue Date	16/03/2022
Local Govt	LOGAN CITY COUNCIL	Meridian	SP280865
Scale (on A4 original)	1:250	Level Datum	AHD
		Contour Interval	0.2m Design 0.5m Existing
		Drawn	S.Chowdhury
		Date Drafted	20/08/2021
		Checked	A.Geraghty

**Real Property Description:**  
Lot 701 on SP280865

REFERENCE No. **5544-2C**  
PLAN No. **5544 S DC LOT 2163A**





**LEGEND**

- . . SEWER MANHOLE
- . . SEWER MAINTENANCE SHAFT
- . . SEWER RODDING END
- . . STORMWATER MANHOLE
- . . GULLY TRAP
- . . WATER METER
- . . FIRE HYDRANT
- . . STOP VALVE
- . . ELECTRICITY PILLAR

- . . COMMS PIT
- . . RING MAIN UNIT
- . . LIGHT POLE

- . . DESIGN CONTOURS
- . . EXISTING SURFACE CONTOURS
- . . DESIGN FILL

- . . SEWERAGE
- . . STORMWATER
- . . WATER PIPE

- . . UNDERGROUND ELECTRICITY
- . . COMMS LINE

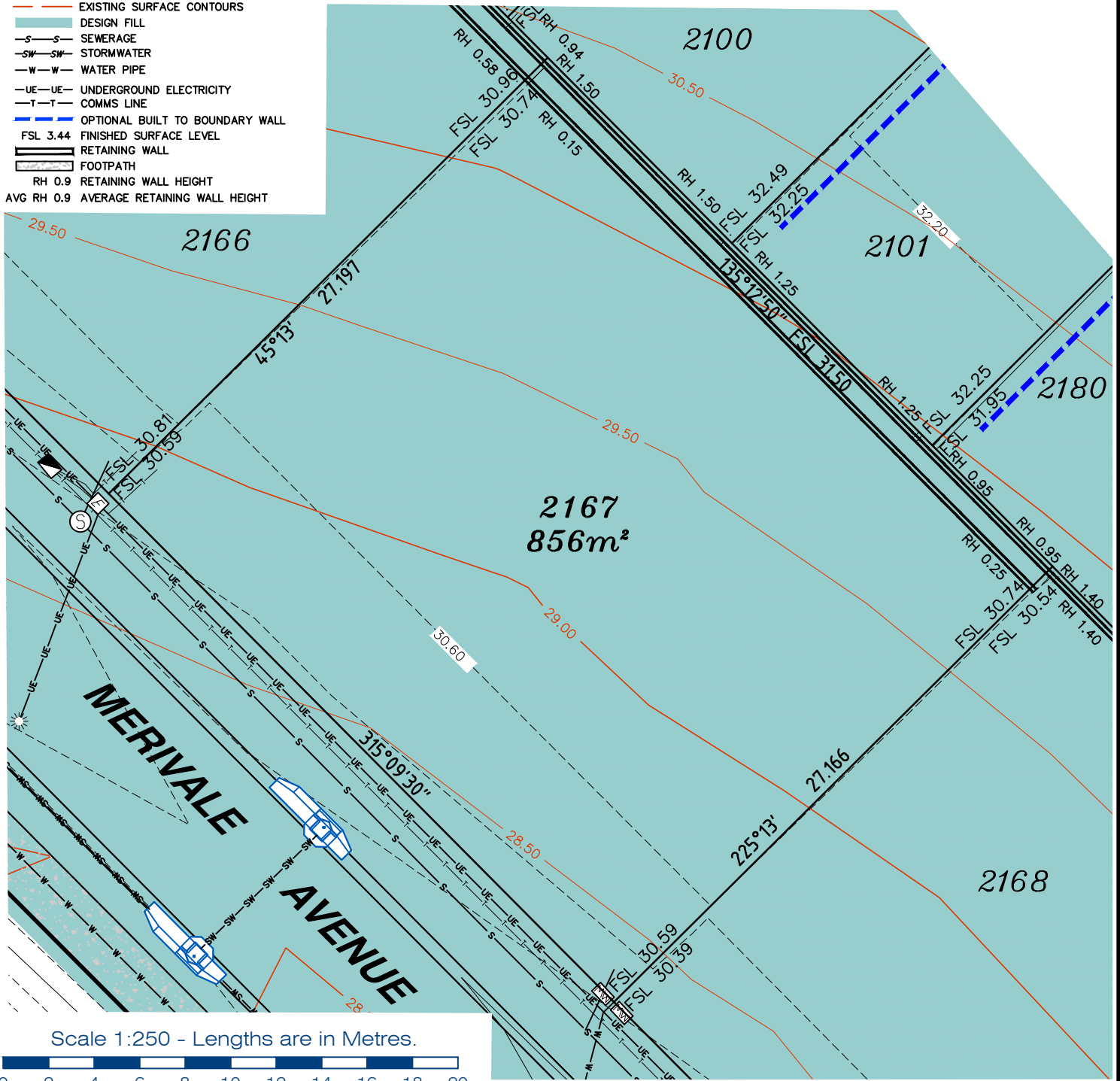
- . . OPTIONAL BUILT TO BOUNDARY WALL
- . . FINISHED SURFACE LEVEL

- . . RETAINING WALL
- . . FOOTPATH

- . . RH 0.9 RETAINING WALL HEIGHT
- . . AVG RH 0.9 AVERAGE RETAINING WALL HEIGHT

**Notes:**

- Final areas are subject to design changes, Council approval and field survey and may differ from those shown on this Disclosure Plan.
- Final presentation of areas will comply with requirements of the Registrar of Titles and may vary from the format on this Disclosure Plan
- "The Seller is entitled to make a Permitted Variation (as defined in Special Condition 3 of the contract) to the lot including its location, area, size, dimensions and elevation".
- Design contours are approximate only and may change during construction
- Services have been plotted from design information only and may change during construction
- All earthworks fill to lots has been placed and compacted on Level 1 basis in accordance with Australian Standard AS3798-2007 "Guidelines on earthworks for commercial and residential developments".



Scale 1:250 - Lengths are in Metres.

**gassman**  
**development**  
**perspectives**

est 1985

planning | environment | landscape | engineering | survey

T: 3807 3333 | F: 3287 5461 | www.gassman.com.au

LOGAN & Logan | 76 Business Street, Yatala QLD | PO Box 392, Beenleigh 4207

Client	<b>AVJENNINGS Pty Ltd</b>
Project	<b>DISCLOSURE PLAN</b> <b>LOT 2167</b> (Survey plan: SP280869) <b>RIVERTON</b> <b>Cusack Lane, Jimboomba</b>

Locality	JIMBOOMBA	Issue Date	16/03/2022
Local Govt	LOGAN CITY COUNCIL	Meridian	SP280865
Scale (on A4 original)	1:250	Level Datum	AHD
		Contour Interval	0.2 m Design 0.5m Existing
		Drawn	S.Chowdhury
		Date Drafted	10/07/2021
		Checked	A.Geraghty

**Real Property Description:**  
Lot 701 on SP280865

REFERENCE No. **5544-2C**  
PLAN No. **5544 S DC LOT 2167A**

**LEGEND**

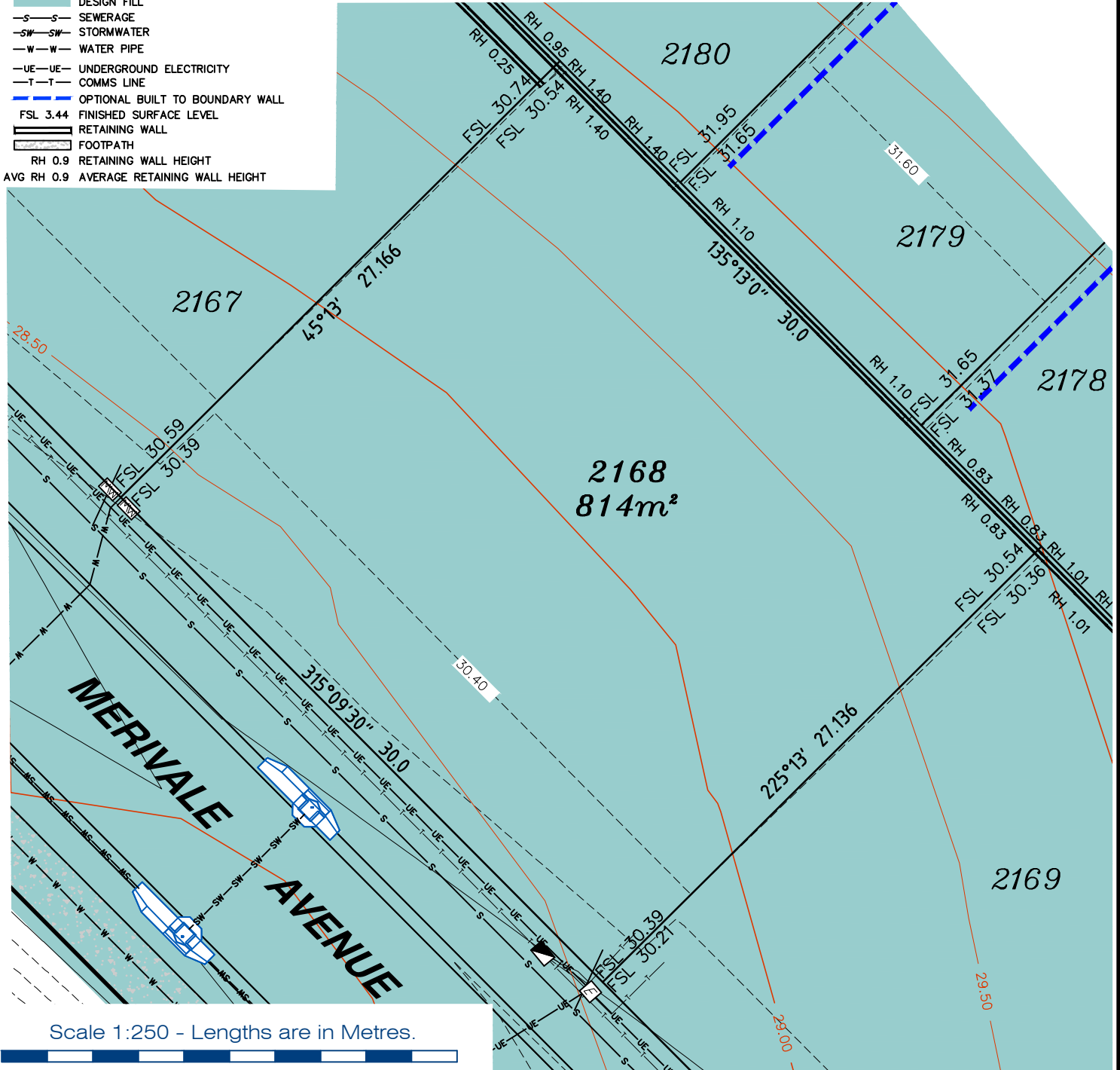
- . . SEWER MANHOLE
- . . SEWER MAINTENANCE SHAFT
- . . SEWER RODDING END
- . . STORMWATER MANHOLE
- . . GULLY TRAP
- . . WATER METER
- . . FIRE HYDRANT
- . . STOP VALVE
- . . ELECTRICITY PILLAR

- . . COMMS PIT
- . . RING MAIN UNIT
- . . LIGHT POLE

- DESIGN CONTOURS
- EXISTING SURFACE CONTOURS
- DESIGN FILL
- SEWERAGE
- STORMWATER
- WATER PIPE
- UNDERGROUND ELECTRICITY
- COMMS LINE
- OPTIONAL BUILT TO BOUNDARY WALL
- FSL 3.44 FINISHED SURFACE LEVEL
- RETAINING WALL
- FOOTPATH
- RH 0.9 RETAINING WALL HEIGHT
- AVG RH 0.9 AVERAGE RETAINING WALL HEIGHT

**Notes:**

- Final areas are subject to design changes, Council approval and field survey and may differ from those shown on this Disclosure Plan.
- Final presentation of areas will comply with requirements of the Registrar of Titles and may vary from the format on this Disclosure Plan
- "The Seller is entitled to make a Permitted Variation (as defined in Special Condition 3 of the contract) to the lot including its location, area, size, dimensions and elevation".
- Design contours are approximate only and may change during construction
- Services have been plotted from design information only and may change during construction
- All earthworks fill to lots has been placed and compacted on Level 1 basis in accordance with Australian Standard AS3798-2007 "Guidelines on earthworks for commercial and residential developments".



Scale 1:250 - Lengths are in Metres.



T: 3807 3333 | F: 3287 5461 | www.gassman.com.au  
 LOGAN & Logan | 76 Business Street, Yatala QLD | PO Box 392, Beenleigh 4207

Client	<b>AVJENNINGS Pty Ltd</b>
Project	<b>DISCLOSURE PLAN</b> <b>LOT 2168</b> (Survey plan: SP280869) <b>RIVERTON</b> <b>Cusack Lane, Jimboomba</b>

Locality	JIMBOOMBA	Issue Date	16/03/2022
Local Govt	LOGAN CITY COUNCIL	Meridian	SP280865
Scale (on A4 original)	1:250	Level Datum	AHD
		Contour Interval	0.2 m Design 0.5m Existing
		Drawn	S.Chowdhury
		Date Drafted	10/07/2021
		Checked	A.Geraghty

**Real Property Description:**  
 Lot 701 on SP280865

**REFERENCE No. 5544-2C**  
**PLAN No. 5544 S DC LOT 2168B**

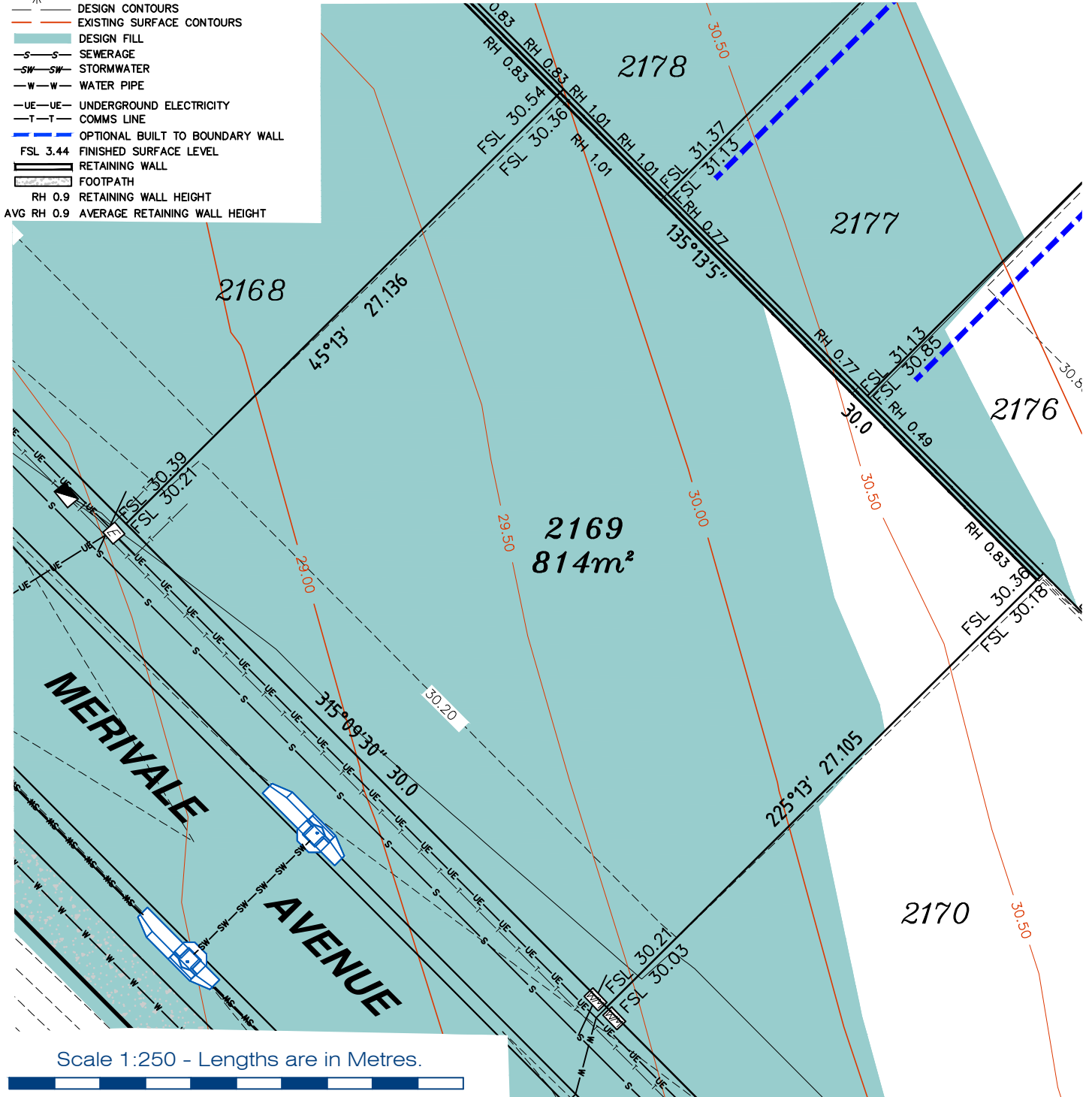


**LEGEND**

- . . SEWER MANHOLE
- . . SEWER MAINTENANCE SHAFT
- . . SEWER RODDING END
- . . STORMWATER MANHOLE
- . . GULLY TRAP
- . . WATER METER
- . . FIRE HYDRANT
- . . STOP VALVE
- . . ELECTRICITY PILLAR
- . . COMMS PIT
- . . RING MAIN UNIT
- . . LIGHT POLE
- . . DESIGN CONTOURS
- . . EXISTING SURFACE CONTOURS
- . . DESIGN FILL
- . . SEWERAGE
- . . STORMWATER
- . . WATER PIPE
- . . UNDERGROUND ELECTRICITY
- . . COMMS LINE
- . . OPTIONAL BUILT TO BOUNDARY WALL
- . . FSL 3.44 FINISHED SURFACE LEVEL
- . . RETAINING WALL
- . . FOOTPATH
- . . RH 0.9 RETAINING WALL HEIGHT
- . . AVG RH 0.9 AVERAGE RETAINING WALL HEIGHT

**Notes:**

- Final areas are subject to design changes, Council approval and field survey and may differ from those shown on this Disclosure Plan.
- Final presentation of areas will comply with requirements of the Registrar of Titles and may vary from the format on this Disclosure Plan
- "The Seller is entitled to make a Permitted Variation (as defined in Special Condition 3 of the contract) to the lot including its location, area, size, dimensions and elevation".
- Design contours are approximate only and may change during construction
- Services have been plotted from design information only and may change during construction
- All earthworks fill to lots has been placed and compacted on Level 1 basis in accordance with Australian Standard AS3798-2007 "Guidelines on earthworks for commercial and residential developments".



**gassman development perspectives**  
est 1985

planning | environment | landscape | engineering | survey

T: 3807 3333 | F: 3287 5461 | www.gassman.com.au

LOGAN & Logan | 176 Business Street, Yatala QLD | PO Box 392, Beenleigh 4207

Client	<b>AVJENNINGS Pty Ltd</b>
Project	<b>DISCLOSURE PLAN</b> <b>LOT 2169</b> (Survey plan: SP280869) <b>RIVERTON</b> <b>Cusack Lane, Jimboomba</b>

Locality	JIMBOOMBA	Issue Date	16/03/2022
Local Govt	LOGAN CITY COUNCIL	Meridian	SP280865
Scale (on A4 original)	1:250	Level Datum	AHD
		Contour Interval	0.2 m Design 0.5m Existing
		Drawn	S.Chowdhury
		Date Drafted	10/08/2021
		Checked	A.Geraghty

**Real Property Description:**  
Lot 701 on SP280865

REFERENCE No. **5544-2C**  
PLAN No. **5544 S DC LOT 2169A**

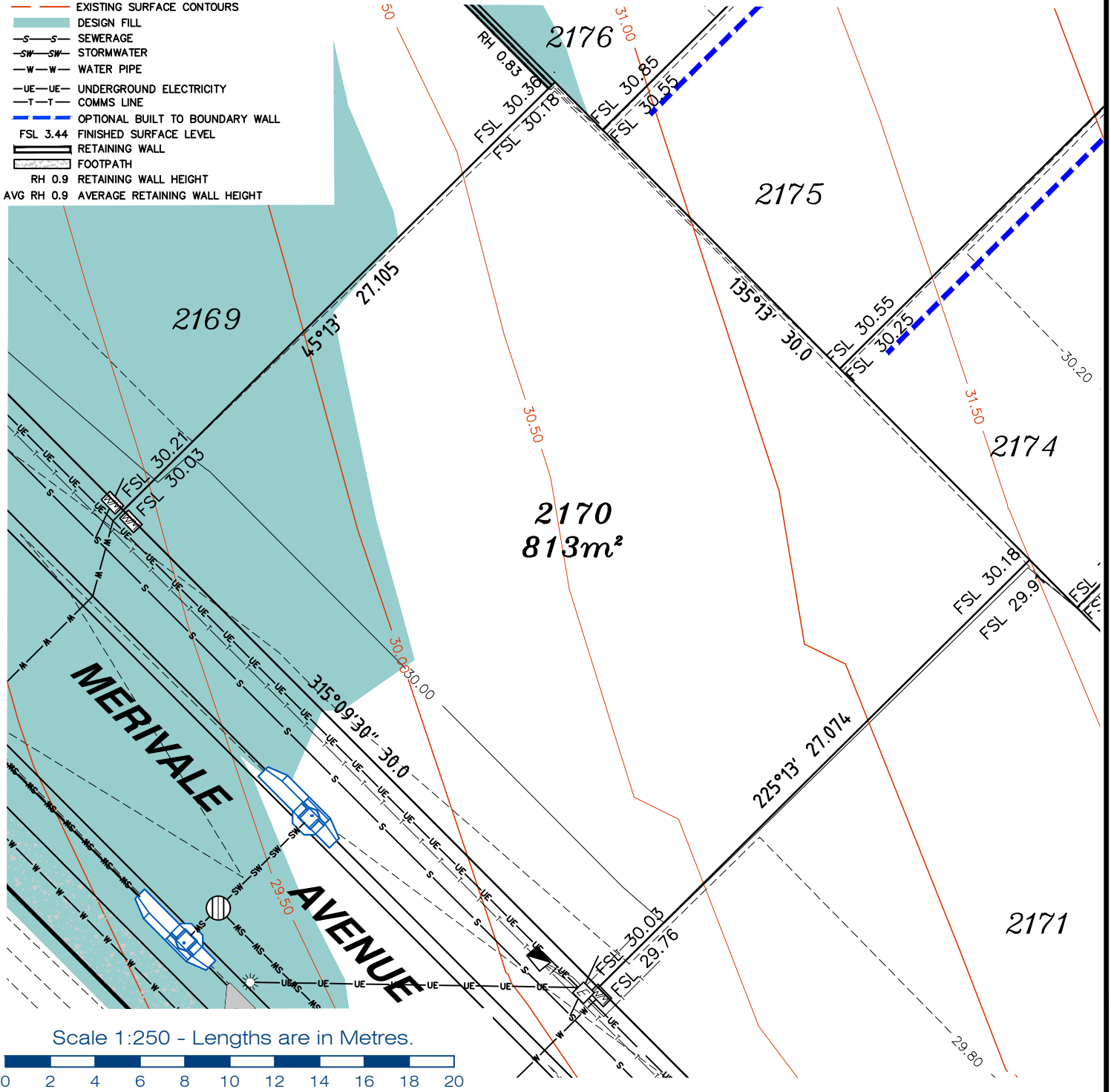
**LEGEND**

- ⊙ . . SEWER MANHOLE
- ⊙ . . SEWER MAINTENANCE SHAFT
- ⊙ . . SEWER RODDING END
- ⊙ . . STORMWATER MANHOLE
- ⊙ . . GULLY TRAP
- ⊙ . . WATER METER
- ⊙ . . FIRE HYDRANT
- ⊙ . . STOP VALVE
- ⊙ . . ELECTRICITY PILLAR

- ⊙ . . COMMS PIT
- ⊙ . . RING MAIN UNIT
- ⊙ . . LIGHT POLE
- — — DESIGN CONTOURS
- — — EXISTING SURFACE CONTOURS
- — — DESIGN FILL
- — — SEWERAGE
- — — STORMWATER
- — — WATER PIPE
- — — UNDERGROUND ELECTRICITY
- — — COMMS LINE
- — — OPTIONAL BUILT TO BOUNDARY WALL
- FSL 3.44 FINISHED SURFACE LEVEL
- — — RETAINING WALL
- — — FOOTPATH
- RH 0.9 RETAINING WALL HEIGHT
- AVG RH 0.9 AVERAGE RETAINING WALL HEIGHT

**Notes:**

- Final areas are subject to design changes, Council approval and field survey and may differ from those shown on this Disclosure Plan.
- Final presentation of areas will comply with requirements of the Registrar of Titles and may vary from the format on this Disclosure Plan
- "The Seller is entitled to make a Permitted Variation (as defined in Special Condition 3 of the contract) to the lot including its location, area, size, dimensions and elevation".
- Design contours are approximate only and may change during construction
- Services have been plotted from design information only and may change during construction
- All earthworks fill to lots has been placed and compacted on Level 1 basis in accordance with Australian Standard AS3798-2007 "Guidelines on earthworks for commercial and residential developments".



**gassman development perspectives**  
est 1985

planning | environment | landscape | engineering | survey

T: 3807 3333 | F: 3287 5461 | www.gassman.com.au

LOGAN & Logan | 176 Business Street, Yatala QLD | PO Box 392, Beenleigh 4207

Client	<b>AVJENNINGS Pty Ltd</b>
Project	<b>DISCLOSURE PLAN</b> <b>LOT 2170</b> (Survey plan: SP280869) <b>RIVERTON</b> <b>Cusack Lane, Jimboomba</b>

Locality	JIMBOOMBA	Issue Date	16/03/2022
Local Govt	LOGAN CITY COUNCIL	Meridian	SP280865
Scale (on A4 original)	1:250	Level Datum	AHD
		Contour Interval	0.2 m Design 0.5m Existing
		Drawn	S.Chowdhury
		Date Drafted	10/08/2021
		Checked	A.Geraghty

**Real Property Description:**  
Lot 701 on SP280865

**REFERENCE No. 5544-2C**  
**PLAN No. 5544 S DC LOT 2170A**

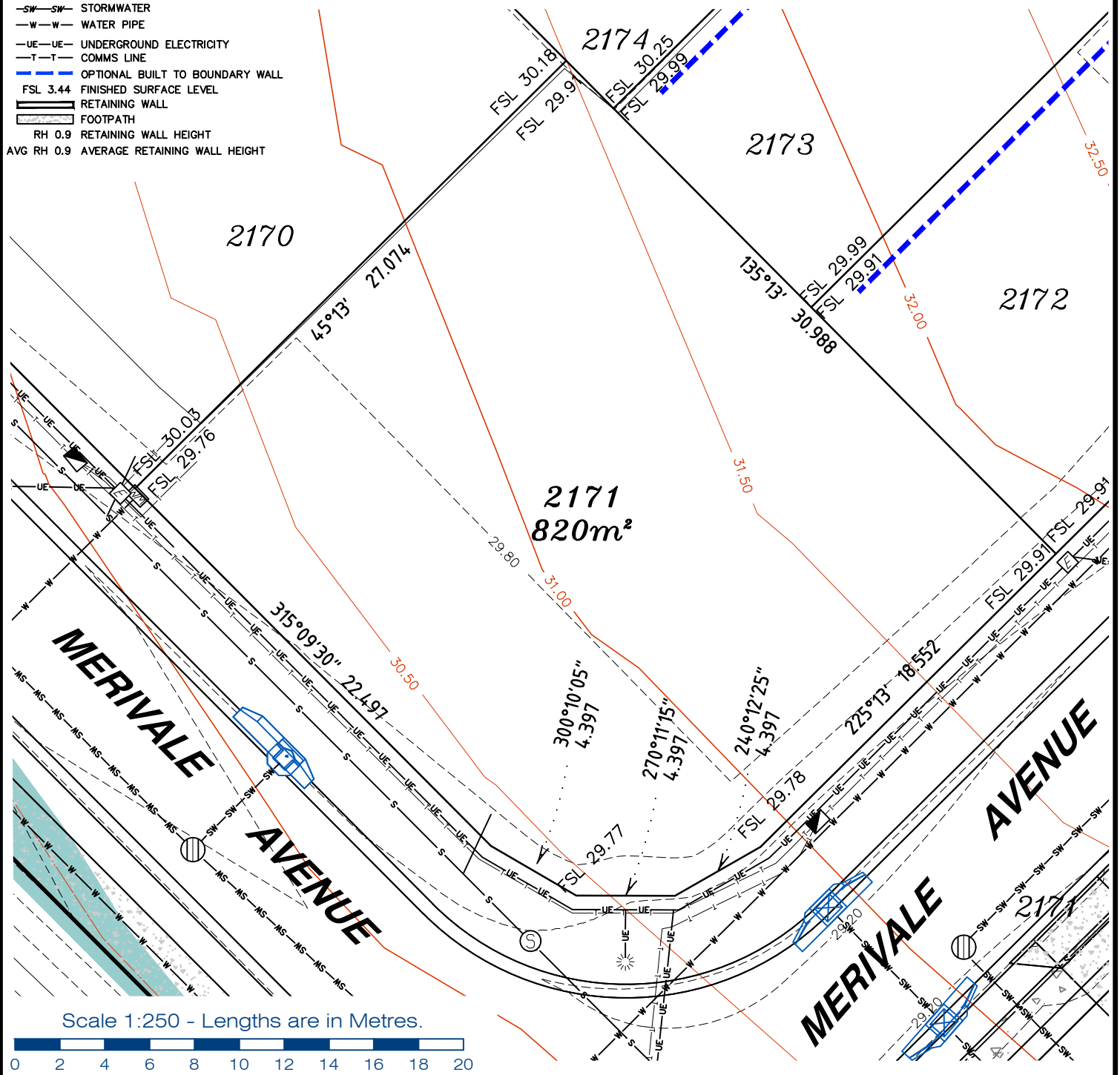
LEGEND

- . SEWER MANHOLE
- . SEWER MAINTENANCE SHAFT
- . SEWER RODDING END
- . STORMWATER MANHOLE
- . GULLY TRAP
- . WATER METER
- . FIRE HYDRANT
- . STOP VALVE
- . ELECTRICITY PILLAR

- . COMMS PIT
- . RING MAIN UNIT
- . LIGHT POLE
- DESIGN CONTOURS
- EXISTING SURFACE CONTOURS
- DESIGN FILL
- SEWERAGE
- STORMWATER
- WATER PIPE
- UNDERGROUND ELECTRICITY
- COMMS LINE
- OPTIONAL BUILT TO BOUNDARY WALL
- FSL 3.44 FINISHED SURFACE LEVEL
- RETAINING WALL
- FOOTPATH
- RH 0.9 RETAINING WALL HEIGHT
- AVG RH 0.9 AVERAGE RETAINING WALL HEIGHT

**Notes:**

- Final areas are subject to design changes, Council approval and field survey and may differ from those shown on this Disclosure Plan.
- Final presentation of areas will comply with requirements of the Registrar of Titles and may vary from the format on this Disclosure Plan
- "The Seller is entitled to make a Permitted Variation (as defined in Special Condition 3 of the contract) to the lot including its location, area, size, dimensions and elevation".
- Design contours are approximate only and may change during construction
- Services have been plotted from design information only and may change during construction
- All earthworks fill to lots has been placed and compacted on Level 1 basis in accordance with Australian Standard AS3798-2007 "Guidelines on earthworks for commercial and residential developments".



gassman  
development  
perspectives

est 1985

planning | environment | landscape | engineering | survey

T: 3807 3333 | F: 3287 5461 | www.gassman.com.au

LOGAN & Logan | 176 Business Street, Yatala QLD | PO Box 392, Beenleigh 4207

Client	AVJENNINGS Pty Ltd
Project	<b>DISCLOSURE PLAN</b> <b>LOT 2171</b> (Survey plan: SP280869) <b>RIVERTON</b> <b>Cusack Lane, Jimboomba</b>

Locality	JIMBOOMBA	Issue Date	20/09/2021
Local Govt	LOGAN CITY COUNCIL	Meridian	SP280865
Scale (on A4 original)	1:250	Level Datum	AHD
		Contour Interval	0.2 m Design 0.5m Existing
		Drawn	S.Chowdhury
		Date Drafted	10/07/2021
		Checked	A.Geraghty

**Real Property Description:**  
Lot 701 on SP250865

REFERENCE No. **5544-2C**  
PLAN No. **5544 S DC LOT 2171**

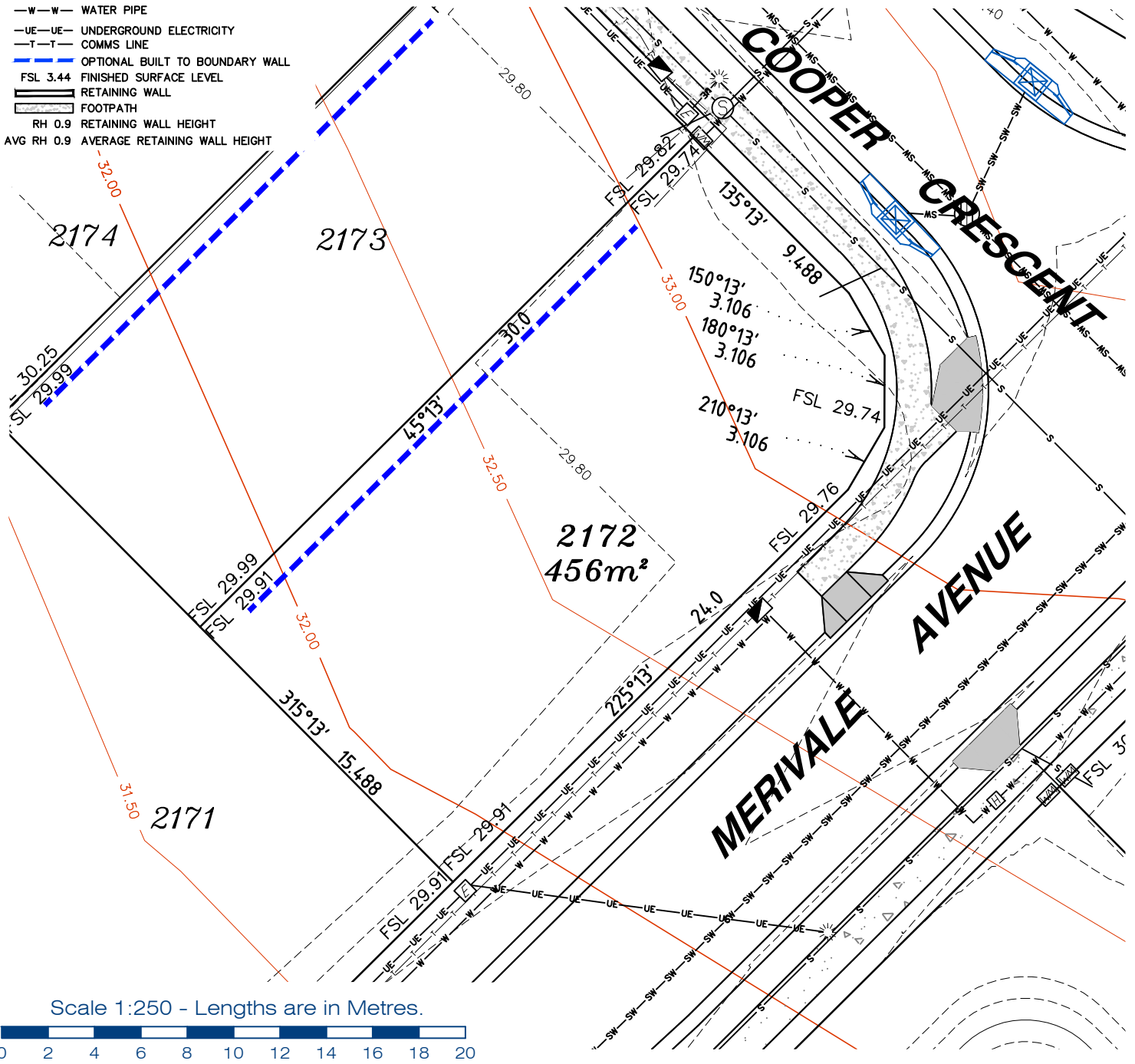


**LEGEND**

- . . SEWER MANHOLE
- . . SEWER MAINTENANCE SHAFT
- . . SEWER RODDING END
- . . STORMWATER MANHOLE
- . . GULLY TRAP
- . . WATER METER
- . . FIRE HYDRANT
- . . STOP VALVE
- . . ELECTRICITY PILLAR
- . . COMMS PIT
- . . RING MAIN UNIT
- . . LIGHT POLE
- . . DESIGN CONTOURS
- . . EXISTING SURFACE CONTOURS
- . . DESIGN FILL
- . . SEWERAGE
- . . STORMWATER
- . . WATER PIPE
- . . UNDERGROUND ELECTRICITY
- . . COMMS LINE
- . . OPTIONAL BUILT TO BOUNDARY WALL
- FSL 3.44 FINISHED SURFACE LEVEL
- . . RETAINING WALL
- . . FOOTPATH
- RH 0.9 RETAINING WALL HEIGHT
- AVG RH 0.9 AVERAGE RETAINING WALL HEIGHT

**Notes:**

- Final areas are subject to design changes, Council approval and field survey and may differ from those shown on this Disclosure Plan.
- Final presentation of areas will comply with requirements of the Registrar of Titles and may vary from the format on this Disclosure Plan
- "The Seller is entitled to make a Permitted Variation (as defined in Special Condition 3 of the contract) to the lot including its location, area, size, dimensions and elevation".
- Design contours are approximate only and may change during construction
- Services have been plotted from design information only and may change during construction
- All earthworks fill to lots has been placed and compacted on Level 1 basis in accordance with Australian Standard AS3798-2007 "Guidelines on earthworks for commercial and residential developments".



gassman  
development  
perspectives

est 1985

planning | environment | landscape | engineering | survey

T: 3807 3333 | F: 3287 5461 | www.gassman.com.au

LOGAN & Logan | 76 Business Street, Yatala QLD | PO Box 392, Beenleigh 4207

Client	<b>AVJENNINGS Pty Ltd</b>
Project	<b>DISCLOSURE PLAN</b> <b>LOT 2172</b> (Survey plan: SP280869) <b>RIVERTON</b> <b>Cusack Lane, Jimboomba</b>

Locality	JIMBOOMBA	Issue Date	16/03/2021
Local Govt	LOGAN CITY COUNCIL	Meridian	SP280865
Scale (on A4 original)	1:250	Level Datum	AHD
		Contour Interval	0.2 m Design 0.5m Existing
		Drawn	S.Chowdhury
		Date Drafted	20/08/2021
		Checked	A.Geraghty

**Real Property Description:**  
Lot 701 on SP280865

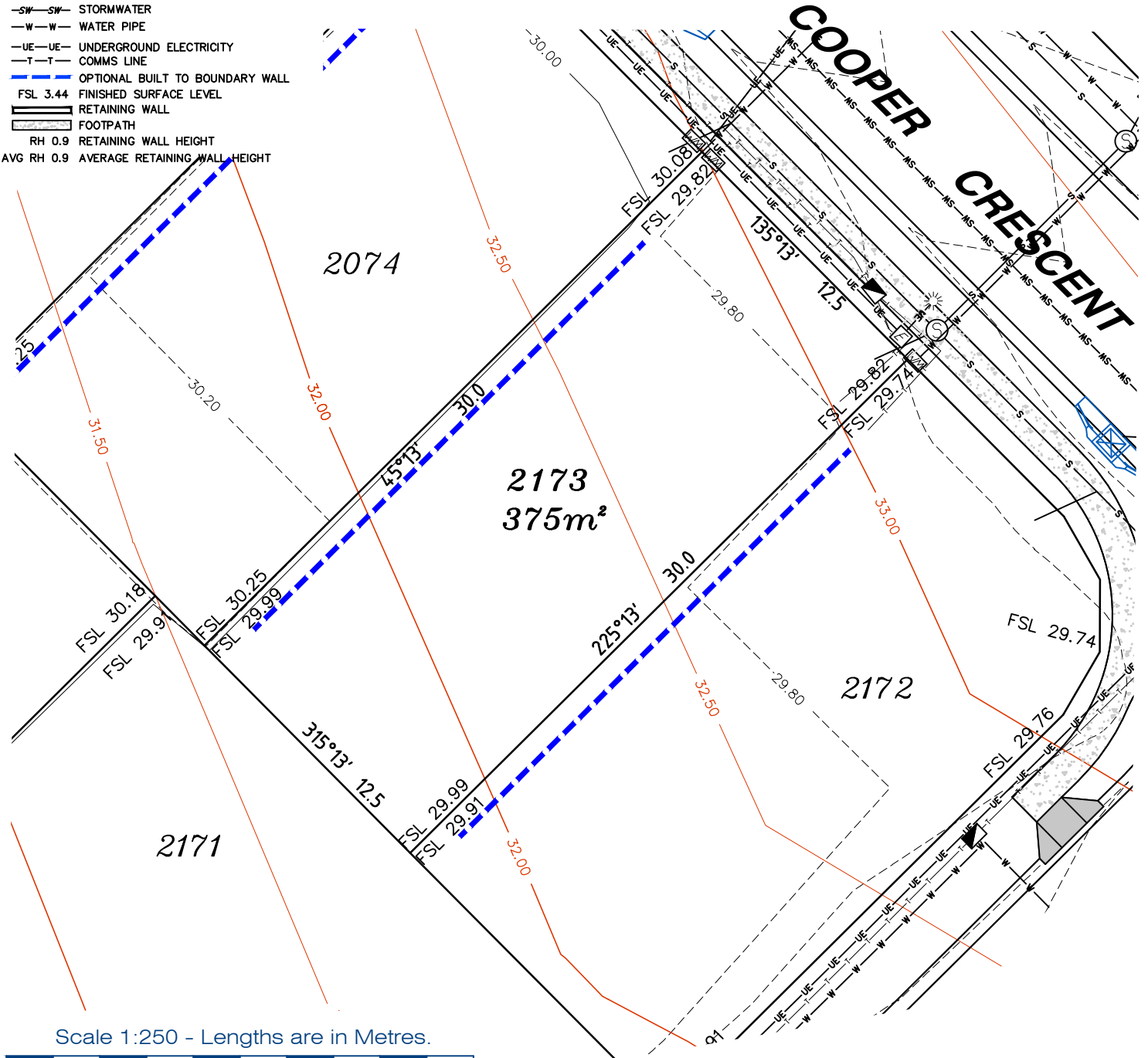
REFERENCE No. **5544-2C**  
PLAN No. **5544 S DC LOT 2172A**

**LEGEND**

- ⊙ . . SEWER MANHOLE
- ⊕ . . SEWER MAINTENANCE SHAFT
- ⊙ . . SEWER RODDING END
- ⊕ . . STORMWATER MANHOLE
- ⊕ . . GULLY TRAP
- ⊕ . . WATER METER
- ⊕ . . FIRE HYDRANT
- ⊕ . . STOP VALVE
- ⊕ . . ELECTRICITY PILLAR
- ⊕ . . COMMS PIT
- ⊕ . . RING MAIN UNIT
- ⊕ . . LIGHT POLE
- — — DESIGN CONTOURS
- — — EXISTING SURFACE CONTOURS
- — — DESIGN FILL
- S—S— SEWERAGE
- SW—SW— STORMWATER
- W—W— WATER PIPE
- UE—UE— UNDERGROUND ELECTRICITY
- T—T— COMMS LINE
- — — OPTIONAL BUILT TO BOUNDARY WALL
- FSL 3.44 FINISHED SURFACE LEVEL
- — — RETAINING WALL
- — — FOOTPATH
- RH 0.9 RETAINING WALL HEIGHT
- AVG RH 0.9 AVERAGE RETAINING WALL HEIGHT

**Notes:**

- Final areas are subject to design changes, Council approval and field survey and may differ from those shown on this Disclosure Plan.
- Final presentation of areas will comply with requirements of the Registrar of Titles and may vary from the format on this Disclosure Plan
- "The Seller is entitled to make a Permitted Variation (as defined in Special Condition 3 of the contract) to the lot including its location, area, size, dimensions and elevation".
- Design contours are approximate only and may change during construction
- Services have been plotted from design information only and may change during construction
- All earthworks fill to lots has been placed and compacted on Level 1 basis in accordance with Australian Standard AS3798-2007 "Guidelines on earthworks for commercial and residential developments".



Scale 1:250 - Lengths are in Metres.



**gassman development perspectives**  
 est 1985  
 planning | environment | landscape | engineering | survey  
 T: 3807 3333 | F: 3287 5461 | www.gassman.com.au  
 LOGAN & Logan | 176 Business Street, Yatala QLD | PO Box 392, Beenleigh 4207

Client	<b>AVJENNINGS Pty Ltd</b>
Project	<b>DISCLOSURE PLAN</b> <b>LOT 2173</b> (Survey plan: SP280869) <b>RIVERTON</b> <b>Cusack Lane, Jimboomba</b>

Locality	JIMBOOMBA	Issue Date	20/09/2021
Local Govt	LOGAN CITY COUNCIL	Meridian	SP280865
Scale (on A4 original)	1:250	Level Datum	AHD
		Contour Interval	0.2 m Design 0.5m Existing
		Drawn	S.Chowdhury
		Date Drafted	20/08/2021
		Checked	A.Geraghty

**Real Property Description:**  
 Lot 701 on SP280865

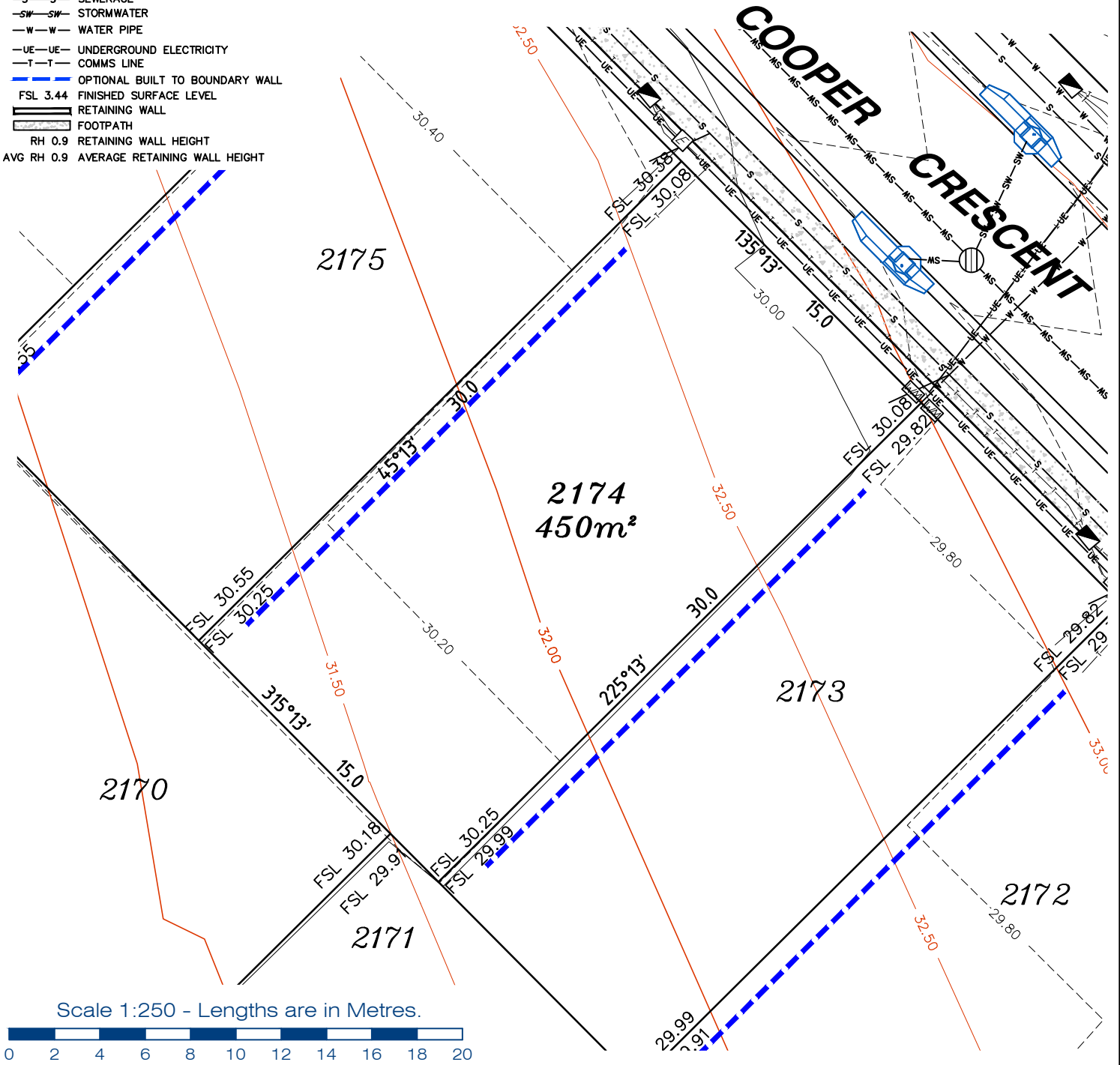
**REFERENCE No. 5544-2C**  
**PLAN No. 5544 S DC LOT 2173**

**LEGEND**

- ⊙ . . SEWER MANHOLE
- ⊕ . . SEWER MAINTENANCE SHAFT
- ⊙ . . SEWER RODDING END
- ⊕ . . STORMWATER MANHOLE
- ⊕ . . GULLY TRAP
- ⊕ . . WATER METER
- ⊕ . . FIRE HYDRANT
- ⊕ . . STOP VALVE
- ⊕ . . ELECTRICITY PILLAR
- ⊕ . . COMMS PIT
- ⊕ . . RING MAIN UNIT
- ⊕ . . LIGHT POLE
- . . DESIGN CONTOURS
- . . EXISTING SURFACE CONTOURS
- . . DESIGN FILL
- S—S— . . SEWERAGE
- SW—SW— . . STORMWATER
- W—W— . . WATER PIPE
- UE—UE— . . UNDERGROUND ELECTRICITY
- T—T— . . COMMS LINE
- . . OPTIONAL BUILT TO BOUNDARY WALL
- FSL 3.44 . . FINISHED SURFACE LEVEL
- . . RETAINING WALL
- . . FOOTPATH
- RH 0.9 . . RETAINING WALL HEIGHT
- AVG RH 0.9 . . AVERAGE RETAINING WALL HEIGHT

**Notes:**

- Final areas are subject to design changes, Council approval and field survey and may differ from those shown on this Disclosure Plan.
- Final presentation of areas will comply with requirements of the Registrar of Titles and may vary from the format on this Disclosure Plan
- "The Seller is entitled to make a Permitted Variation (as defined in Special Condition 3 of the contract) to the lot including its location, area, size, dimensions and elevation".
- Design contours are approximate only and may change during construction
- Services have been plotted from design information only and may change during construction
- All earthworks fill to lots has been placed and compacted on Level 1 basis in accordance with Australian Standard AS3798-2007 "Guidelines on earthworks for commercial and residential developments".



Scale 1:250 - Lengths are in Metres.



gassman  
development  
perspectives

est 1985

planning | environment | landscape | engineering | survey

T: 3807 3333 | F: 3287 5461 | www.gassman.com.au

LOGAN & Logan | 176 Business Street, Yatala QLD | PO Box 392, Beenleigh 4207

Client	<b>AVJENNINGS Pty Ltd</b>
Project	<b>DISCLOSURE PLAN</b> <b>LOT 2174</b> (Survey plan: SP280869) <b>RIVERTON</b> <b>Cusack Lane, Jimboomba</b>

Locality	JIMBOOMBA	Issue Date	16/03/2021
Local Govt	LOGAN CITY COUNCIL	Meridian	SP280865
Scale (on A4 original)	1:250	Level Datum	AHD
		Contour Interval	0.2 m Design 0.5m Existing
		Drawn	S.Chowdhury
		Date Drafted	20/08/2021
		Checked	A.Geraghty

**Real Property Description:**  
Lot 701 on SP280865

REFERENCE No. **5544-2C**  
PLAN No. **5544 S DC LOT 2174A**



**LEGEND**

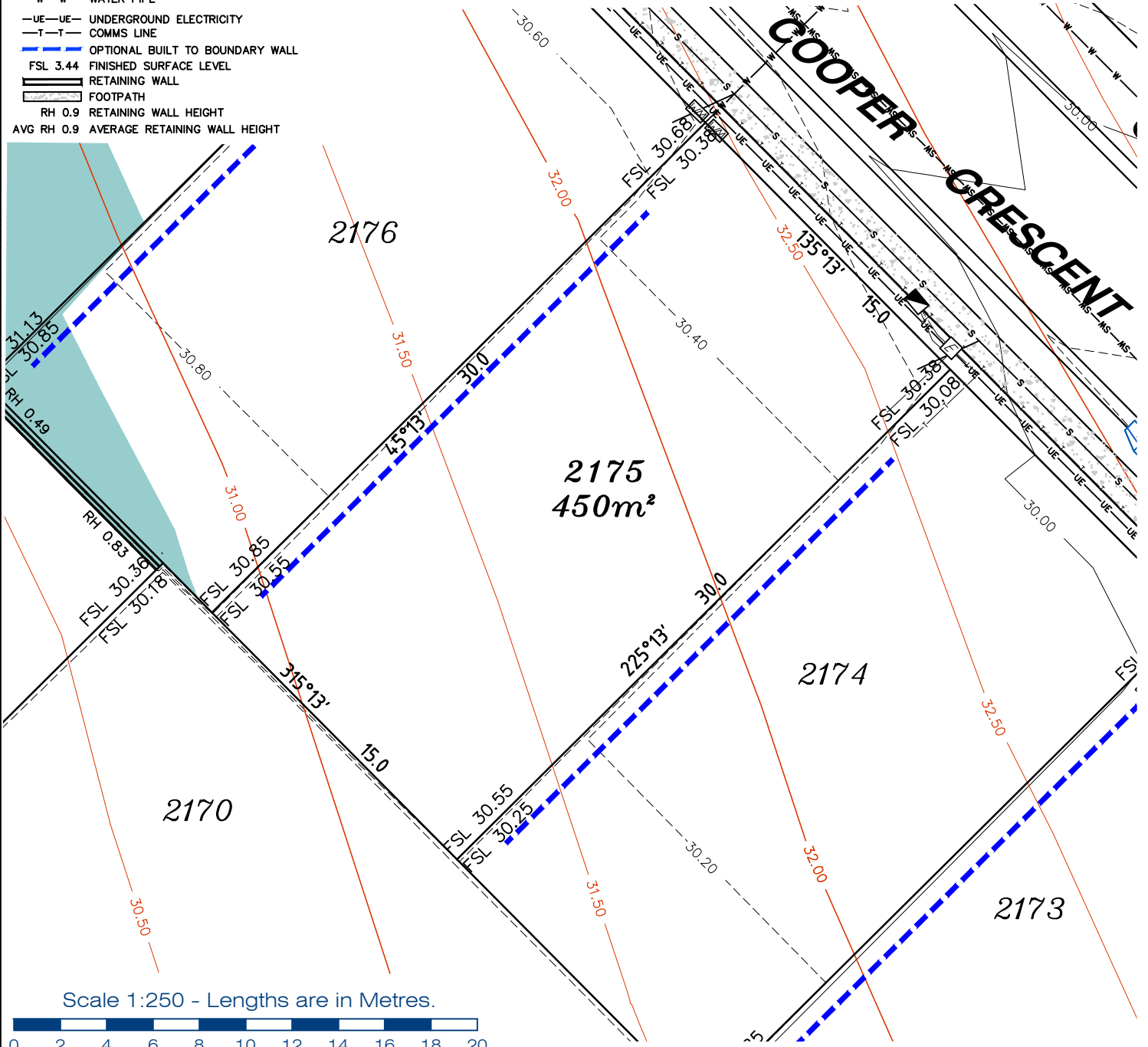
- . . SEWER MANHOLE
- . . SEWER MAINTENANCE SHAFT
- . . SEWER RODDING END
- . . STORMWATER MANHOLE
- . . GULLY TRAP
- . . WATER METER
- . . FIRE HYDRANT
- . . STOP VALVE
- . . ELECTRICITY PILLAR

- . . COMMS PIT
- . . RING MAIN UNIT
- . . LIGHT POLE
- . . DESIGN CONTOURS
- . . EXISTING SURFACE CONTOURS
- . . DESIGN FILL
- . . SEWERAGE
- . . STORMWATER
- . . WATER PIPE
- . . UNDERGROUND ELECTRICITY
- . . COMMS LINE
- . . OPTIONAL BUILT TO BOUNDARY WALL

- FSL 3.44 FINISHED SURFACE LEVEL
- . . RETAINING WALL
- . . FOOTPATH
- RH 0.9 RETAINING WALL HEIGHT
- AVG RH 0.9 AVERAGE RETAINING WALL HEIGHT

**Notes:**

- Final areas are subject to design changes, Council approval and field survey and may differ from those shown on this Disclosure Plan.
- Final presentation of areas will comply with requirements of the Registrar of Titles and may vary from the format on this Disclosure Plan
- "The Seller is entitled to make a Permitted Variation (as defined in Special Condition 3 of the contract) to the lot including its location, area, size, dimensions and elevation".
- Design contours are approximate only and may change during construction
- Services have been plotted from design information only and may change during construction
- All earthworks fill to lots has been placed and compacted on Level 1 basis in accordance with Australian Standard AS3798-2007 "Guidelines on earthworks for commercial and residential developments".



Scale 1:250 - Lengths are in Metres.



gassman  
development  
perspectives

est 1985

planning | environment | landscape | engineering | survey

T: 3807 3333 | F: 3287 5461 | www.gassman.com.au

LOGAN & Logan | 76 Business Street, Yatala QLD | PO Box 392, Beenleigh 4207

Client	AVJENNINGS Pty Ltd
Project	<b>DISCLOSURE PLAN</b> <b>LOT 2175</b> (Survey plan: SP280869) <b>RIVERTON</b> <b>Cusack Lane, Jimboomba</b>

Locality	JIMBOOMBA	Issue Date	16/03/2022
Local Govt	LOGAN CITY COUNCIL	Meridian	SP280865
Scale (on A4 original)	1:250	Level Datum	AHD
		Contour Interval	0.2 m Design 0.5m Existing
		Drawn	S.Chowdhury
		Date Drafted	20/08/2021
		Checked	A.Geraghty

**Real Property Description:**  
Lot 701 on SP280865

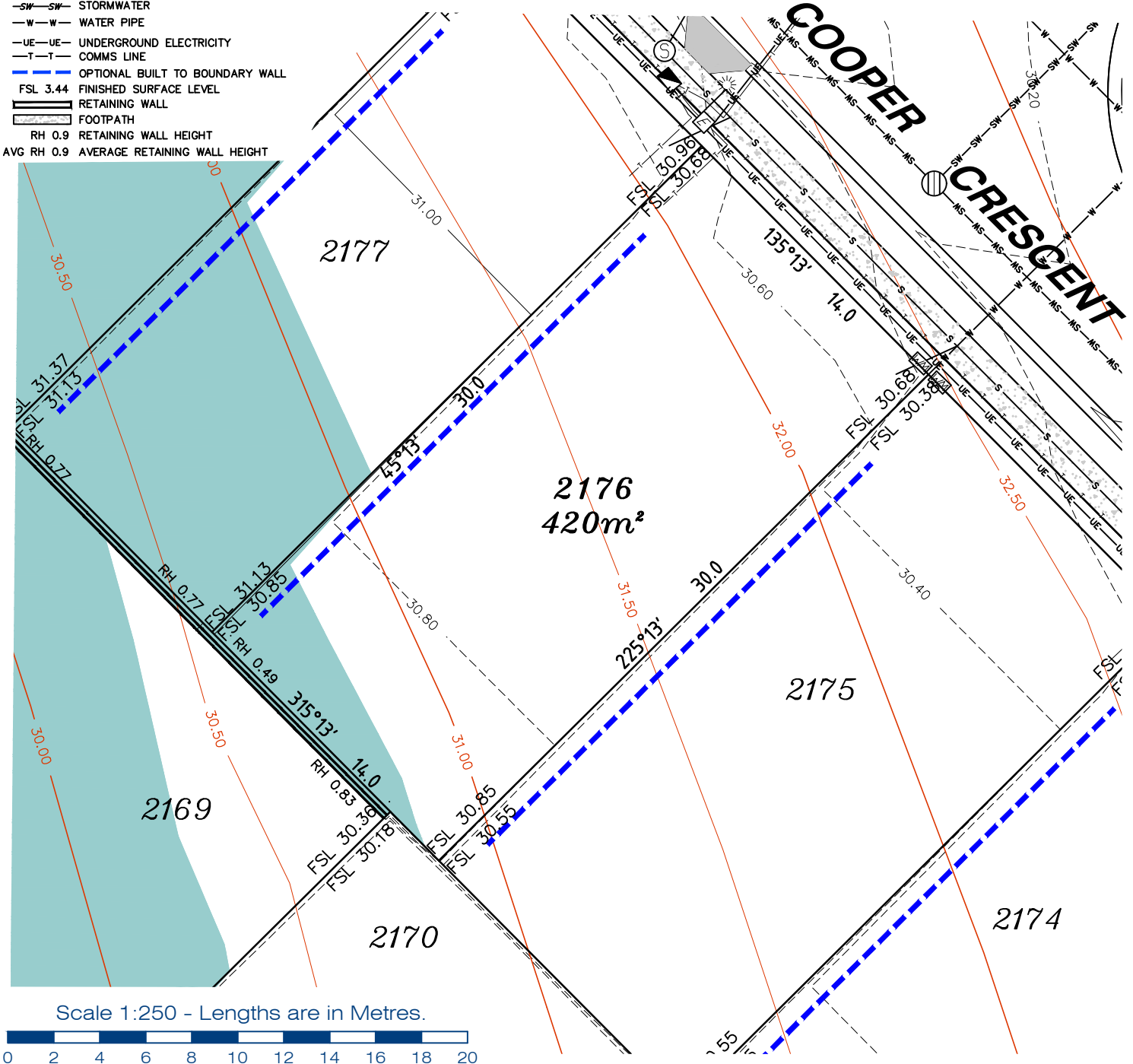
REFERENCE No. **5544-2C**  
PLAN No. **5544 S DC LOT 2175A**

**LEGEND**

- . . SEWER MANHOLE
- ⊙ . . SEWER MAINTENANCE SHAFT
- ⊙ . . SEWER RODDING END
- ⊙ . . STORMWATER MANHOLE
- ⊙ . . GULLY TRAP
- ⊙ . . WATER METER
- ⊙ . . FIRE HYDRANT
- ⊙ . . STOP VALVE
- ⊙ . . ELECTRICITY PILLAR
- ⊙ . . COMMS PIT
- ⊙ . . RING MAIN UNIT
- ⊙ . . LIGHT POLE
- . . DESIGN CONTOURS
- . . EXISTING SURFACE CONTOURS
- . . DESIGN FILL
- . . SEWERAGE
- . . STORMWATER
- . . WATER PIPE
- . . UNDERGROUND ELECTRICITY
- . . COMMS LINE
- . . OPTIONAL BUILT TO BOUNDARY WALL
- . . FSL 3.44 FINISHED SURFACE LEVEL
- . . RETAINING WALL
- . . FOOTPATH
- RH 0.9 . . RETAINING WALL HEIGHT
- AVG RH 0.9 . . AVERAGE RETAINING WALL HEIGHT

**Notes:**

- Final areas are subject to design changes, Council approval and field survey and may differ from those shown on this Disclosure Plan.
- Final presentation of areas will comply with requirements of the Registrar of Titles and may vary from the format on this Disclosure Plan
- "The Seller is entitled to make a Permitted Variation (as defined in Special Condition 3 of the contract) to the lot including its location, area, size, dimensions and elevation".
- Design contours are approximate only and may change during construction
- Services have been plotted from design information only and may change during construction
- All earthworks fill to lots has been placed and compacted on Level 1 basis in accordance with Australian Standard AS3798-2007 "Guidelines on earthworks for commercial and residential developments".



**gassman  
development  
perspectives**

est 1985

planning | environment | landscape | engineering | survey

T: 3807 3333 | F: 3287 5461 | www.gassman.com.au

LOGAN & Logan | 176 Business Street, Yatala QLD | PO Box 392, Beenleigh 4207

Client	<b>AVJENNINGS Pty Ltd</b>
Project	<b>DISCLOSURE PLAN</b> <b>LOT 2176</b> (Survey plan: SP280869) <b>RIVERTON</b> <b>Cusack Lane, Jimboomba</b>
Real Property Description:	Lot 701 on SP280865

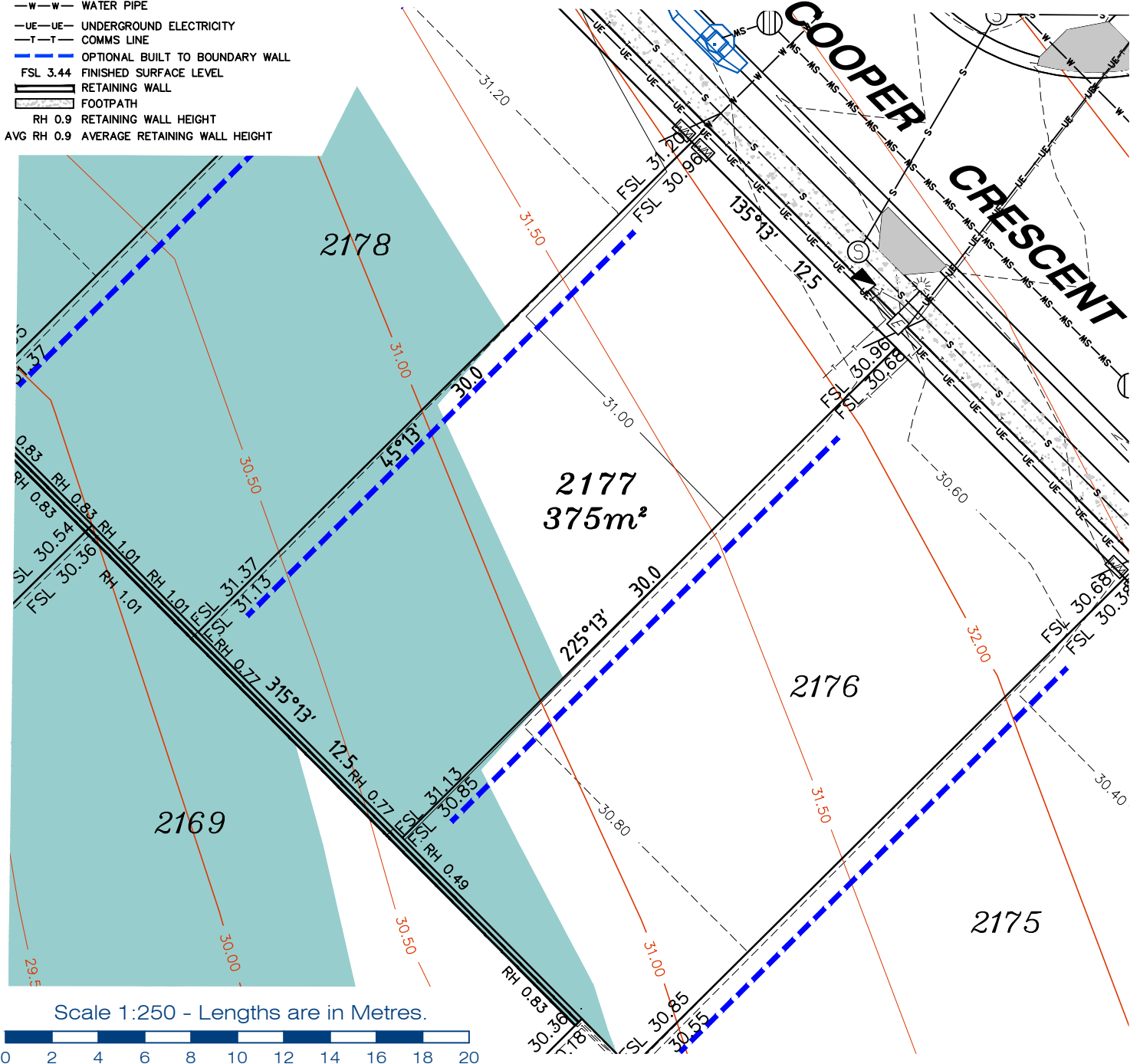
Locality	JIMBOOMBA	Issue Date	16/03/2022
Local Govt	LOGAN CITY COUNCIL	Meridian	SP280865
Scale (on A4 original)	1:250	Level Datum	AHD
		Contour Interval	0.2 m Design 0.5m Existing
		Drawn	S.Chowdhury
		Date Drafted	20/08/2021
		Checked	A.Geraghty
REFERENCE No.	<b>5544-2C</b>		
PLAN No.	<b>5544 S DC LOT 2176A</b>		

**LEGEND**

- ⊙ . . . SEWER MANHOLE
- ⊙ . . . SEWER MAINTENANCE SHAFT
- ⊙ . . . SEWER RODDING END
- ⊙ . . . STORMWATER MANHOLE
- ⊙ . . . GULLY TRAP
- ⊙ . . . WATER METER
- ⊙ . . . FIRE HYDRANT
- ⊙ . . . STOP VALVE
- ⊙ . . . ELECTRICITY PILLAR
- ⊙ . . . COMMS PIT
- ⊙ . . . RING MAIN UNIT
- ⊙ . . . LIGHT POLE
- — — DESIGN CONTOURS
- — — EXISTING SURFACE CONTOURS
- █ DESIGN FILL
- S—S SEWERAGE
- SW—SW STORMWATER
- W—W WATER PIPE
- UE—UE UNDERGROUND ELECTRICITY
- T—T COMMS LINE
- — — OPTIONAL BUILT TO BOUNDARY WALL
- — — FSL 3.44 FINISHED SURFACE LEVEL
- ▬▬▬ RETAINING WALL
- ▬▬▬ FOOTPATH
- RH 0.9 RETAINING WALL HEIGHT
- AVG RH 0.9 AVERAGE RETAINING WALL HEIGHT

**Notes:**

- Final areas are subject to design changes, Council approval and field survey and may differ from those shown on this Disclosure Plan.
- Final presentation of areas will comply with requirements of the Registrar of Titles and may vary from the format on this Disclosure Plan
- "The Seller is entitled to make a Permitted Variation (as defined in Special Condition 3 of the contract) to the lot including its location, area, size, dimensions and elevation".
- Design contours are approximate only and may change during construction
- Services have been plotted from design information only and may change during construction
- All earthworks fill to lots has been placed and compacted on Level 1 basis in accordance with Australian Standard AS3798-2007 "Guidelines on earthworks for commercial and residential developments".



**gassman development perspectives**  
est 1985

planning | environment | landscape | engineering | survey

T: 3807 3333 | F: 3287 5461 | www.gassman.com.au

LOGAN & Logan | 176 Business Street, Yatala QLD | PO Box 392, Beenleigh 4207

Client	<b>AVJENNINGS Pty Ltd</b>
Project	<b>DISCLOSURE PLAN</b> <b>LOT 2177</b> (Survey plan: SP280869) <b>RIVERTON</b> <b>Cusack Lane, Jimboomba</b>

Locality	JIMBOOMBA	Issue Date	16/03/2022
Local Govt	LOGAN CITY COUNCIL	Meridian	SP280865
Scale (on A4 original)	1:250	Level Datum	AHD
		Contour Interval	0.2 m Design 0.5m Existing
		Drawn	S.Chowdhury
		Date Drafted	20/08/2021
		Checked	A.Geraghty

**Real Property Description:**  
Lot 701 on SP280865

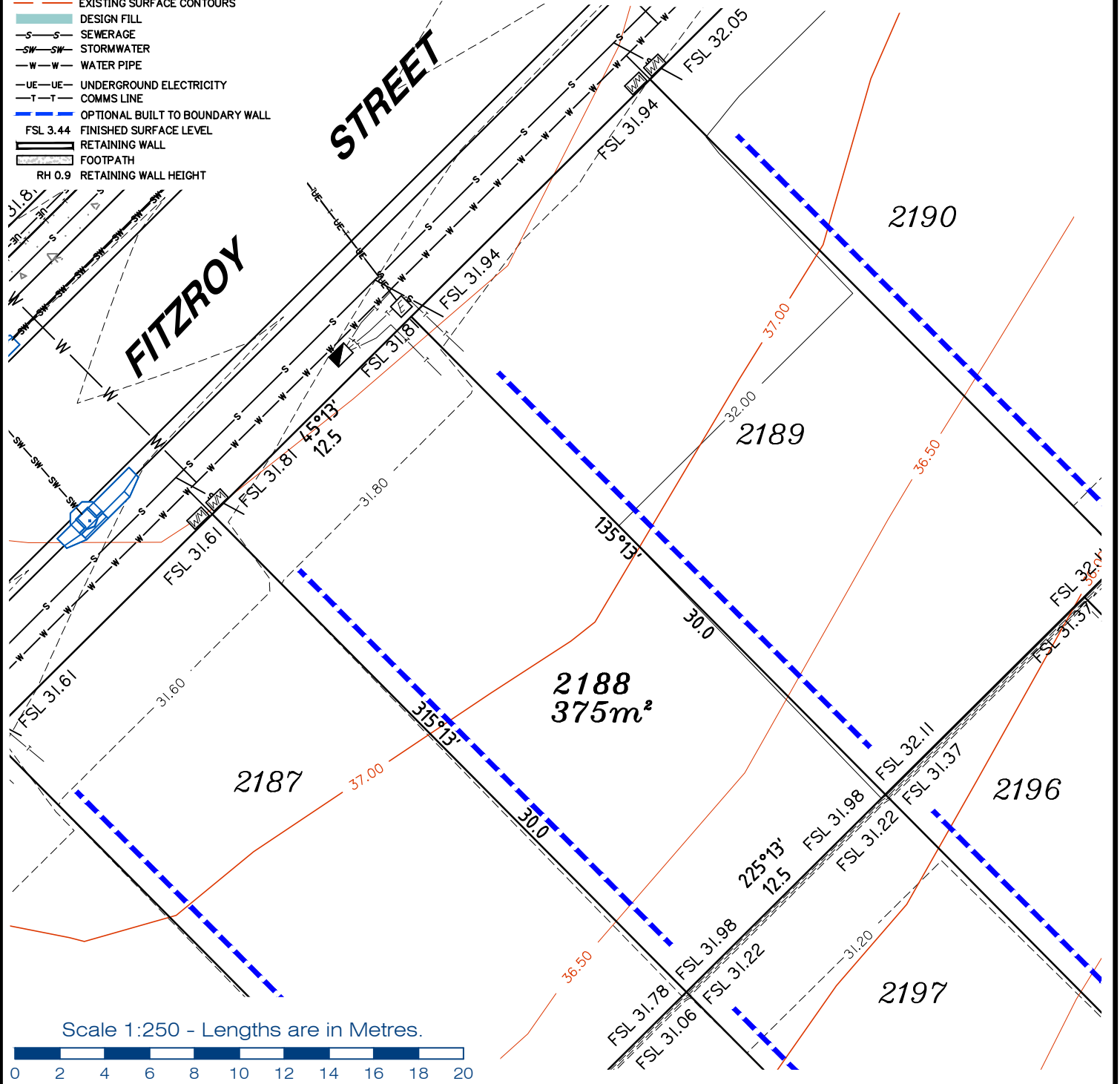
REFERENCE No. **5544-2C**  
PLAN No. **5544 S DC LOT 2177A**

**LEGEND**

- . . . SEWER MANHOLE
- . . . SEWER MAINTENANCE SHAFT
- . . . SEWER RODDING END
- . . . STORMWATER MANHOLE
- . . . GULLY TRAP
- . . . WATER METER
- . . . FIRE HYDRANT
- . . . STOP VALVE
- . . . ELECTRICITY PILLAR
- . . . COMMS PIT
- . . . RING MAIN UNIT
- . . . LIGHT POLE
- . . . DESIGN CONTOURS
- . . . EXISTING SURFACE CONTOURS
- . . . DESIGN FILL
- . . . SEWERAGE
- . . . STORMWATER
- . . . WATER PIPE
- . . . UNDERGROUND ELECTRICITY
- . . . COMMS LINE
- . . . OPTIONAL BUILT TO BOUNDARY WALL
- . . . RETAINING WALL
- . . . FOOTPATH
- . . . RH 0.9 RETAINING WALL HEIGHT

**Notes:**

- Final areas are subject to design changes, Council approval and field survey and may differ from those shown on this Disclosure Plan.
- Final presentation of areas will comply with requirements of the Registrar of Titles and may vary from the format on this Disclosure Plan
- "The Seller is entitled to make a Permitted Variation (as defined in Special Condition 3 of the contract) to the lot including its location, area, size, dimensions and elevation".
- Design contours are approximate only and may change during construction
- Services have been plotted from design information only and may change during construction
- All earthworks fill to lots has been placed and compacted on Level 1 basis in accordance with Australian Standard AS3798-2007 "Guidelines on earthworks for commercial and residential developments".



gassman  
development  
perspectives

est 1985

planning | environment | landscape | engineering | survey

T: 3807 3333 | F: 3287 5461 | www.gassman.com.au

LOGAN & Logan | 76 Business Street, Yatala QLD | PO Box 392, Beenleigh 4207

Client	<b>AVJENNINGS Pty Ltd</b>
Project	<b>DISCLOSURE PLAN</b> <b>LOT 2188</b> (Survey plan: SP280869) <b>RIVERTON</b> <b>Cusack Lane, Jimboomba</b>

Locality	JIMBOOMBA	Issue Date	20/09/2021
Local Govt	LOGAN CITY COUNCIL	Meridian	SP280865
Scale (on A4 original)	1:250	Level Datum	AHD
		Contour Interval	0.2 m Design 0.5m Existing
		Drawn	S.Chowdhury
		Date Drafted	20/08/2021
		Checked	A.Geraghty

**Real Property Description:**  
Lot 701 on SP280865

REFERENCE No. **5544-2C**  
PLAN No. **5544 S DC LOT 2188**