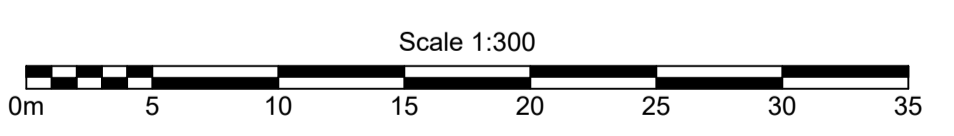


**AS CONSTRUCTED**



BBH Pty Ltd (ACN 010 427 531), hereby certify that the vertical and horizontal locations, and dimensions shown on this plan are a true and correct record of the As Constructed information.

*[Signature]*  
Director  
Cadastral Surveyor

Date 21/09/2020

I, *[Signature]*, hereby certify that the As Constructed information shown on this plan is a true and correct record of sizes, types, materials, classes etc, and it corresponds with the relevant approved Engineering Drawings.

Signed *[Signature]*

RPEQ No. *[Blank]* Date *[Blank]*



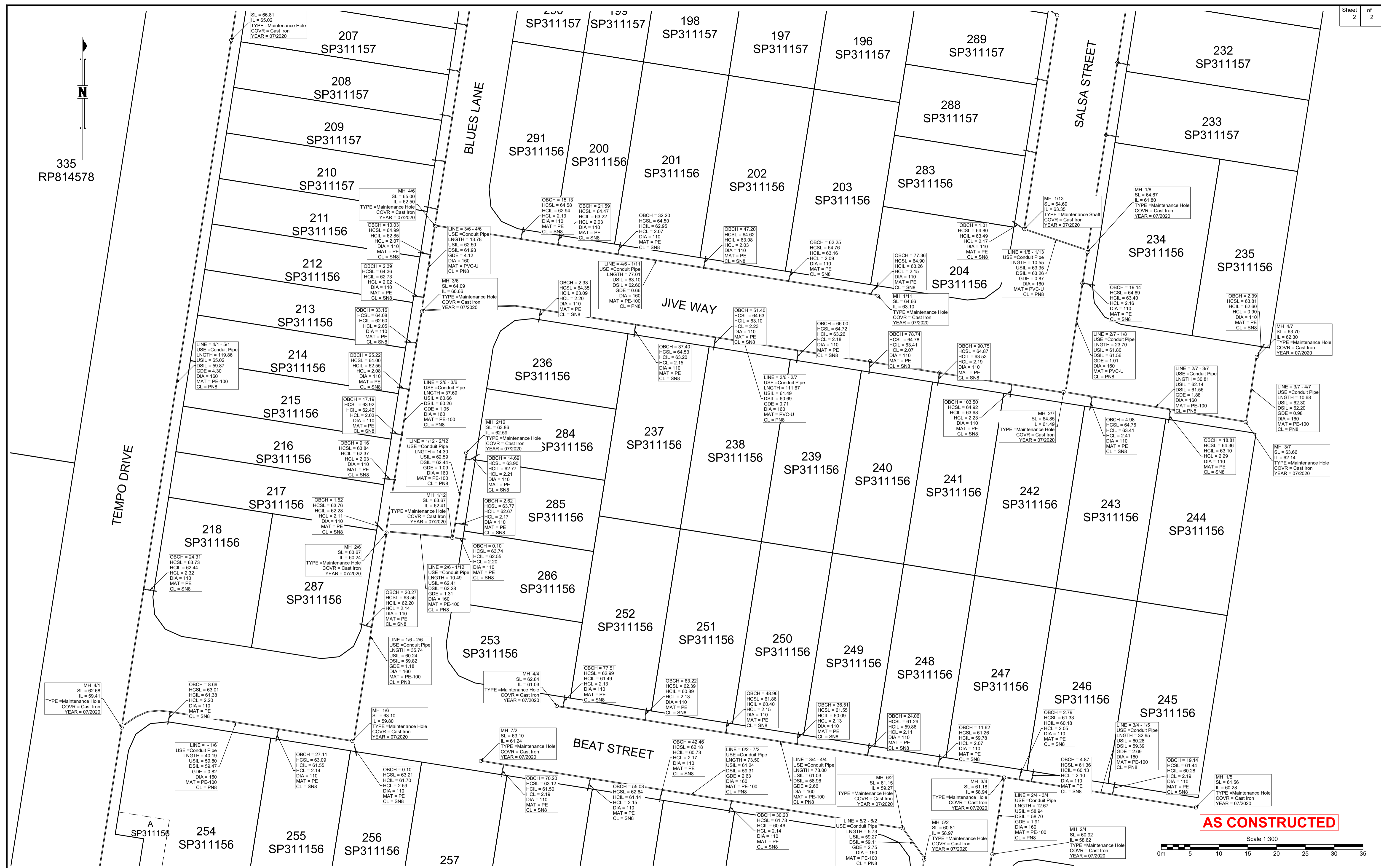
Revisions			
Rev	Description	Date	Initial
A	PRELIMINARY	23/07/2020	MWF
B	FINAL	19/08/2020	MWF

**SEWER - AS CONSTRUCTED**  
CADENCE RIPLEY STAGE 1A  
BINNIES ROAD  
RIPLEY

Client:	AVJennings
Job No:	08070
Authority:	Ipswich City Council
Plan No:	08070_025_ASC.pdf
DWG File:	08070_025_ASC.dwg
Level Origin & Datum:	54.763 AHD
Scale:	1:300 @ A1
Drawn:	MWF
Date:	17/09/20

**BENNETT + BENNETT**

PO Box 5021, GCMC QLD 9726  
Ph: (07) 5631 8000  
mail@bennettandbennett.com.au  
www.bennettandbennett.com.au



BBH Pty Ltd (ACN 010 427 531), hereby certify that the vertical and horizontal locations, and dimensions shown on this plan are a true and correct record of the As Constructed information.

*[Signature]*  
 Director  
 Cadastral Surveyors  
 Date 21/09/2020

I, *[Signature]*, hereby certify that the As Constructed information shown on this plan is a true and correct record of sizes, types, materials, classes etc, and it corresponds with the relevant approved Engineering Drawings.

Signed *[Signature]*  
 RPEQ No. *[Blank]* Date *[Blank]*



Revisions				
Rev	Description	Date	Initial	
A	PRELIMINARY	23/07/2020	MWF	
B	FINAL	19/08/2020	MWF	

**SEWER - AS CONSTRUCTED**  
 CADENCE RIPLEY STAGE 1A  
 BINNIES ROAD  
 RIPLEY

Client:	AV Jennings
Job No:	08070
Authority:	Ipswich City Council
Plan No:	08070_025_ASC.pdf
DWG File:	08070_025_ASC.dwg
Level Origin & Datum:	PSMS130 54.763 AHD
Scale:	1:300 @ A1
Drawn:	MWF
Date:	17/09/20

**BENNETT + BENNETT**

PO Box 5021, GCMC QLD 9726  
 Ph: (07) 5631 8000  
 mail@bennettandbennett.com.au  
 www.bennettandbennett.com.au