



LEGEND

- Approximate Fill Area
- 24 Design Contours

Contours (interval 0.5m) based on the Australian Height Datum (AHD) as shown on engineering plan G18036 provided by Michael Bale & Associates.

- 1.0 ● Denotes depth of fill
- Denote Retaining Wall

- Notes:
1. Drawn to Scale on A3 sheet.
 2. All levels are in metres on Australian Height Datum as determined by PM58130, RL 54.763m AHD.
 3. Contour Interval 0.5m
 4. All dimensions and areas are subject to final survey and approval by ICC.
 5. This plan has been prepared for disclosure under the Land Sales Act 1984.
 6. This plan was prepared for AV Jennings for the purposes of accompanying a sales contract and must not be used for any other purpose.
 7. This plan shows details of Proposed Allotments 200-204, 211-218 & 234-280 on proposal plan 08070_002_PRO Rev O which accompanied the Subdivision Application and was approved by the Ipswich City Council.
 8. Compaction of earth fill will be undertaken as advised by the SCG Urban and in accordance with the requirements of the Australian Standard AS3798-2007-Level 1.
 9. See Sheet 2 for Retaining Wall Heights.

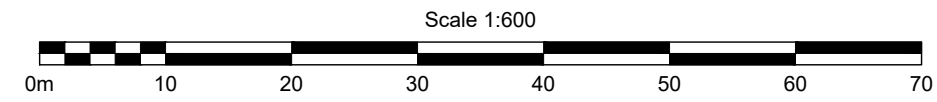
This is a disclosure plan, the final plan may be subject to change. The proposed lots have not been defined on site, and B.B.H. Pty Ltd Cadastral Surveyor accepts no responsibility for any amendments to location, areas, or shape that may occur during the development process. This plan has been prepared for the purpose of identifying the approximate location and size of registrable interests, and has been derived from information supplied by others. Lot dimensions may vary up to 1% and lot areas may vary by up to 2.0%. Contours, depths and retaining wall heights may vary by up to 0.5m. Lengths and shapes of retaining walls may vary during construction. This note is an integral part of this plan and no part of the plan may be reproduced without this note.

F	Plan Amended	BRJ	17/08/2020
E	Lot & Area Amendments	BRJ	11/08/2020
D	Lot Layout Amended	SDS	06/09/2019
C	Plan Amended	JEW	19/06/2019
B	Plan amended	SDS	16/05/2019
A	Original Issue	SDS	20/12/2018
Issue	Revision	Int	Date

Title:
Disclosure Plan for Lots 200-204, 211-218, 234-281, 283-287 & 291
Being part of Lot 349 on S3173 -
(Stage 1A - Cadence Ripley)

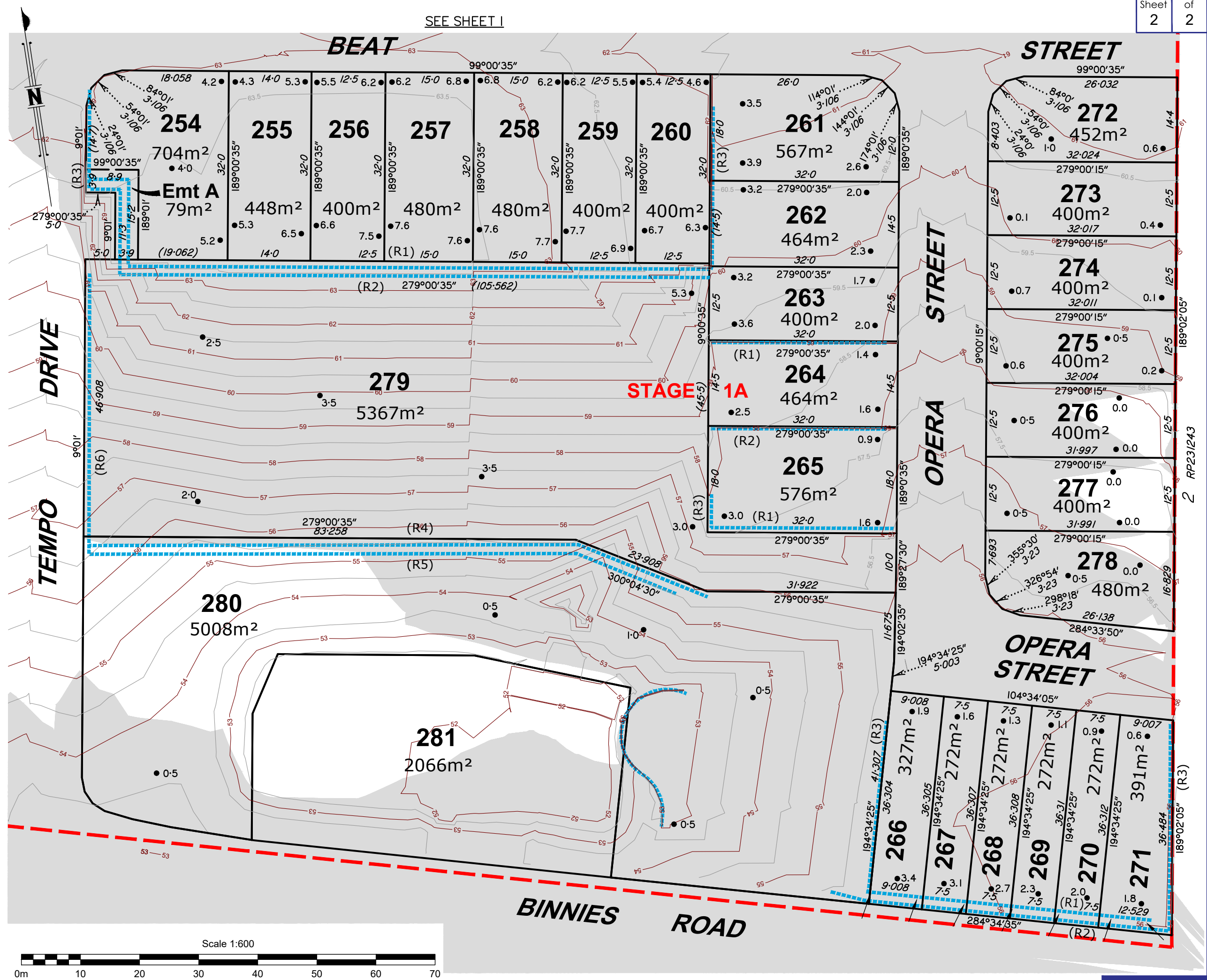
Client:	AV JENNINGS
Locality:	RIPLEY
Local Gov:	ICC Prepared By: SDS
Surveyed By:	MF Approved: JJH
Date Created:	11/12/2018 Scale: 1:1250
Comp File:	08070.Project
Plan No:	08070_008_DIS

SEE SHEET 2



Retaining Wall Heights (St 1A)

LOT	MINIMUM	MAXIMUM	AVERAGE HEIGHT
200 (R1)	1.4	1.5	1.5
200 (R2)	1.4	1.5	1.5
291 (R3)	1.0	1.4	1.2
201 (R1)	1.5	1.5	1.5
201 (R2)	1.5	1.5	1.5
202 (R1)	1.1	1.5	1.3
202 (R2)	1.1	1.5	1.3
203 (R1)	0.4	0.6	0.5
203 (R2)	0.4	0.6	0.5
204 (R1)	0.4	0.6	0.5
204 (R2)	0.4	0.6	0.5
204 (R3)	0.5	0.5	0.5
235	0.3	0.3	0.3
237 (R1)	0.8	0.9	0.8
237 (R2)	0.8	0.9	0.8
237 (R3)	0.5	0.9	0.7
238 (R1)	1.3	1.4	1.4
238 (R2)	1.3	1.4	1.4
239 (R1)	1.3	1.4	1.3
239 (R2)	1.3	1.4	1.3
240 (R1)	1.4	1.5	1.4
240 (R2)	1.4	1.5	1.4
241 (R1)	1.5	1.5	1.5
241 (R2)	1.5	1.5	1.5
242 (R1)	1.5	1.5	1.5
242 (R2)	1.5	1.5	1.5
243 (R1)	1.5	1.5	1.5
243 (R2)	1.5	1.5	1.5
244 (R1)	1.4	1.5	1.4
244 (R2)	1.4	1.5	1.4
244 (R3)	1.5	1.5	1.5
245 (R1)	1.4	1.5	1.4
245 (R2)	1.4	1.5	1.4
246 (R1)	1.5	1.5	1.5
246 (R2)	1.5	1.5	1.5
247 (R1)	1.5	1.5	1.5
247 (R2)	1.5	1.5	1.5
248 (R1)	1.5	1.5	1.5
248 (R2)	1.5	1.5	1.5
249 (R1)	1.4	1.5	1.4
249 (R2)	1.4	1.5	1.4
250 (R1)	1.3	1.4	1.3
250 (R2)	1.3	1.4	1.3
251 (R1)	1.3	1.4	1.4
251 (R2)	1.3	1.4	1.4
252 (R1)	0.8	0.9	0.8
252 (R2)	0.8	0.9	0.8
253 (R1)	0.9	1.1	1.0
254 (R1)	1.0	31.9	16.4
254 (R2)	1.0	1.2	1.1
254 (R3)	1.6	1.3	1.5
255 (R1)	31.9	31.9	31.9
255 (R2)	1.2	1.3	1.3
256 (R1)	31.9	31.9	31.9
256 (R2)	1.3	1.4	1.4
257 (R1)	31.9	31.9	31.9
257 (R2)	1.4	1.4	1.4
258 (R1)	31.6	31.6	31.6
258 (R2)	1.2	1.2	1.2
259 (R1)	31.4	31.3	31.4
259 (R2)	1.0	1.0	1.0
260 (R1)	31.1	31.2	31.1
260 (R2)	0.8	0.9	0.9
260 (R3)	0.8	1.8	1.3
261 (R3)	0.8	1.1	0.9
262 (R3)	1.7	1.8	1.8
263 (R1)	0.8	0.8	0.8
264 (R1)	0.8	0.8	0.8
264 (R2)	0.8	0.8	0.8
265 (R1)	0.2	0.5	0.4
265 (R2)	0.8	0.8	0.8
266 (R1)	1.0	1.0	1.0
266 (R2)	1.0	1.0	1.0
266 (R3)	1.0	1.2	1.1
267 (R1)	1.0	1.0	1.0
267 (R2)	1.0	1.0	1.0
268 (R1)	1.0	1.0	1.0
268 (R2)	1.0	1.0	1.0
269 (R1)	1.0	1.0	1.0
269 (R2)	1.0	1.0	1.0
270 (R1)	1.0	1.0	1.0
270 (R2)	1.0	1.0	1.0
271 (R1)	1.0	1.0	1.0
271 (R2)	1.0	1.0	1.0
271 (R3)	1.0	1.2	1.1
284 (R3)	0.5	0.7	0.6
285 (R3)	0.7	0.9	0.8
291 (R1)	1.4	1.5	1.5
291 (R2)	1.4	1.5	1.5



2 RP231243