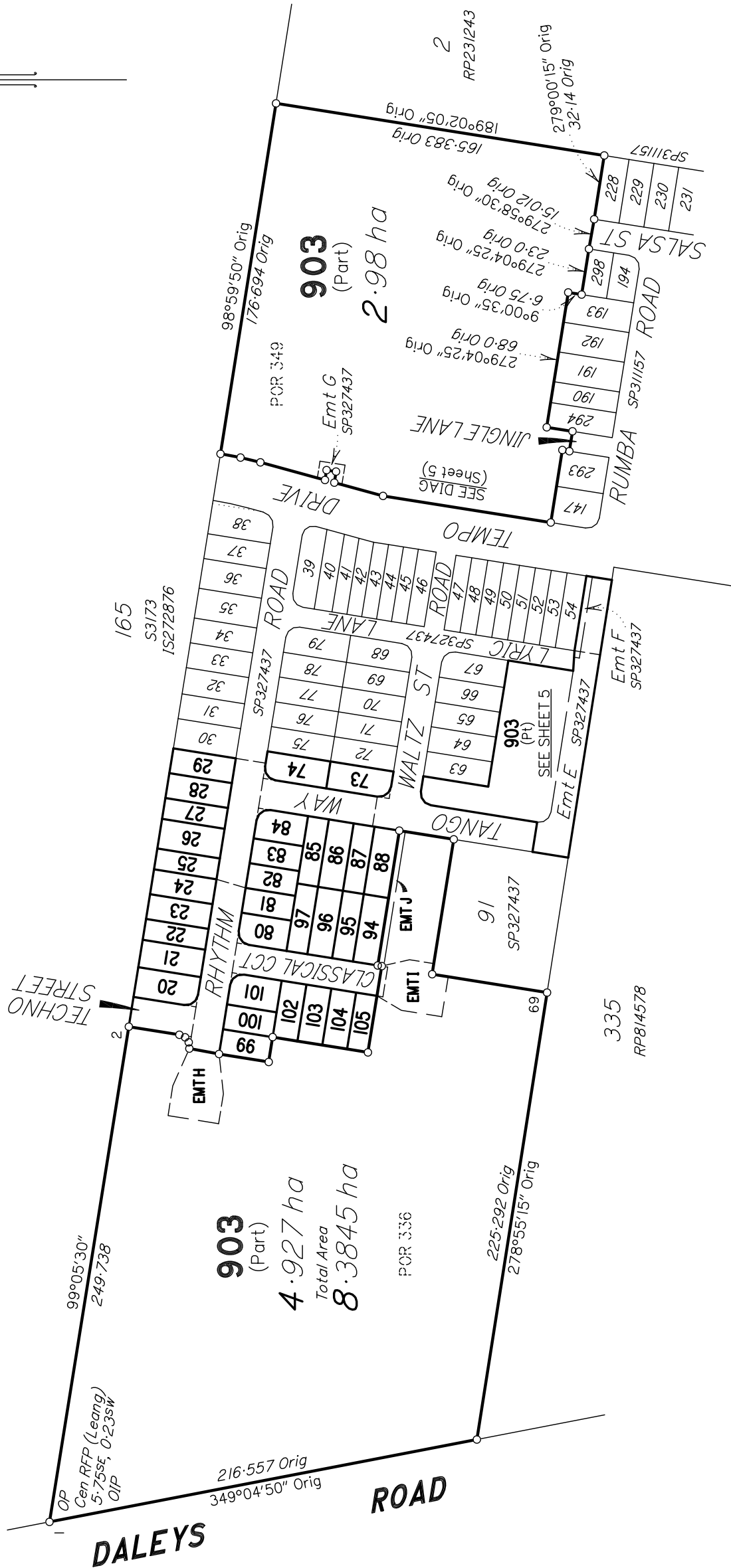


REFERENCE MARKS

STN	TO	ORIGIN	BEARING	DIST
1	OIP	23/1S272876	183°38'10"	4.818

**Total Area of New Road**  
**4682 m<sup>2</sup>**

For details of lots 20-24, 80, 81, 94-97 & 99-105, See Sheet 3.  
For details of lots 25-29, 73, 74 & 82-88, See Sheet 4.

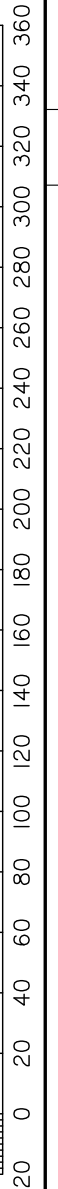


REINSTATEMENT REPORT  
The boundaries have been reinstated from original marks and deed dimensions from original plan SP327437.

M.G.A. COORDINATES GDA-94

STN	EASTING	NORTHING	ZONE	P.U.	LINEAGE	METHOD	REMARKS
2	477 384.328	6 939 687.82	56	0.035	Derived	Network RTK	Peg
5	477 522.85	6 939 665.652	56	0.035	Derived	Network RTK	OP
55	477 481.903	6 939 553.257	56	0.035	Derived	Network RTK	Peg
72	477 371.532	6 939 568.895	56	0.035	Derived	Network RTK	Peg

Scale 1:2500 - Lengths are in Metres.



Original information compiled from SP327437 in the Department of Resources.  
Peg placed at all new corners, unless otherwise stated.

NORRIS CLARKE & O'BRIEN PTY LTD ACN 056 870 770 hereby certify that the land comprised in this plan was surveyed by the corporation, by Dale John BEARDMORE, Surveying Associate, for whose work the corporation accepts responsibility, under the supervision of Christopher Aaron KLIBBE, Cadastral Surveyor, and that the plan is accurate, that the said survey was performed in accordance with the Survey and Mapping Infrastructure Act 2003 and Surveyors Act 2003 and associated Regulations and Standards and that the said survey was completed on \_\_\_/\_\_\_/2021.

Director  
Draft  
29/04/2021  
Director  
Date

0 50mm 100mm 150mm State copyright reserved.

**Plan of LOTS 20 to 29, 73, 74, 80 to 88, 94 to 97, 99 to 105, 903 and EASEMENTS H to J in LOT 903**

Cancelling LOT 902 on SP327437

LOCAL GOVERNMENT: IPSWICH CITY COUNCIL LOCALITY: RIPLEY

Meridian: MGA (Zone 56) vide CORS

Survey Records: No

Scale: 1:2500

Format: STANDARD

**SP327438**

**WARNING : Folded or Mutilated Plans will not be accepted.**  
Plans may be rolled.  
Information may not be placed in the outer margins.

(Dealing No.)

4. Lodged by

(Include address, phone number, email, reference, and Lodger Code)

I. Existing		Created		
Title Reference	Description	New Lots	Road	Secondary Interests
.	Lot 902 on SP327437	20-29, 73, 74, 80-88, 94-97, 99-105 & 903	New Rd	Emts H-J

**MORTGAGE ALLOCATIONS**

Mortgage	Lots Fully Encumbered	Lots Partially Encumbered
718923753	20-29, 73, 74, 80-88, 94-97, 99-105 & 903	-

**ENCUMBRANCE EASEMENT ALLOCATIONS**

Easement	Lots to be Encumbered
. (Emt E on SP327437)	903
. (Emt F on SP327437)	903
. (Emt G on SP327437)	903

*EASEMENT No. \_\_\_\_\_ (Easement D on SP327437) IS TO BE SURRENDERED PRIOR TO THE REGISTRATION OF THIS PLAN.*

*Draft  
29/04/2021*

20-29, 73, 74, 80-88, 94-97 & 99-105 903	Por 336 Pors 336 & 349
Lots	Orig

2. Orig Grant Allocation :

3. References :  
Dept File :  
Local Govt :  
Surveyor : I0935sp\_S2B

5. Passed & Endorsed :

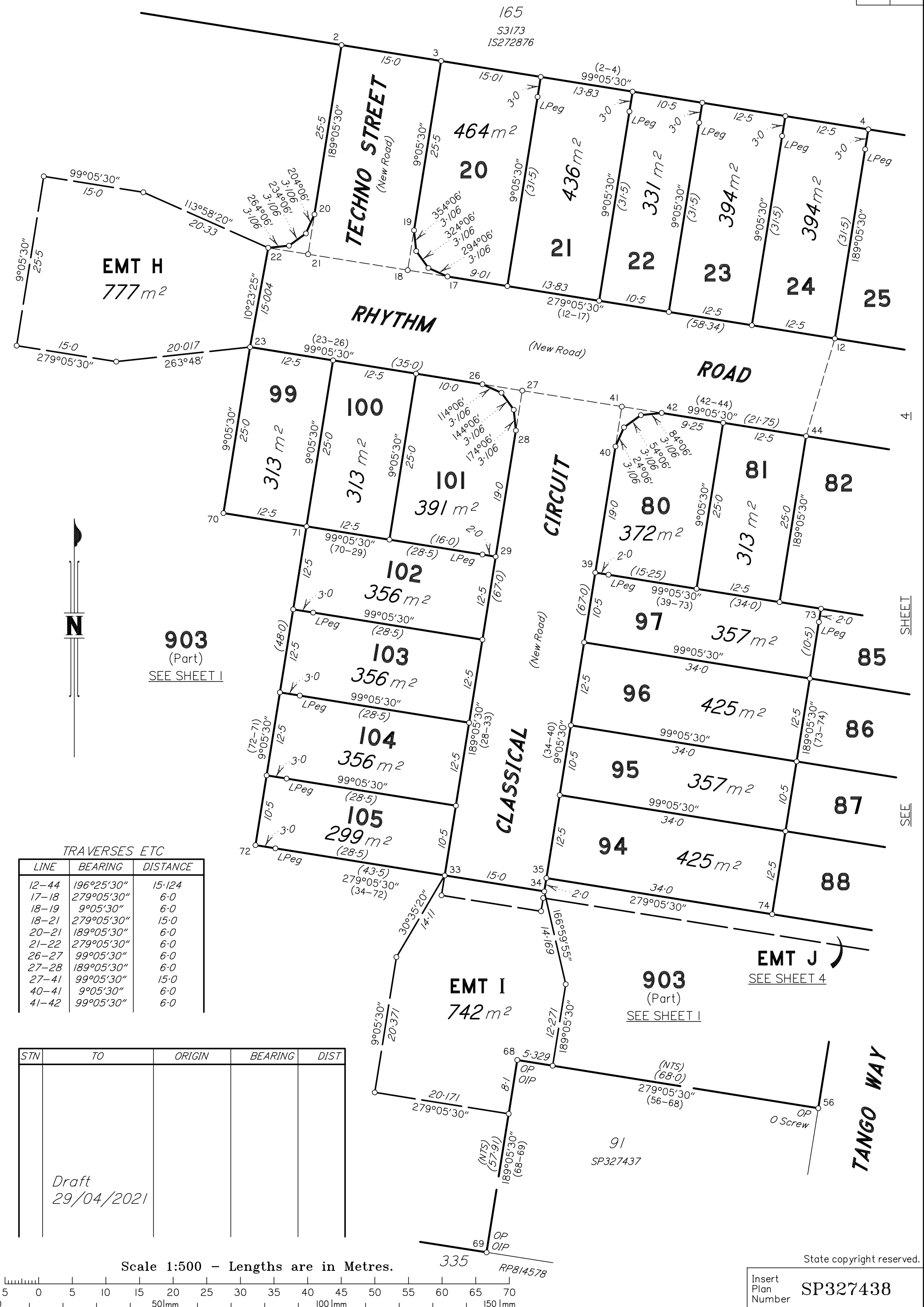
By: NORRIS CLARKE & O'BRIEN PTY LTD  
Date :  
Signed :  
Designation : Cadastral Surveyor/Director

6. Building Format Plans only.  
I certify that :  
\* As far as it is practical to determine, no part of the building shown on this plan encroaches onto adjoining lots or road;  
\* Part of the building shown on this plan encroaches onto adjoining \* lots and road  
  
.....  
Cadastral Surveyor/Director\* Date  
\*delete words not required

7. Lodgement Fees :

Survey Deposit	\$ .....
Lodgement	\$ .....
.....New Titles	\$ .....
Photocopy	\$ .....
Postage	\$ .....
<b>TOTAL</b>	<b>\$ .....</b>

8. Insert Plan Number **SP327438**



**903**  
(Part)  
SEE SHEET 1

**903**  
(Part)  
SEE SHEET 1

**EMT J**  
SEE SHEET 4

**EMT I**  
742 m<sup>2</sup>

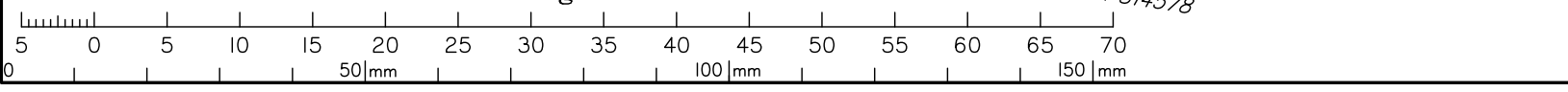
TRAVERSES ETC

LINE	BEARING	DISTANCE
12-44	196°25'30"	15.124
17-18	279°05'30"	6.0
18-19	9°05'30"	6.0
18-21	279°05'30"	15.0
20-21	189°05'30"	6.0
21-22	279°05'30"	6.0
26-27	99°05'30"	6.0
27-28	189°05'30"	6.0
27-41	99°05'30"	15.0
40-41	9°05'30"	6.0
41-42	99°05'30"	6.0

STN	TO	ORIGIN	BEARING	DIST

Draft  
29/04/2021

Scale 1:500 - Lengths are in Metres.



State copyright reserved.

Insert Plan Number **SP327438**

10935sp\_s2B



REFERENCE MARKS

STN	TO	ORIGIN	BEARING	DIST

TRAVERSES ETC

LINE	BEARING	DISTANCE
7-66	189°05'30"	15.0
12-44	196°25'30"	15.124
47-48	99°05'30"	6.0
48-49	189°05'30"	6.0
48-64	99°05'30"	15.0
53-61	99°05'30"	15.0
59-60	279°05'30"	6.0
60-61	9°05'30"	6.0
63-64	9°05'30"	6.0
64-65	99°05'30"	6.0

'x' denotes No O Mk, Peg Pld

Draft  
29/04/2021

CLASSICAL  
CIRCUIT

EMT I

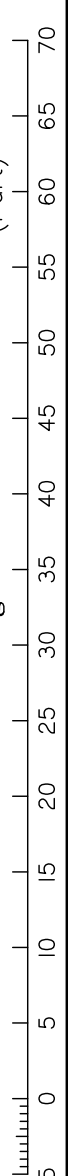
EMT J

249 m<sup>2</sup>

903 (Part)

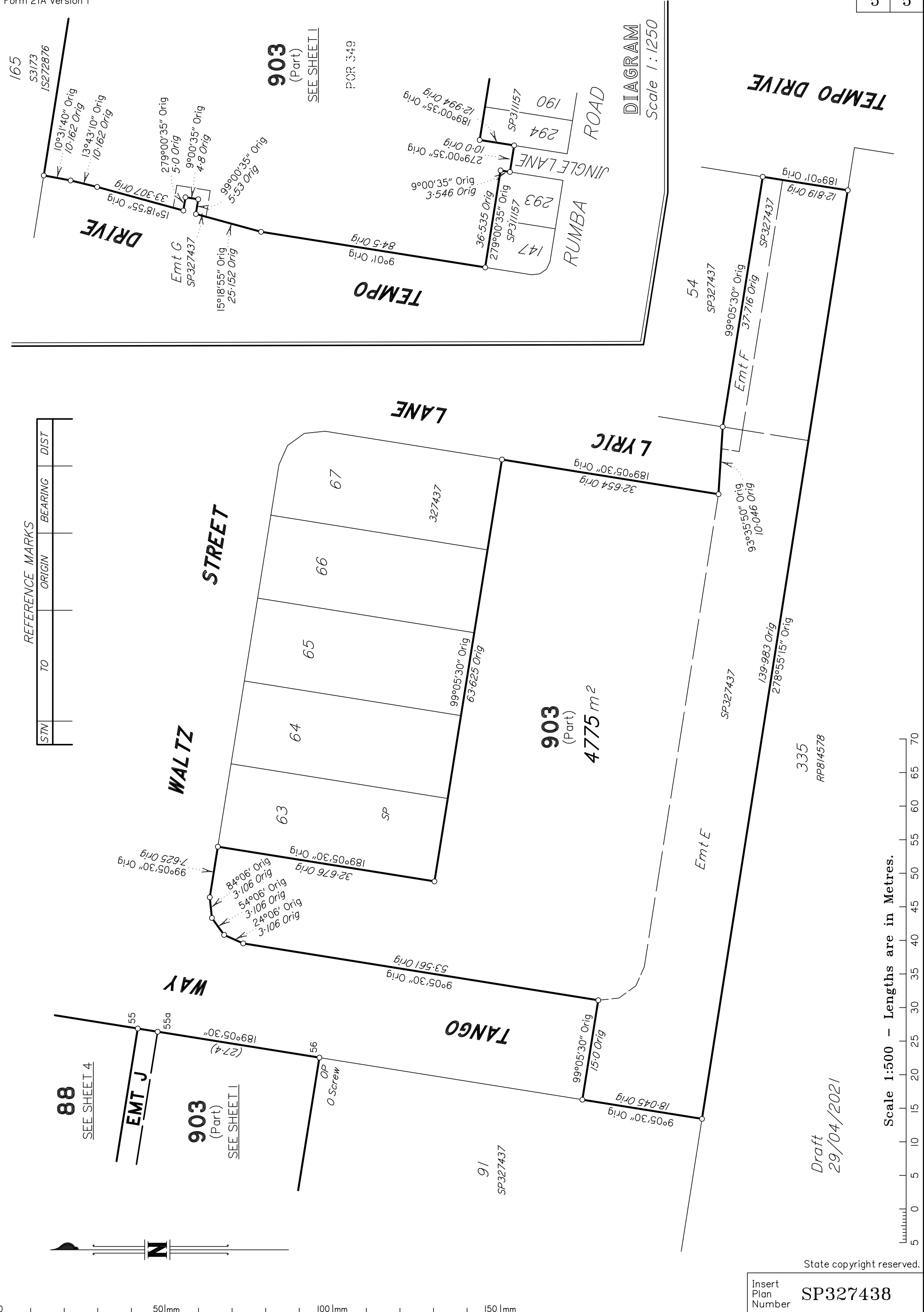
SEE SHEET I

Scale 1:500 - Lengths are in Metres.



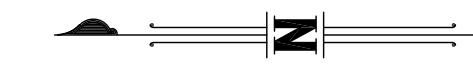
Insert Plan Number SP327438

State copyright reserved.



REFERENCE MARKS

STM	TO	ORIGIN	BEARING	DIST



**88**

SEE SHEET 4

**EMT J**

**903**  
(Part)  
SEE SHEET 1

**91**

OP  
0 Screw

55

55a

189°05'30"

(27.4)

56

9°05'30" Orig

53.561 Orig

84°06' Orig

3-106 Orig

54°06' Orig

3-106 Orig

24°06' Orig

3-106 Orig

99°05'30" Orig

32.676 Orig

189°05'30" Orig

7.625 Orig

99°05'30" Orig

99°05'30" Orig

63.625 Orig

99°05'30" Orig

327437

67

66

65

64

63

SP

903

(Part)

4775 m<sup>2</sup>

327437

67

66

65

64

63

SP

903

(Part)

4775 m<sup>2</sup>

327437

67

66

65

64

63

SP

903

(Part)

4775 m<sup>2</sup>

327437

67

66

65

64

63

SP

903

(Part)

4775 m<sup>2</sup>

327437

67

66

65

64

63

SP

903

(Part)

4775 m<sup>2</sup>

327437

67

66

65

64

63

SP

903

(Part)

4775 m<sup>2</sup>

327437

67

66

65

64

63

SP

903

(Part)

4775 m<sup>2</sup>

327437

67

66

65

64

63

SP

903

(Part)

4775 m<sup>2</sup>

327437

67

66

65

64

63

SP

903

(Part)

4775 m<sup>2</sup>

327437

67

66

65

64

63

SP

903

(Part)

4775 m<sup>2</sup>

327437

67

66

65

64

63

SP

903

(Part)

4775 m<sup>2</sup>

327437

67

66

65

64

63

SP

903

(Part)

4775 m<sup>2</sup>

327437

67

66

65

64

63

SP

903

(Part)

4775 m<sup>2</sup>

327437

67

66

65

64

63

SP

903

(Part)

4775 m<sup>2</sup>

327437

67

66

65

64

63

SP

903

(Part)

4775 m<sup>2</sup>

327437

67

66

65

64

63

SP

903

(Part)

4775 m<sup>2</sup>

327437

67

66

65

64

63

SP

903

(Part)

4775 m<sup>2</sup>

327437

67

66

65

64

63

SP

903

(Part)

4775 m<sup>2</sup>

327437

67

66

65

64

63

SP

903

(Part)

4775 m<sup>2</sup>

327437

67

66

65

64

63

SP

903

(Part)

4775 m<sup>2</sup>

327437

67

66

65

64

63

SP

903

(Part)

4775 m<sup>2</sup>

327437

67

66

65

64

63

SP

903

(Part)

4775 m<sup>2</sup>

327437

67

66

65

64

63

SP

903

(Part)

4775 m<sup>2</sup>

327437

67

66

65

64

63

SP

903

(Part)

4775 m<sup>2</sup>

327437

67

66

65

64

63

SP

903

(Part)

4775 m<sup>2</sup>

327437

67

66

65